

Datasheet for ABIN6259615 anti-WTH3DI antibody



[Go to Product page](#)

1 Image

Overview

Quantity:	100 µL
Target:	WTH3DI
Reactivity:	Human, Mouse, Rat
Host:	Rabbit
Clonality:	Polyclonal
Conjugate:	This WTH3DI antibody is un-conjugated
Application:	ELISA, Western Blotting (WB), Immunocytochemistry (ICC), Immunofluorescence (IF)

Product Details

Immunogen:	A synthesized peptide
Isotype:	IgG
Specificity:	RAB6C Antibody detects endogenous levels of total RAB6C
Cross-Reactivity:	Human, Mouse (Murine), Rat (Rattus)
Purification:	The antiserum was purified by peptide affinity chromatography using SulfoLink™ Coupling Resin (Thermo Fisher Scientific).

Target Details

Target:	WTH3DI
Alternative Name:	RAB6C (WTH3DI Products)
Background:	Description: May be involved in the regulation of centrosome duplication and cell cycle

Target Details

progression.

Gene: RAB6C

Molecular Weight: 28 kDa

Gene ID: 84084

UniProt: [Q9H0N0](#)

Application Details

Application Notes: WB 1:500~1:1000, IF/ICC 1:100-1:500

Restrictions: For Research Use only

Handling

Format: Liquid

Concentration: 1 mg/mL

Buffer: Rabbit IgG in phosphate buffered saline , pH 7.4, 150 mM NaCl, 0.02 % sodium azide and 50 % glycerol.

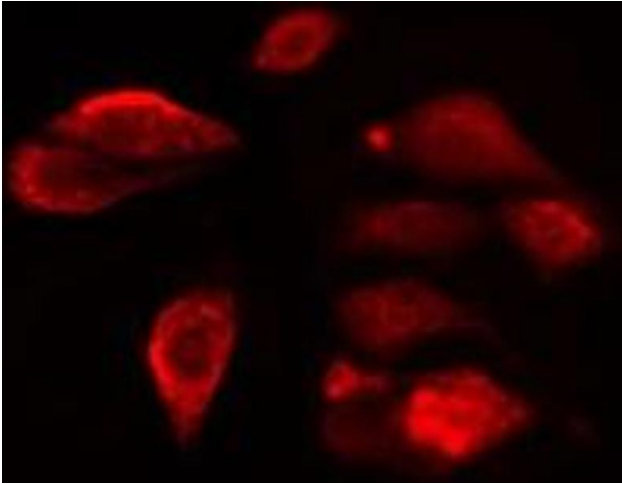
Preservative: Sodium azide

Precaution of Use: This product contains Sodium azide: a POISONOUS AND HAZARDOUS SUBSTANCE which should be handled by trained staff only.

Storage: -20 °C

Storage Comment: Store at -20 °C.Stable for 12 months from date of receipt

Expiry Date: 12 months



Immunofluorescence (fixed cells)

Image 1. ABIN6275472 staining COLO205 cells by IF/ICC.

The sample were fixed with PFA and permeabilized in 0.1% Triton X-100, then blocked in 10% serum for 45 minutes at 25°C. The primary antibody was diluted at 1/200 and incubated with the sample for 1 hour at 37°C. An Alexa Fluor 594 conjugated goat anti-rabbit IgG (H+L) antibody (Cat.# S0006), diluted at 1/600, was used as secondary antibody