



[Go to Product page](#)

Datasheet for ABIN6259700

anti-ABHD3 antibody (Internal Region)

2 Images

Overview

Quantity:	100 µL
Target:	ABHD3
Binding Specificity:	Internal Region
Reactivity:	Human, Mouse
Host:	Rabbit
Clonality:	Polyclonal
Conjugate:	This ABHD3 antibody is un-conjugated
Application:	ELISA, Western Blotting (WB), Immunofluorescence (IF), Immunocytochemistry (ICC)

Product Details

Immunogen:	A synthesized peptide derived from human ABHD3, corresponding to a region within the internal amino acids.
Isotype:	IgG
Specificity:	ABHD3 Antibody detects endogenous levels of total ABHD3.
Predicted Reactivity:	Pig,Zebrafish,Bovine,Horse,Sheep,Dog,Xenopus
Purification:	The antiserum was purified by peptide affinity chromatography using SulfoLink™ Coupling Resin (Thermo Fisher Scientific).

Target Details

Target:	ABHD3
---------	-------

Target Details

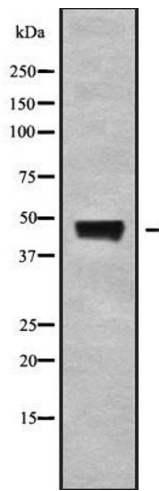
Alternative Name:	ABHD3 (ABHD3 Products)
Background:	<p>Description: Phospholipase that may play a role in phospholipids remodeling. May selectively cleave myristate (C14)-containing phosphatidylcholines through its predominant phospholipase 1 activity, cleaving preferentially acyl groups in sn1 position. In parallel, may have a minor phospholipase 2 activity acting on acyl groups in position sn2. In addition to (C14)-containing phosphatidylcholines, may also act on other medium-chain-containing and oxidatively truncated phospholipids.</p> <p>Gene: ABHD3</p>
Molecular Weight:	46 kDa
Gene ID:	171586
UniProt:	Q8WU67

Application Details

Application Notes:	WB 1:1000-3000, IF/ICC 1:100-1:500, ELISA(peptide) 1:20000-1:40000
Restrictions:	For Research Use only

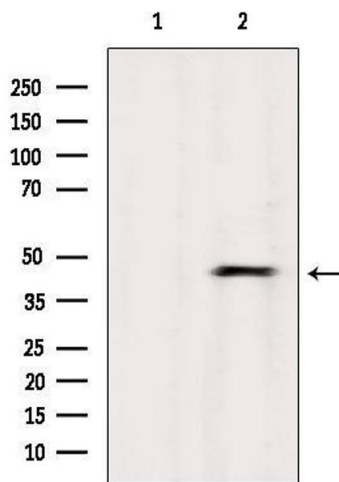
Handling

Format:	Liquid
Concentration:	1 mg/mL
Buffer:	Rabbit IgG in phosphate buffered saline , pH 7.4, 150 mM NaCl, 0.02 % sodium azide and 50 % glycerol.
Preservative:	Sodium azide
Precaution of Use:	This product contains Sodium azide: a POISONOUS AND HAZARDOUS SUBSTANCE which should be handled by trained staff only.
Storage:	-20 °C
Storage Comment:	Store at -20 °C. Stable for 12 months from date of receipt.
Expiry Date:	12 months



Western Blotting

Image 1. Western blot analysis of ABHD3 using K562 whole cell lysates



Western Blotting

Image 2. Western blot analysis of extracts from Mouse brain, using ABHD3 Antibody. Lane 1 was treated with the blocking peptide.