

Datasheet for ABIN6259707  
**anti-ABO antibody (N-Term)**

## 3 Images

[Go to Product page](#)

## Overview

|                      |  |
|----------------------|--|
| Quantity:            | 100 µL   |
| Target:              | ABO  |
| Binding Specificity: | N-Term   |
| Reactivity:          | Human, Mouse, Rat  |
| Host:                | Rabbit   |
| Clonality:           | Polyclonal   |
| Conjugate:           | This ABO antibody is un-conjugated   |
| Application:         | ELISA, Western Blotting (WB), Immunohistochemistry (IHC), Immunofluorescence (IF), Immunocytochemistry (ICC) |

## Product Details

|               |   |
|---------------|---|
| Immunogen:    | A synthesized peptide derived from human ABO, corresponding to a region within N-terminal amino acids.                    |
| Isotype:      | IgG   |
| Specificity:  | ABO Antibody detects endogenous levels of total ABO.  |
| Purification: | The antiserum was purified by peptide affinity chromatography using SulfoLink™ Coupling Resin (Thermo Fisher Scientific). |

## Target Details

|                   |                                      |
|-------------------|--------------------------------------|
| Target:           | ABO                                  |
| Alternative Name: | ABO ( <a href="#">ABO Products</a> ) |

## Target Details

|             |  |
|-------------|--|
| Background: | Description: This protein is the basis of the ABO blood group system. The histo-blood group ABO involves three carbohydrate antigens: A, B, and H. A, B, and AB individuals express a glycosyltransferase activity that converts the H antigen to the A antigen (by addition of UDP-GalNAc) or to the B antigen (by addition of UDP-Gal), whereas O individuals lack such activity.<br>Gene: ABO |
|-------------|--|

|                   |       |
|-------------------|-------|
| Molecular Weight: | 40kDa |
|-------------------|-------|

|          |    |
|----------|----|
| Gene ID: | 28 |
|----------|----|

|          |                        |
|----------|------------------------|
| UniProt: | <a href="#">P16442</a> |
|----------|------------------------|

## Application Details

|                    |   |
|--------------------|---|
| Application Notes: | WB 1:500-1:2000, IHC 1:50-1:200, IF/ICC 1:100-1:500, ELISA(peptide) 1:20000-1:40000 |
|--------------------|---|

|               |                       |
|---------------|-----------------------|
| Restrictions: | For Research Use only |
|---------------|-----------------------|

## Handling

|         |        |
|---------|--------|
| Format: | Liquid |
|---------|--------|

|                |         |
|----------------|---------|
| Concentration: | 1 mg/mL |
|----------------|---------|

|         |   |
|---------|---|
| Buffer: | Rabbit IgG in phosphate buffered saline , pH 7.4, 150 mM NaCl, 0.02 % sodium azide and 50 % glycerol. |
|---------|---|

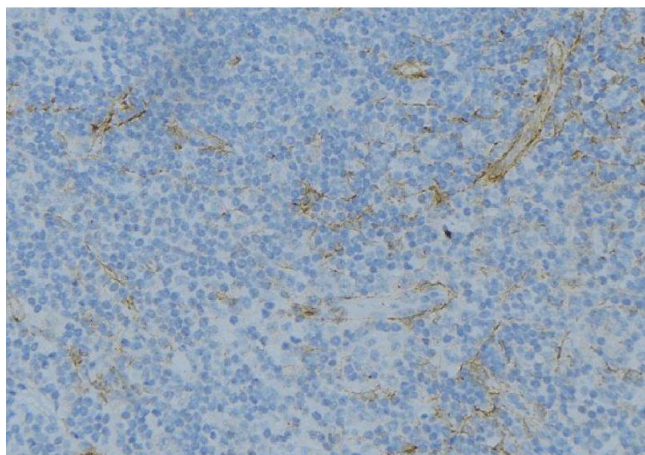
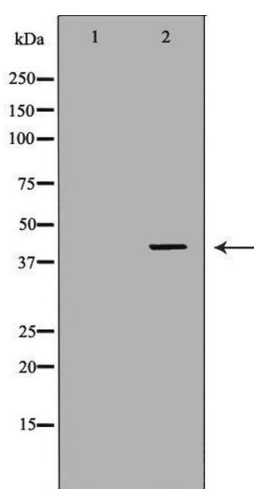
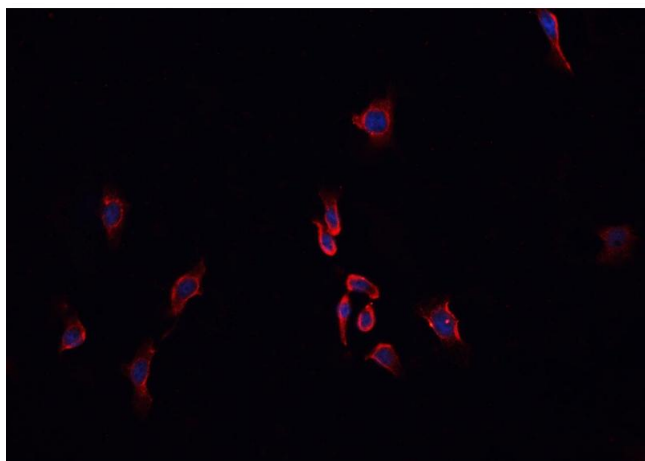
|               |              |
|---------------|--------------|
| Preservative: | Sodium azide |
|---------------|--------------|

|                    |  |
|--------------------|--|
| Precaution of Use: | This product contains Sodium azide: a POISONOUS AND HAZARDOUS SUBSTANCE which should be handled by trained staff only. |
|--------------------|--|

|          |        |
|----------|--------|
| Storage: | -20 °C |
|----------|--------|

|                  |   |
|------------------|---|
| Storage Comment: | Store at -20 °C. Stable for 12 months from date of receipt. |
|------------------|---|

|              |           |
|--------------|-----------|
| Expiry Date: | 12 months |
|--------------|-----------|



### Immunofluorescence (fixed cells)

**Image 1.** ABIN6276744 staining HepG2<sup>®</sup> cells by IF/ICC. The sample were fixed with PFA and permeabilized in 0.1% Triton X-100, then blocked in 10% serum for 45 minutes at 25°C. The primary antibody was diluted at 1/200 and incubated with the sample for 1 hour at 37°C. An Alexa Fluor 594 conjugated goat anti-rabbit IgG (H+L) antibody (Cat.# S0006), diluted at 1/600, was used as secondary antibody

### Western Blotting

**Image 2.** Western blot analysis of extracts of K562, using ABO antibody. The lane on the left is treated with the antigen-specific peptide.

### Immunohistochemistry

**Image 3.** ABIN6276744 at 1/100 staining Human lymph node tissue by IHC-P. The sample was formaldehyde fixed and a heat mediated antigen retrieval step in citrate buffer was performed. The sample was then blocked and incubated with the antibody for 1.5 hours at 22°C. An HRP conjugated goat anti-rabbit antibody was used as the secondary