

Datasheet for ABIN6259721

anti-Acetyl-CoA Carboxylase alpha antibody (N-Term)

4 Images

[Go to Product page](#)

Overview

Quantity:	100 µL
Target:	Acetyl-CoA Carboxylase alpha (ACACA)
Binding Specificity:	N-Term
Reactivity:	Human, Rat, Mouse
Host:	Rabbit
Clonality:	Polyclonal
Conjugate:	This Acetyl-CoA Carboxylase alpha antibody is un-conjugated
Application:	Western Blotting (WB), ELISA, Immunohistochemistry (IHC), Immunofluorescence (IF), Immunocytochemistry (ICC)

Product Details

Immunogen:	A synthesized peptide derived from human ACC1, corresponding to a region within N-terminal amino acids.
Isotype:	IgG
Specificity:	ACC1 Antibody detects endogenous levels of total ACC1.
Predicted Reactivity:	Pig,Zebrafish,Bovine,Horse,Sheep,Rabbit,Dog,Chicken
Purification:	The antiserum was purified by peptide affinity chromatography using SulfoLink™ Coupling Resin (Thermo Fisher Scientific).

Target Details

Target:	Acetyl-CoA Carboxylase alpha (ACACA)
---------	--------------------------------------

Target Details

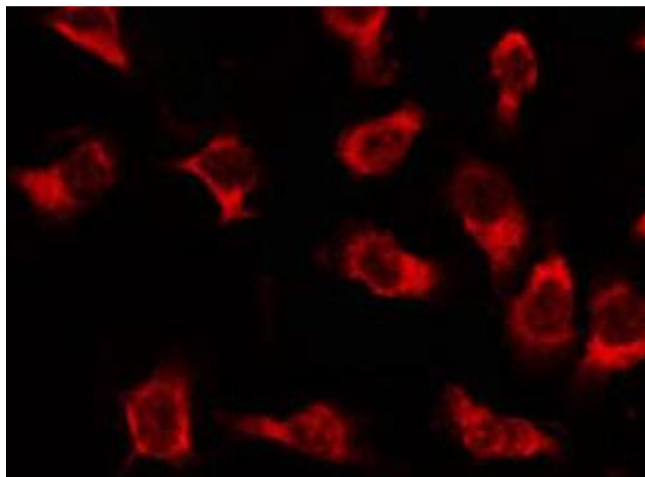
Alternative Name:	ACACA (ACACA Products)
Background:	Description: Catalyzes the rate-limiting reaction in the biogenesis of long-chain fatty acids. Carries out three functions: biotin carboxyl carrier protein, biotin carboxylase and carboxyltransferase. Gene: ACACA
Molecular Weight:	265kDa
Gene ID:	31
UniProt:	Q13085
Pathways:	AMPK Signaling , Ribonucleoside Biosynthetic Process , Warburg Effect

Application Details

Application Notes:	WB 1:500-1:2000, IHC 1:50-1:200, IF/ICC 1:100-1:500, ELISA(peptide) 1:20000-1:40000
Restrictions:	For Research Use only

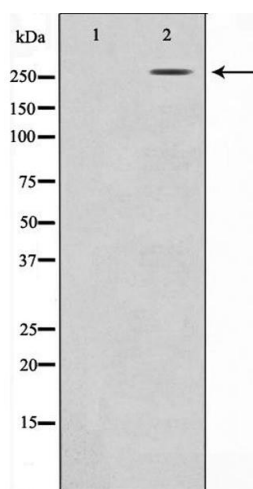
Handling

Format:	Liquid
Concentration:	1 mg/mL
Buffer:	Rabbit IgG in phosphate buffered saline , pH 7.4, 150 mM NaCl, 0.02 % sodium azide and 50 % glycerol.
Preservative:	Sodium azide
Precaution of Use:	This product contains Sodium azide: a POISONOUS AND HAZARDOUS SUBSTANCE which should be handled by trained staff only.
Storage:	-20 °C
Storage Comment:	Store at -20 °C. Stable for 12 months from date of receipt.
Expiry Date:	12 months



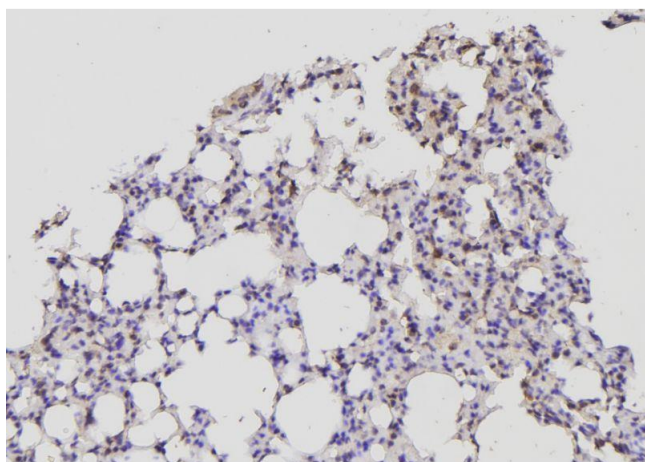
Immunofluorescence (fixed cells)

Image 1. ABIN6269341 staining 293 by IF/ICC. The sample were fixed with PFA and permeabilized in 0.1% Triton X-100, then blocked in 10% serum for 45 minutes at 25°C. The primary antibody was diluted at 1/200 and incubated with the sample for 1 hour at 37°C. An Alexa Fluor 594 conjugated goat anti-rabbit IgG (H+L) Ab, diluted at 1/600, was used as the secondary antibody.



Western Blotting

Image 2. Western blot analysis of ACC1 expression in PMA treated NIH-3T3 whole cell lysates, The lane on the left is treated with the antigen-specific peptide.



Immunohistochemistry

Image 3. ABIN6269341 at 1/100 staining Mouse lung tissue by IHC-P. The sample was formaldehyde fixed and a heat mediated antigen retrieval step in citrate buffer was performed. The sample was then blocked and incubated with the antibody for 1.5 hours at 22°C. An HRP conjugated goat anti-rabbit antibody was used as the secondary.

Please check the [product details page](#) for more images. Overall 4 images are available for ABIN6259721.