



[Go to Product page](#)

Datasheet for ABIN625978

## anti-NLRP13 antibody (N-Term)

### 3 Images

#### Overview

Quantity:	50 µg
Target:	NLRP13
Binding Specificity:	N-Term
Reactivity:	Human
Host:	Rabbit
Clonality:	Polyclonal
Application:	Western Blotting (WB), ELISA, Immunohistochemistry (Paraffin-embedded Sections) (IHC (p)), Immunohistochemistry (IHC)

#### Product Details

Brand:	IHC-plus™
Isotype:	IgG
Purification:	Immunoaffinity purified

#### Target Details

Target:	NLRP13
Alternative Name:	NLRP13 ( <a href="#">NLRP13 Products</a> )
Background:	Name/Gene ID: NLRP13  Synonyms: NLRP13, NALP13, PAN13, CLR19.7, NOD14
Gene ID:	126204

## Target Details

---

UniProt: [Q86W25](#)

Pathways: [Inflammasome](#)

## Application Details

---

Application Notes: Approved: ELISA, IHC, IHC-P (5 µg/mL), WB (1 - 2 µg/mL)

Usage: NALP13 antibody can be used for detection of NALP13 by Western blot at 1-2 µg/mL.

Comment: Target Species of Antibody: Human

Restrictions: For Research Use only

## Handling

---

Format: Liquid

Concentration: Lot specific

Buffer: PBS, 0.02 % sodium azide

Preservative: Sodium azide

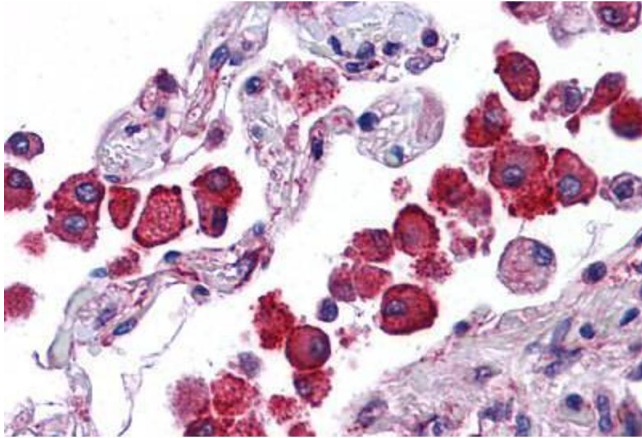
Precaution of Use: This product contains Sodium azide: a POISONOUS AND HAZARDOUS SUBSTANCE which should be handled by trained staff only.

Handling Advice: avoid freeze thaw cycles. Store undiluted.

Storage: 4 °C, -20 °C

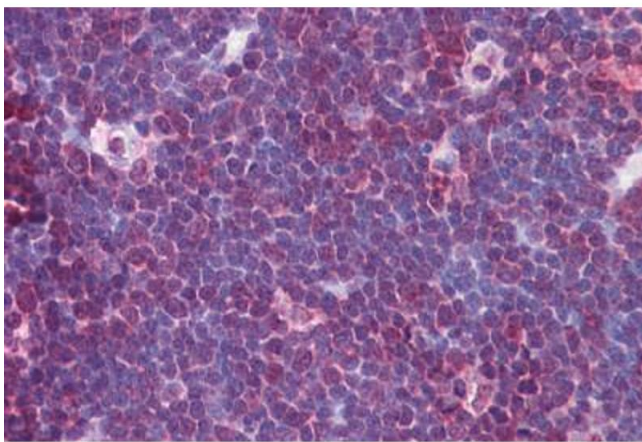
Storage Comment: Store at 4°C for 3 months and -20°C, stable for up to 1 year. Avoid repeated freeze-thaw cycles.

Expiry Date: 12 months



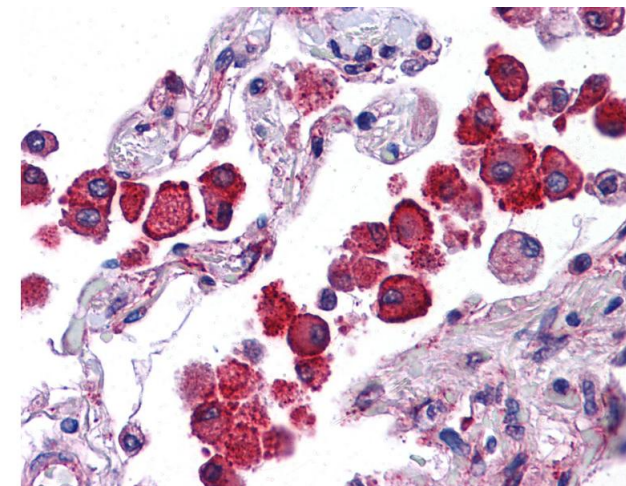
### Immunohistochemistry (Formalin-fixed Paraffin-embedded Sections)

**Image 1.** Human Lung: Formalin-Fixed, Paraffin-Embedded (FFPE)



### Immunohistochemistry (Formalin-fixed Paraffin-embedded Sections)

**Image 2.** Human Thymus: Formalin-Fixed, Paraffin-Embedded (FFPE)



### Immunohistochemistry

**Image 3.** Anti-NLRP13 antibody IHC of human lung. Immunohistochemistry of formalin-fixed, paraffin-embedded tissue after heat-induced antigen retrieval. Antibody concentration 5 ug/ml.