



[Go to Product page](#)

Datasheet for ABIN6259794  
**anti-alpha Adducin antibody**

5 Images

### Overview

Quantity:	100 µL
Target:	alpha Adducin (ADD1)
Reactivity:	Human, Mouse, Rat
Host:	Rabbit
Clonality:	Polyclonal
Conjugate:	This alpha Adducin antibody is un-conjugated
Application:	Western Blotting (WB), Immunohistochemistry (IHC), ELISA, Immunofluorescence (IF), Immunoprecipitation (IP), Immunocytochemistry (ICC)

### Product Details

Immunogen:	A synthesized peptide derived from human ADD1
Isotype:	IgG
Specificity:	ADD1 Antibody detects endogenous levels of total ADD1
Cross-Reactivity:	Human, Mouse (Murine), Rat (Rattus)
Purification:	The antiserum was purified by peptide affinity chromatography using SulfoLink™ Coupling Resin (Thermo Fisher Scientific).

### Target Details

Target:	alpha Adducin (ADD1)
Alternative Name:	ADD1 ( <a href="#">ADD1 Products</a> )

## Target Details

---

Background:	Description: Membrane-cytoskeleton-associated protein that promotes the assembly of the spectrin-actin network. Binds to calmodulin. Gene: ADD1
Molecular Weight:	80kDa
Gene ID:	118
UniProt:	<a href="#">P35611</a> , <a href="#">P35612</a>
Pathways:	<a href="#">Negative Regulation of Hormone Secretion</a> , <a href="#">Regulation of Actin Filament Polymerization</a> , <a href="#">Regulation of Lipid Metabolism by PPARalpha</a> , <a href="#">ER-Nucleus Signaling</a>

## Application Details

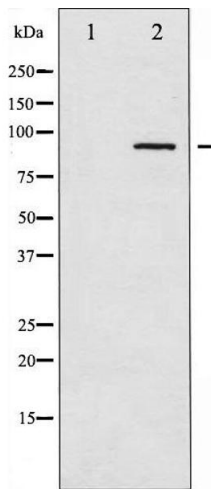
---

Application Notes:	WB 1:500-1:2000 IHC 1:50-1:200 IP IF/ICC 1:100-1:500
Restrictions:	For Research Use only

## Handling

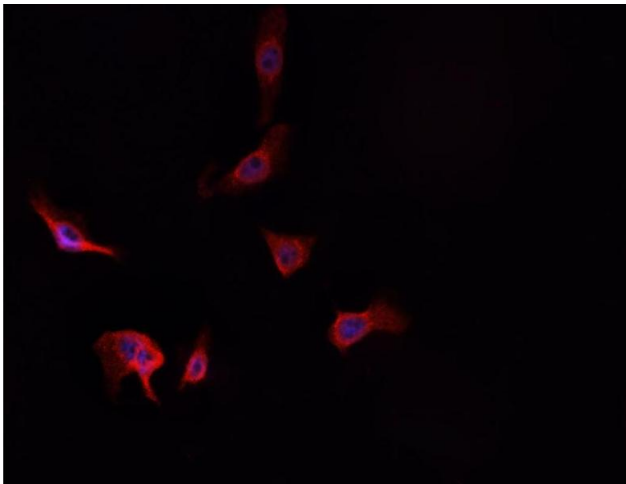
---

Format:	Liquid
Concentration:	1 mg/mL
Buffer:	Rabbit IgG in phosphate buffered saline , pH 7.4, 150 mM NaCl, 0.02 % sodium azide and 50 % glycerol.
Preservative:	Sodium azide
Precaution of Use:	This product contains Sodium azide: a POISONOUS AND HAZARDOUS SUBSTANCE which should be handled by trained staff only.
Storage:	-20 °C
Storage Comment:	Store at -20 °C.Stable for 12 months from date of receipt
Expiry Date:	12 months



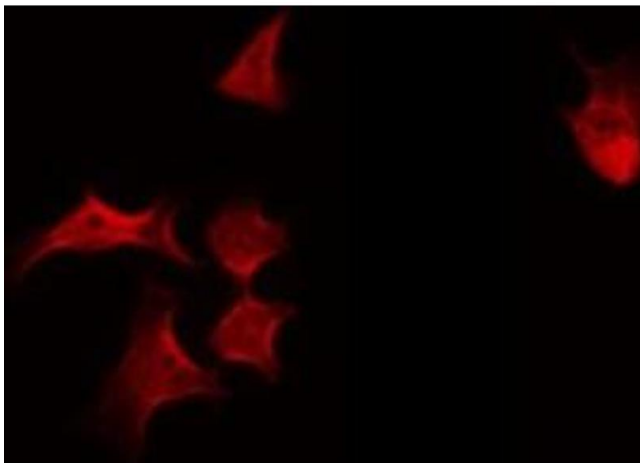
### Western Blotting

**Image 1.** Western blot analysis of ADD1 expression in Forskolin treated HeLa whole cell lysates, The lane on the left is treated with the antigen-specific peptide.



### Immunofluorescence (fixed cells)

**Image 2.** ABIN6269225 staining A-431 cells by IF/ICC. The sample were fixed with PFA and permeabilized in 0.1% Triton X-100, then blocked in 10% serum for 45 minutes at 25°C. The primary antibody was diluted at 1/200 and incubated with the sample for 1 hour at 37°C. An Alexa Fluor 594 conjugated goat anti-rabbit IgG (H+L) antibody (Cat.# S0006), diluted at 1/600, was used as secondary antibody



### Immunofluorescence (fixed cells)

**Image 3.** ABIN6269225 staining HeLa by IF/ICC. The sample were fixed with PFA and permeabilized in 0.1% Triton X-100, then blocked in 10% serum for 45 minutes at 25°C. The primary antibody was diluted at 1/200 and incubated with the sample for 1 hour at 37°C. An Alexa Fluor 594 conjugated goat anti-rabbit IgG (H+L) Ab, diluted at 1/600, was used as the secondary antibody

Please check the [product details page](#) for more images. Overall 5 images are available for ABIN6259794.