

Datasheet for ABIN6259798

anti-ADH6 antibody

2 Images

[Go to Product page](#)

Overview

Quantity:	100 µL
Target:	ADH6
Reactivity:	Human, Mouse, Rat
Host:	Rabbit
Clonality:	Polyclonal
Conjugate:	This ADH6 antibody is un-conjugated
Application:	Western Blotting (WB), ELISA, Immunohistochemistry (IHC)

Product Details

Immunogen:	A synthesized peptide derived from human ADH6
Isotype:	IgG
Specificity:	ADH6 Antibody detects endogenous levels of total ADH6
Cross-Reactivity:	Human, Mouse (Murine), Rat (Rattus)
Purification:	The antiserum was purified by peptide affinity chromatography using SulfoLink™ Coupling Resin (Thermo Fisher Scientific).

Target Details

Target:	ADH6
Alternative Name:	ADH6 (ADH6 Products)
Background:	Description: There are 7 different ADH's isozymes in human: three belongs to class-I: alpha,

Target Details

beta, and gamma, one to class-II: pi, one to class-III: chi, one to class-IV: ADH7 and one to class-V: ADH6.

Gene: ADH6

Molecular Weight: 39 kDa

Gene ID: 130

UniProt: [P28332](#)

Application Details

Application Notes: WB 1:1000-3000 IHC 1:200

Restrictions: For Research Use only

Handling

Format: Liquid

Concentration: 1 mg/mL

Buffer: Rabbit IgG in phosphate buffered saline , pH 7.4, 150 mM NaCl, 0.02 % sodium azide and 50 % glycerol.

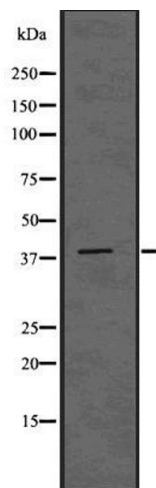
Preservative: Sodium azide

Precaution of Use: This product contains Sodium azide: a POISONOUS AND HAZARDOUS SUBSTANCE which should be handled by trained staff only.

Storage: -20 °C

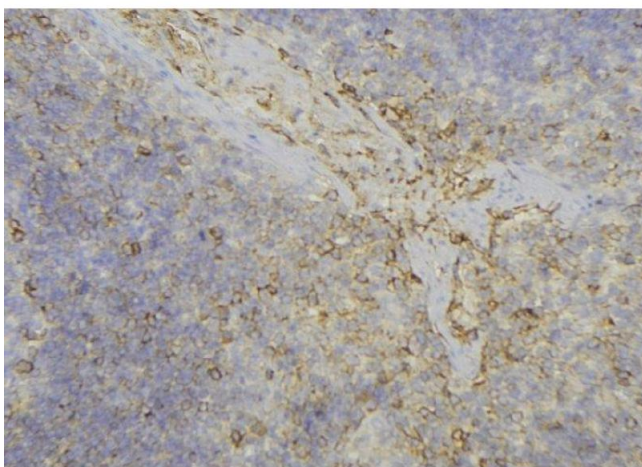
Storage Comment: Store at -20 °C.Stable for 12 months from date of receipt

Expiry Date: 12 months



Western Blotting

Image 1. Western blot analysis of ADH6 using HUVEC whole cell lysates



Immunohistochemistry

Image 2. ABIN6277719 at 1/100 staining Human lymph node tissue by IHC-P. The sample was formaldehyde fixed and a heat mediated antigen retrieval step in citrate buffer was performed. The sample was then blocked and incubated with the antibody for 1.5 hours at 22°C. An HRP conjugated goat anti-rabbit antibody was used as the secondary