

Datasheet for ABIN6259817

anti-alpha Fetoprotein antibody (C-Term)**3** Images**2** Publications[Go to Product page](#)

Overview

Quantity:	100 µL
Target:	alpha Fetoprotein (AFP)
Binding Specificity:	C-Term
Reactivity:	Human, Mouse, Rat
Host:	Rabbit
Clonality:	Polyclonal
Conjugate:	This alpha Fetoprotein antibody is un-conjugated
Application:	Western Blotting (WB), ELISA, Immunohistochemistry (IHC)

Product Details

Immunogen:	A synthesized peptide derived from human AFP, corresponding to a region within C-terminal amino acids.
Isotype:	IgG
Specificity:	AFP Antibody detects endogenous levels of total AFP.
Predicted Reactivity:	Pig,Bovine,Horse,Sheep,Rabbit,Dog
Purification:	The antiserum was purified by peptide affinity chromatography using SulfoLink™ Coupling Resin (Thermo Fisher Scientific).

Target Details

Target:	alpha Fetoprotein (AFP)
---------	-------------------------

Target Details

Alternative Name:	AFP (AFP Products)
Background:	Description: Binds copper, nickel, and fatty acids as well as, and bilirubin less well than, serum albumin. Only a small percentage (less than 2 %) of the human AFP shows estrogen-binding properties. Gene: AFP
Molecular Weight:	62-65 kDa
Gene ID:	174
UniProt:	P02771
Pathways:	C21-Steroid Hormone Metabolic Process

Application Details

Application Notes:	WB 1:500-1:2000, IHC 1:50-1:200, ELISA(peptide) 1:20000-1:40000
Restrictions:	For Research Use only

Handling

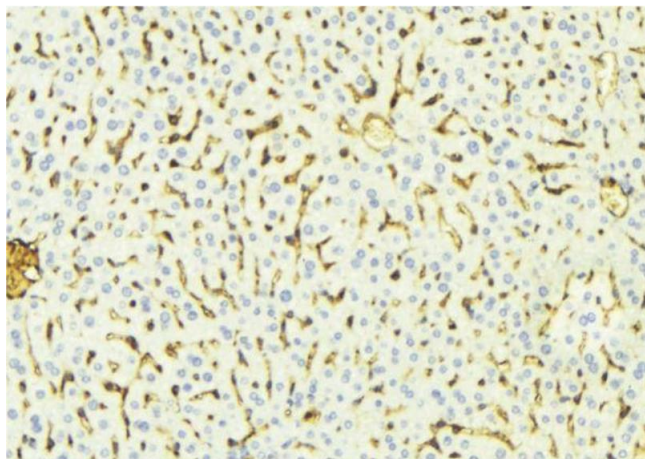
Format:	Liquid
Concentration:	1 mg/mL
Buffer:	Rabbit IgG in phosphate buffered saline , pH 7.4, 150 mM NaCl, 0.02 % sodium azide and 50 % glycerol.
Preservative:	Sodium azide
Precaution of Use:	This product contains Sodium azide: a POISONOUS AND HAZARDOUS SUBSTANCE which should be handled by trained staff only.
Storage:	-20 °C
Storage Comment:	Store at -20 °C. Stable for 12 months from date of receipt.
Expiry Date:	12 months

Publications

Product cited in:	Wu, Tang, Li, Li, Wang, Bao, Bu: "Hepatic differentiation of mouse bone marrow-derived mesenchymal stem cells using a novel 3D culture system." in: Molecular medicine reports , Vol. 16, Issue 6, pp. 9473-9479, (2018) (PubMed).
-------------------	---

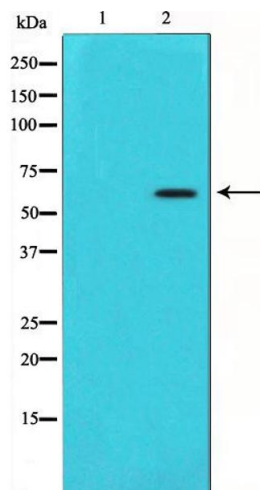
Bao, Wu, Wang, Li, Li, Chen, Wu, Xie, Bu: "Enhanced hepatic differentiation of rat bone marrow-derived mesenchymal stem cells in spheroidal aggregate culture on a decellularized liver scaffold." in: **International journal of molecular medicine**, Vol. 38, Issue 2, pp. 457-65, (2017) ([PubMed](#)).

Images



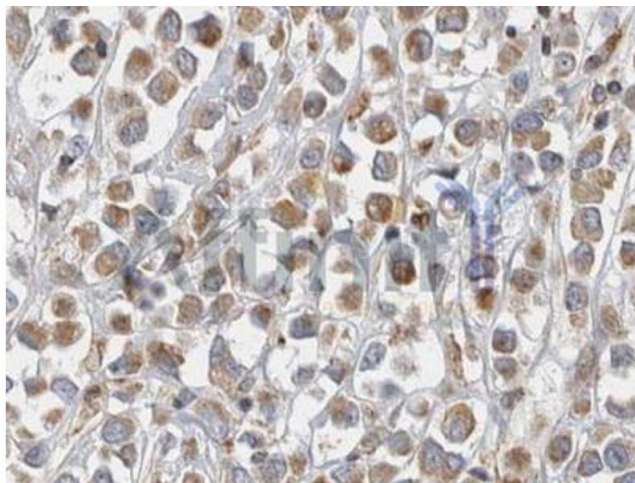
Immunohistochemistry

Image 1. ABIN6268680 at 1/100 staining Mouse liver tissue by IHC-P. The sample was formaldehyde fixed and a heat mediated antigen retrieval step in citrate buffer was performed. The sample was then blocked and incubated with the antibody for 1.5 hours at 22°C. An HRP conjugated goat anti-rabbit antibody was used as the secondary.



Western Blotting

Image 2. Western blot analysis of AFP expression in hepatocyte lysates.,The lane on the left is treated with the antigen-specific peptide.



Immunohistochemistry

Image 3. ABIN6268680 at 1/100 staining human breast tissues sections by IHC-P. The tissue was formaldehyde fixed and a heat mediated antigen retrieval step in citrate buffer was performed. The tissue was then blocked and incubated with the antibody for 1.5 hours at 103