



[Go to Product page](#)

Datasheet for ABIN6259842
anti-AIF antibody (C-Term)

4 Images

Overview

Quantity:	100 µL
Target:	AIF (AIFM1)
Binding Specificity:	C-Term
Reactivity:	Human, Mouse, Rat
Host:	Rabbit
Clonality:	Polyclonal
Conjugate:	This AIF antibody is un-conjugated
Application:	Western Blotting (WB), ELISA, Immunohistochemistry (IHC), Immunofluorescence (IF), Immunocytochemistry (ICC)

Product Details

Immunogen:	A synthesized peptide derived from human AIFM1, corresponding to a region within C-terminal amino acids.
Isotype:	IgG
Specificity:	AIFM1 Antibody detects endogenous levels of total AIFM1.
Predicted Reactivity:	Pig,Zebrafish,Bovine,Horse,Sheep,Rabbit,Dog,Chicken,Xenopus
Purification:	The antiserum was purified by peptide affinity chromatography using SulfoLink™ Coupling Resin (Thermo Fisher Scientific).

Target Details

Target:	AIF (AIFM1)
---------	-------------

Target Details

Alternative Name: AIFM1 ([AIFM1 Products](#))

Background: Description: Functions both as NADH oxidoreductase and as regulator of apoptosis. In response to apoptotic stimuli, it is released from the mitochondrion intermembrane space into the cytosol and to the nucleus, where it functions as a proapoptotic factor in a caspase-independent pathway. In contrast, functions as an antiapoptotic factor in normal mitochondria via its NADH oxidoreductase activity. The soluble form (AIFsol) found in the nucleus induces 'parthanatos' i.e. caspase-independent fragmentation of chromosomal DNA. Interacts with EIF3G, and thereby inhibits the EIF3 machinery and protein synthesis, and activates caspase-7 to amplify apoptosis. Plays a critical role in caspase-independent, pyknotic cell death in hydrogen peroxide-exposed cells. Binds to DNA in a sequence-independent manner.

Gene: AIFM1

Molecular Weight: 66kDa

Gene ID: 9131

UniProt: [O95831](#)

Pathways: [Apoptosis](#), [Positive Regulation of Endopeptidase Activity](#), [Cell Redox Homeostasis](#), [Smooth Muscle Cell Migration](#), [Warburg Effect](#)

Application Details

Application Notes: WB 1:500-1:2000, IHC 1:50-1:200, IF/ICC 1:100-1:500, ELISA(peptide) 1:20000-1:40000

Restrictions: For Research Use only

Handling

Format: Liquid

Concentration: 1 mg/mL

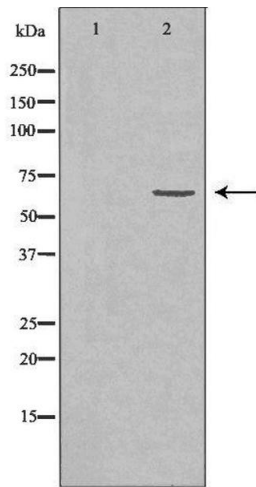
Buffer: Rabbit IgG in phosphate buffered saline , pH 7.4, 150 mM NaCl, 0.02 % sodium azide and 50 % glycerol.

Preservative: Sodium azide

Precaution of Use: This product contains Sodium azide: a POISONOUS AND HAZARDOUS SUBSTANCE which should be handled by trained staff only.

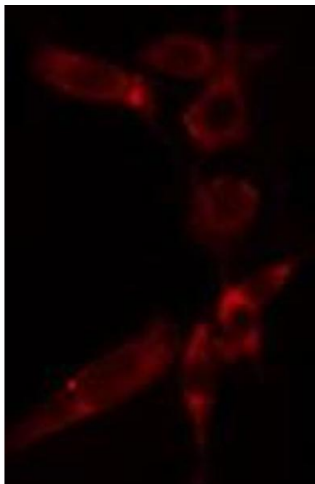
Storage: -20 °C

Storage Comment: Store at -20 °C. Stable for 12 months from date of receipt.



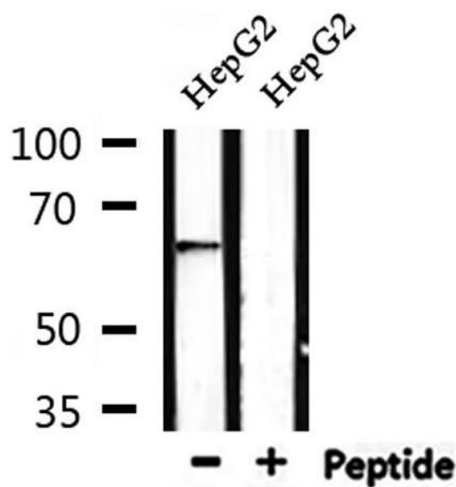
Western Blotting

Image 1. Western blot analysis of K562 whole cell lysates, using AIFM1 Antibody. The lane on the left is treated with the antigen-specific peptide.



Immunofluorescence (fixed cells)

Image 2. ABIN6277280 staining HuvEc cells by IF/ICC. The sample were fixed with PFA and permeabilized in 0.1% Triton X-100, then blocked in 10% serum for 45 minutes at 25°C. The primary antibody was diluted at 1/200 and incubated with the sample for 1 hour at 37°C. An Alexa Fluor 594 conjugated goat anti-rabbit IgG (H+L) antibody (Cat.# S0006), diluted at 1/600, was used as secondary antibody



Western Blotting

Image 3. Western blot analysis of extracts from HepG2, using AIFM1 Antibody.

Please check the [product details page](#) for more images. Overall 4 images are available for ABIN6259842.