



[Go to Product page](#)

Datasheet for ABIN6259873

## anti-ALAS1 antibody (Internal Region)

### 2 Images

#### Overview

Quantity:	100 µL
Target:	ALAS1
Binding Specificity:	Internal Region
Reactivity:	Human, Mouse
Host:	Rabbit
Clonality:	Polyclonal
Conjugate:	This ALAS1 antibody is un-conjugated
Application:	Western Blotting (WB), ELISA, Immunohistochemistry (IHC), Immunofluorescence (IF), Immunocytochemistry (ICC)

#### Product Details

Immunogen:	A synthesized peptide derived from human Alas1, corresponding to a region within the internal amino acids.
Isotype:	IgG
Specificity:	Alas1 Antibody detects endogenous levels of total Alas1.
Predicted Reactivity:	Pig,Zebrafish,Bovine,Horse,Rabbit,Dog,Chicken,Xenopus
Purification:	The antiserum was purified by peptide affinity chromatography using SulfoLink™ Coupling Resin (Thermo Fisher Scientific).

#### Target Details

Target:	ALAS1
---------	-------

## Target Details

---

Alternative Name:	ALAS1 ( <a href="#">ALAS1 Products</a> )
Background:	Description: There are two delta-ALA synthases in vertebrates: an erythroid- specific form and one (housekeeping) which is expressed in all tissues. Gene: ALAS1
Molecular Weight:	71kDa
Gene ID:	211
UniProt:	<a href="#">P13196</a>
Pathways:	<a href="#">Regulation of Lipid Metabolism by PPARalpha</a>

## Application Details

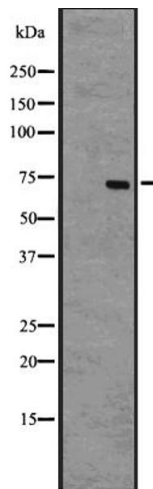
---

Application Notes:	WB 1:1000-3000, IF/ICC, IHC 1:50-1:200, ELISA(peptide) 1:20000-1:40000
Restrictions:	For Research Use only

## Handling

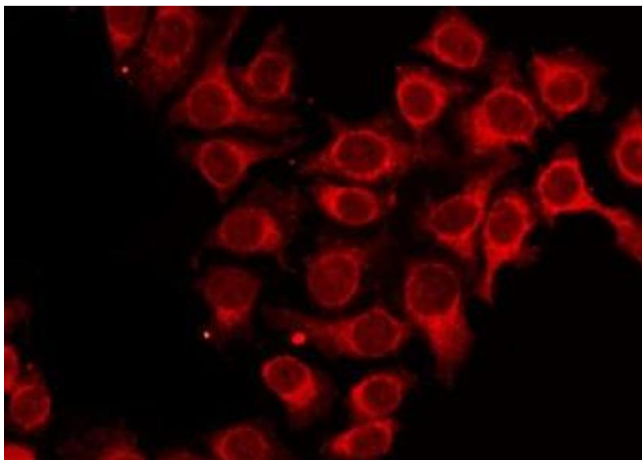
---

Format:	Liquid
Concentration:	1 mg/mL
Buffer:	Rabbit IgG in phosphate buffered saline , pH 7.4, 150 mM NaCl, 0.02 % sodium azide and 50 % glycerol.
Preservative:	Sodium azide
Precaution of Use:	This product contains Sodium azide: a POISONOUS AND HAZARDOUS SUBSTANCE which should be handled by trained staff only.
Storage:	-20 °C
Storage Comment:	Store at -20 °C. Stable for 12 months from date of receipt.
Expiry Date:	12 months



### Western Blotting

**Image 1.** Western blot analysis of Alas1 using HUVEC whole cell lysates



### Immunofluorescence (fixed cells)

**Image 2.** ABIN6273990 staining HepG2 by IF/ICC. The sample were fixed with PFA and permeabilized in 0.1% Triton X-100, then blocked in 10% serum for 45 minutes at 25°C. The primary antibody was diluted at 1/200 and incubated with the sample for 1 hour at 37°C. An Alexa Fluor 594 conjugated goat anti-rabbit IgG (H+L) Ab, diluted at 1/600, was used as the secondary antibody.