

Datasheet for ABIN6259890  
**anti-ALMS1 antibody (C-Term)**

## 2 Images

[Go to Product page](#)

## Overview

Quantity:	100 µL
Target:	ALMS1
Binding Specificity:	C-Term
Reactivity:	Human, Rat
Host:	Rabbit
Clonality:	Polyclonal
Conjugate:	This ALMS1 antibody is un-conjugated
Application:	ELISA, Western Blotting (WB), Immunohistochemistry (IHC)

## Product Details

Immunogen:	A synthesized peptide derived from human ALMS1, corresponding to a region within C-terminal amino acids.
Isotype:	IgG
Specificity:	ALMS1 Antibody detects endogenous levels of total ALMS1.
Predicted Reactivity:	Xenopus
Purification:	The antiserum was purified by peptide affinity chromatography using SulfoLink™ Coupling Resin (Thermo Fisher Scientific).

## Target Details

Target:	ALMS1
---------	-------

## Target Details

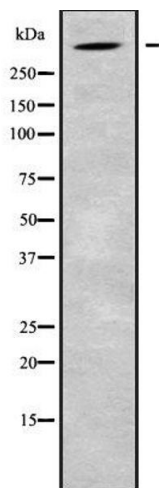
Alternative Name:	ALMS1 ( <a href="#">ALMS1 Products</a> )
Background:	<p>Description: Involved in PCM1-dependent intracellular transport. Required, directly or indirectly, for the localization of NCAPD2 to the proximal ends of centrioles. Required for proper formation and/or maintenance of primary cilia (PC), microtubule-based structures that protrude from the surface of epithelial cells.</p> <p>Gene: ALMS1</p>
Molecular Weight:	461kDa
Gene ID:	7840
UniProt:	<a href="#">Q8TCU4</a>
Pathways:	<a href="#">Sensory Perception of Sound</a> , <a href="#">Carbohydrate Homeostasis</a> , <a href="#">M Phase</a>

## Application Details

Application Notes:	WB 1:1000-3000, IHC 1:200, ELISA(peptide) 1:20000-1:40000
Restrictions:	For Research Use only

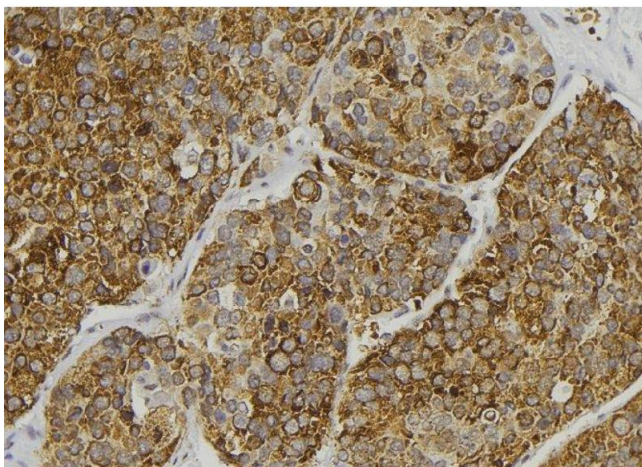
## Handling

Format:	Liquid
Concentration:	1 mg/mL
Buffer:	Rabbit IgG in phosphate buffered saline , pH 7.4, 150 mM NaCl, 0.02 % sodium azide and 50 % glycerol.
Preservative:	Sodium azide
Precaution of Use:	This product contains Sodium azide: a POISONOUS AND HAZARDOUS SUBSTANCE which should be handled by trained staff only.
Storage:	-20 °C
Storage Comment:	Store at -20 °C. Stable for 12 months from date of receipt.
Expiry Date:	12 months



### Western Blotting

**Image 1.** Western blot analysis of ALMS1 using HeLa whole cell lysates



### Immunohistochemistry

**Image 2.** ABIN6279111 at 1/100 staining Human pancreas tissue by IHC-P. The sample was formaldehyde fixed and a heat mediated antigen retrieval step in citrate buffer was performed. The sample was then blocked and incubated with the antibody for 1.5 hours at 22°C. An HRP conjugated goat anti-rabbit antibody was used as the secondary