



[Go to Product page](#)

Datasheet for ABIN6259899
anti-ALPK3 antibody (C-Term)

1 Image

Overview

Quantity:	100 µL
Target:	ALPK3
Binding Specificity:	C-Term
Reactivity:	Human, Mouse
Host:	Rabbit
Clonality:	Polyclonal
Conjugate:	This ALPK3 antibody is un-conjugated
Application:	ELISA, Western Blotting (WB)

Product Details

Immunogen:	A synthesized peptide derived from human ALPK3, corresponding to a region within C-terminal amino acids.
Isotype:	IgG
Specificity:	ALPK3 Antibody detects endogenous levels of total ALPK3.
Predicted Reactivity:	Bovine,Horse,Sheep,Dog
Purification:	The antiserum was purified by peptide affinity chromatography using SulfoLink™ Coupling Resin (Thermo Fisher Scientific).

Target Details

Target:	ALPK3
---------	-------

Target Details

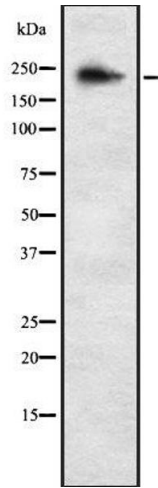
Alternative Name:	ALPK3 (ALPK3 Products)
Background:	Description: Kinase that recognizes phosphorylation sites in which the surrounding peptides have an alpha-helical conformation. Plays a role in cardiomyocyte differentiation (By similarity). Gene: ALPK3
Molecular Weight:	201kDa
Gene ID:	57538
UniProt:	Q96L96

Application Details

Application Notes:	WB 1:1000-3000, ELISA(peptide) 1:20000-1:40000
Restrictions:	For Research Use only

Handling

Format:	Liquid
Concentration:	1 mg/mL
Buffer:	Rabbit IgG in phosphate buffered saline , pH 7.4, 150 mM NaCl, 0.02 % sodium azide and 50 % glycerol.
Preservative:	Sodium azide
Precaution of Use:	This product contains Sodium azide: a POISONOUS AND HAZARDOUS SUBSTANCE which should be handled by trained staff only.
Storage:	-20 °C
Storage Comment:	Store at -20 °C. Stable for 12 months from date of receipt.
Expiry Date:	12 months



Western Blotting

Image 1. Western blot analysis of ALPK3 using K562 whole cell lysates