

Datasheet for ABIN6259932
anti-ANGPTL4 antibody (N-Term)[Go to Product page](#)

2 Images

Overview

Quantity:	100 µL
Target:	ANGPTL4
Binding Specificity:	N-Term
Reactivity:	Human, Mouse, Rat
Host:	Rabbit
Clonality:	Polyclonal
Conjugate:	This ANGPTL4 antibody is un-conjugated
Application:	Western Blotting (WB), Immunohistochemistry (IHC), ELISA

Product Details

Immunogen:	A synthesized peptide derived from human ANGPTL4, corresponding to a region within N-terminal amino acids.
Isotype:	IgG
Specificity:	ANGPTL4 Antibody detects endogenous levels of total ANGPTL4.
Purification:	The antiserum was purified by peptide affinity chromatography using SulfoLink™ Coupling Resin (Thermo Fisher Scientific).

Target Details

Target:	ANGPTL4
Alternative Name:	ANGPTL4 (ANGPTL4 Products)

Target Details

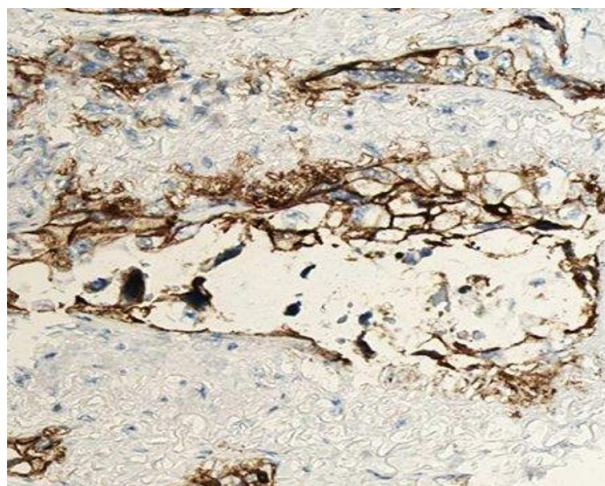
Background:	<p>Description: Protein with hypoxia-induced expression in endothelial cells. May act as a regulator of angiogenesis and modulate tumorigenesis. Inhibits proliferation, migration, and tubule formation of endothelial cells and reduces vascular leakage. May exert a protective function on endothelial cells through an endocrine action. It is directly involved in regulating glucose homeostasis, lipid metabolism, and insulin sensitivity. In response to hypoxia, the unprocessed form of the protein accumulates in the subendothelial extracellular matrix (ECM). The matrix-associated and immobilized unprocessed form limits the formation of actin stress fibers and focal contacts in the adhering endothelial cells and inhibits their adhesion. It also decreases motility of endothelial cells and inhibits the sprouting and tube formation (By similarity).</p> <p>Gene: ANGPTL4</p>
Molecular Weight:	45kDa
Gene ID:	51129
UniProt:	Q9BY76
Pathways:	Regulation of Lipid Metabolism by PPARalpha

Application Details

Application Notes:	WB 1:500-1:2000, IHC 1:50-1:200, ELISA(peptide) 1:20000-1:40000
Restrictions:	For Research Use only

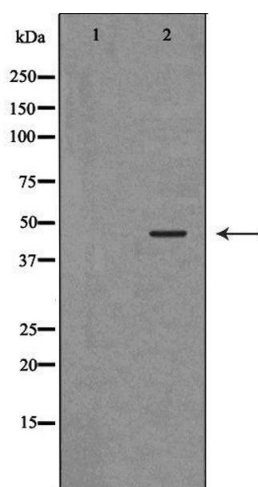
Handling

Format:	Liquid
Concentration:	1 mg/mL
Buffer:	Rabbit IgG in phosphate buffered saline , pH 7.4, 150 mM NaCl, 0.02 % sodium azide and 50 % glycerol.
Preservative:	Sodium azide
Precaution of Use:	This product contains Sodium azide: a POISONOUS AND HAZARDOUS SUBSTANCE which should be handled by trained staff only.
Storage:	-20 °C
Storage Comment:	Store at -20 °C. Stable for 12 months from date of receipt.
Expiry Date:	12 months



Immunohistochemistry

Image 1. ABIN6277014 at 1/100 staining human lung carcinoma tissue sections by IHC-P. The tissue was formaldehyde fixed and a heat mediated antigen retrieval step in citrate buffer was performed. The tissue was then blocked and incubated with the antibody for 1.5 hours at 22°C. An HRP conjugated goat anti-rabbit antibody was used as the secondary



Western Blotting

Image 2. Western blot analysis of extracts of mouse skeletal muscle, using ANGPTL4 antibody. The lane on the left is treated with the antigen-specific peptide.