

Datasheet for ABIN6259936
anti-ANKRD26 antibody (Internal Region)[Go to Product page](#)

1 Image

Overview

Quantity:	100 µL
Target:	ANKRD26
Binding Specificity:	Internal Region
Reactivity:	Human, Mouse, Rat
Host:	Rabbit
Clonality:	Polyclonal
Conjugate:	This ANKRD26 antibody is un-conjugated
Application:	ELISA, Immunohistochemistry (IHC), Western Blotting (WB)

Product Details

Immunogen:	A synthesized peptide derived from human ANKRD26, corresponding to a region within the internal amino acids.
Isotype:	IgG
Specificity:	ANKRD26 Antibody detects endogenous levels of total ANKRD26.
Predicted Reactivity:	Chicken
Purification:	The antiserum was purified by peptide affinity chromatography using SulfoLink™ Coupling Resin (Thermo Fisher Scientific).

Target Details

Target:	ANKRD26
---------	---------

Target Details

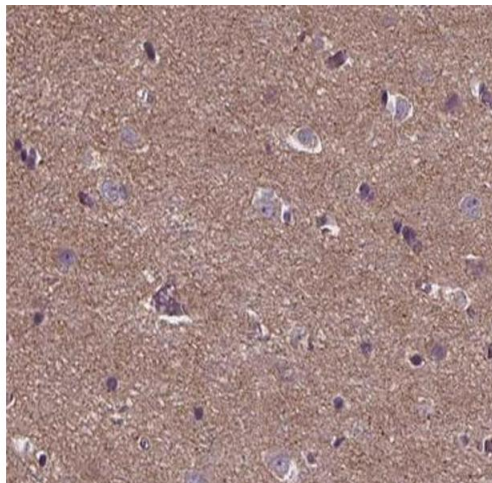
Alternative Name:	ANKRD26 (ANKRD26 Products)
Background:	Description: Acts as a regulator of adipogenesis. Involved in the regulation of the feeding behavior. Gene: ANKRD26
Molecular Weight:	196kDa
Gene ID:	22852
UniProt:	Q9UPS8
Pathways:	Feeding Behaviour

Application Details

Application Notes:	IHC 1:50-1:200, WB 1:500-1:2000, ELISA(peptide) 1:20000-1:40000
Restrictions:	For Research Use only

Handling

Format:	Liquid
Concentration:	1 mg/mL
Buffer:	Rabbit IgG in phosphate buffered saline , pH 7.4, 150 mM NaCl, 0.02 % sodium azide and 50 % glycerol.
Preservative:	Sodium azide
Precaution of Use:	This product contains Sodium azide: a POISONOUS AND HAZARDOUS SUBSTANCE which should be handled by trained staff only.
Storage:	-20 °C
Storage Comment:	Store at -20 °C. Stable for 12 months from date of receipt.
Expiry Date:	12 months



Immunohistochemistry

Image 1. ABIN6266756 at 1/100 staining human brain tissue sections by IHC-P. The tissue was formaldehyde fixed and a heat mediated antigen retrieval step in citrate buffer was performed. The tissue was then blocked and incubated with the antibody for 1.5 hours at 22°C. An HRP conjugated goat anti-rabbit antibody was used as the secondary.