



[Go to Product page](#)

Datasheet for ABIN6259940
anti-Annexin A3 antibody (N-Term)

2 Images

Overview

Quantity:	100 µL
Target:	Annexin A3 (ANXA3)
Binding Specificity:	N-Term
Reactivity:	Human, Mouse, Rat
Host:	Rabbit
Clonality:	Polyclonal
Conjugate:	This Annexin A3 antibody is un-conjugated
Application:	Western Blotting (WB), Immunohistochemistry (IHC), ELISA

Product Details

Immunogen:	A synthesized peptide derived from human Annexin III, corresponding to a region within N-terminal amino acids.
Isotype:	IgG
Specificity:	Annexin III Antibody detects endogenous levels of total Annexin III.
Predicted Reactivity:	Bovine,Horse,Sheep,Rabbit,Dog,Xenopus
Purification:	The antiserum was purified by peptide affinity chromatography using SulfoLink™ Coupling Resin (Thermo Fisher Scientific).

Target Details

Target:	Annexin A3 (ANXA3)
---------	--------------------

Target Details

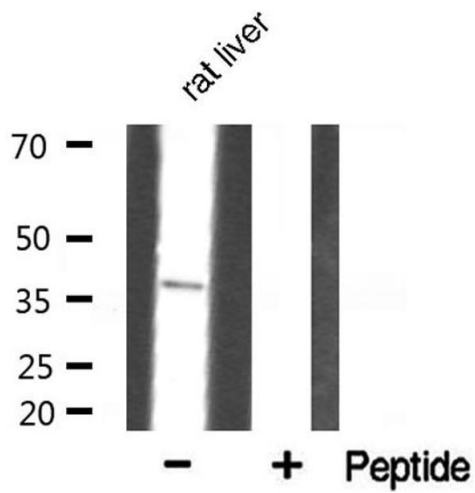
Alternative Name:	ANXA3 (ANXA3 Products)
Background:	Description: Inhibitor of phospholipase A2, also possesses anti-coagulant properties. Also cleaves the cyclic bond of inositol 1,2-cyclic phosphate to form inositol 1-phosphate. Gene: ANXA3
Molecular Weight:	36 kDa
Gene ID:	306
UniProt:	P12429

Application Details

Application Notes:	WB 1:500-1:2000, IHC 1:50-1:200, ELISA(peptide) 1:20000-1:40000
Restrictions:	For Research Use only

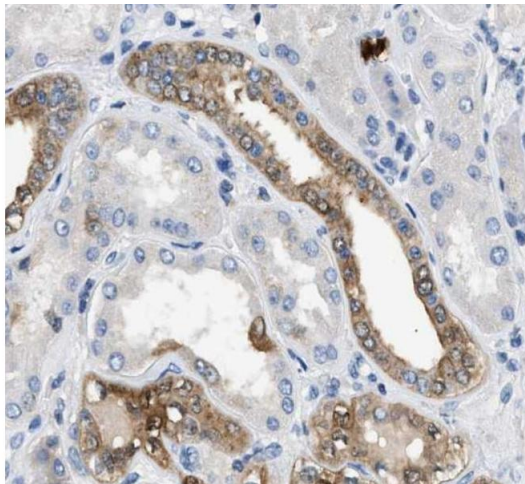
Handling

Format:	Liquid
Concentration:	1 mg/mL
Buffer:	Rabbit IgG in phosphate buffered saline , pH 7.4, 150 mM NaCl, 0.02 % sodium azide and 50 % glycerol.
Preservative:	Sodium azide
Precaution of Use:	This product contains Sodium azide: a POISONOUS AND HAZARDOUS SUBSTANCE which should be handled by trained staff only.
Storage:	-20 °C
Storage Comment:	Store at -20 °C. Stable for 12 months from date of receipt.
Expiry Date:	12 months



Western Blotting

Image 1. Western blot analysis of Annexin III Antibody expression in rat liver tissue lysates. The lane on the right is treated with the antigen-specific peptide.



Immunohistochemistry

Image 2. Annexin A3 Antibody for IHC in human kidney tissue