



[Go to Product page](#)

Datasheet for ABIN6259968

## anti-APAF1 antibody (C-Term)

### 3 Images

#### Overview

Quantity:	100 µL
Target:	APAF1
Binding Specificity:	C-Term
Reactivity:	Human, Mouse, Rat
Host:	Rabbit
Clonality:	Polyclonal
Conjugate:	This APAF1 antibody is un-conjugated
Application:	Western Blotting (WB), ELISA, Immunohistochemistry (IHC), Immunofluorescence (IF), Immunocytochemistry (ICC)

#### Product Details

Immunogen:	A synthesized peptide derived from human APAF1, corresponding to a region within C-terminal amino acids.
Isotype:	IgG
Specificity:	APAF1 Antibody detects endogenous levels of total APAF1.
Purification:	The antiserum was purified by peptide affinity chromatography using SulfoLink™ Coupling Resin (Thermo Fisher Scientific).

#### Target Details

Target:	APAF1
Alternative Name:	APAF1 ( <a href="#">APAF1 Products</a> )

## Target Details

---

Background:	Description: Oligomeric Apaf-1 mediates the cytochrome c-dependent autocatalytic activation of pro-caspase-9 (Apaf-3), leading to the activation of caspase-3 and apoptosis. This activation requires ATP. Isoform 6 is less effective in inducing apoptosis. Gene: APAF1
Molecular Weight:	27kDa
Gene ID:	317
UniProt:	<a href="#">O14727</a>
Pathways:	<a href="#">p53 Signaling</a> , <a href="#">Apoptosis</a> , <a href="#">Caspase Cascade in Apoptosis</a> , <a href="#">Tube Formation</a> , <a href="#">Positive Regulation of Endopeptidase Activity</a>

## Application Details

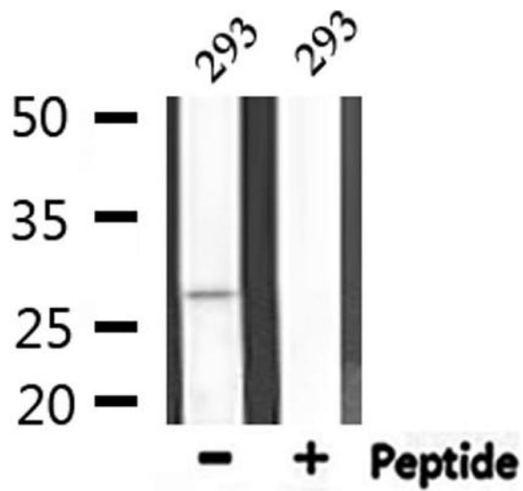
---

Application Notes:	WB: 1:500-1:3000, IHC: 1:50-1:200, IF/ICC 1:100-1:500, ELISA(peptide) 1:20000-1:40000
Restrictions:	For Research Use only

## Handling

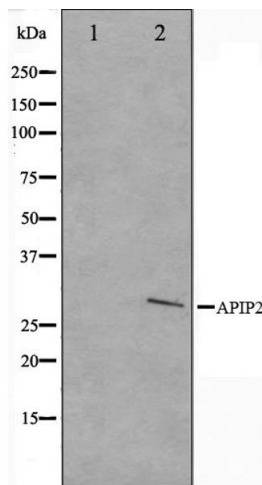
---

Format:	Liquid
Concentration:	1 mg/mL
Buffer:	Rabbit IgG in phosphate buffered saline , pH 7.4, 150 mM NaCl, 0.02 % sodium azide and 50 % glycerol.
Preservative:	Sodium azide
Precaution of Use:	This product contains Sodium azide: a POISONOUS AND HAZARDOUS SUBSTANCE which should be handled by trained staff only.
Storage:	-20 °C
Storage Comment:	Store at -20 °C. Stable for 12 months from date of receipt.
Expiry Date:	12 months



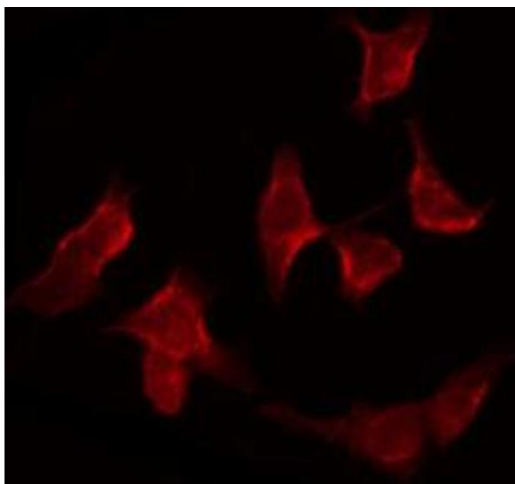
#### Western Blotting

**Image 1.** Western blot analysis of extracts from 293, using APAF1 Antibody.



#### Western Blotting

**Image 2.** Western blot analysis on COLO205 cell lysate using APAF1 Antibody. The lane on the left is treated with the antigen-specific peptide.



#### Immunofluorescence (fixed cells)

**Image 3.** ABIN6266497 staining COLO205 by IF/ICC. The sample were fixed with PFA and permeabilized in 0.1% Triton X-100, then blocked in 10% serum for 45 minutes at 25°C. The primary antibody was diluted at 1/200 and incubated with the sample for 1 hour at 37°C. An Alexa Fluor 594 conjugated goat anti-rabbit IgG (H+L) Ab, diluted at 1/600, was used as the secondary antibody.