

Datasheet for ABIN6259979  
**anti-APLF antibody (Internal Region)**[Go to Product page](#)

## 2 Images

## Overview

Quantity:	100 µL
Target:	APLF
Binding Specificity:	Internal Region
Reactivity:	Human, Mouse, Rat
Host:	Rabbit
Clonality:	Polyclonal
Conjugate:	This APLF antibody is un-conjugated
Application:	ELISA, Immunohistochemistry (IHC), Western Blotting (WB)

## Product Details

Immunogen:	A synthesized peptide derived from human APLF, corresponding to a region within the internal amino acids.
Isotype:	IgG
Specificity:	APLF Antibody detects endogenous levels of total APLF.
Predicted Reactivity:	Pig,Bovine,Horse,Sheep,Dog
Purification:	The antiserum was purified by peptide affinity chromatography using SulfoLink™ Coupling Resin (Thermo Fisher Scientific).

## Target Details

Target:	APLF
---------	------

## Target Details

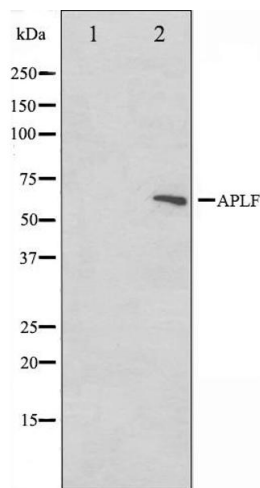
Alternative Name:	APLF ( <a href="#">APLF Products</a> )
Background:	<p>Description: Nuclease involved in single-strand and double-strand DNA break repair. Recruited to sites of DNA damage through interaction with poly(ADP-ribose), a polymeric post-translational modification synthesized transiently at sites of chromosomal damage to accelerate DNA strand break repair reactions. Displays apurinic-apyrimidinic (AP) endonuclease and 3'-5' exonuclease activities in vitro. Also able to introduce nicks at hydroxyuracil and other types of pyrimidine base damage.</p> <p>Gene: APLF</p>
Molecular Weight:	57kDa
Gene ID:	200558
UniProt:	<a href="#">Q8IW19</a>
Pathways:	<a href="#">DNA Damage Repair</a>

## Application Details

Application Notes:	WB: 1:500-1:3000, IHC: 1:50-1:200, ELISA(peptide) 1:20000-1:40000
Restrictions:	For Research Use only

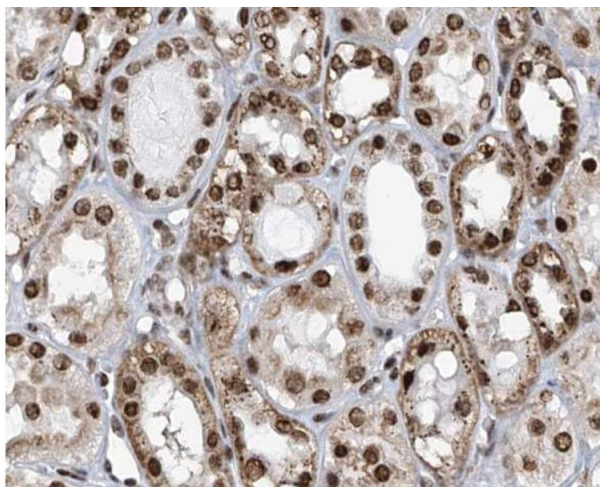
## Handling

Format:	Liquid
Concentration:	1 mg/mL
Buffer:	Rabbit IgG in phosphate buffered saline , pH 7.4, 150 mM NaCl, 0.02 % sodium azide and 50 % glycerol.
Preservative:	Sodium azide
Precaution of Use:	This product contains Sodium azide: a POISONOUS AND HAZARDOUS SUBSTANCE which should be handled by trained staff only.
Storage:	-20 °C
Storage Comment:	Store at -20 °C. Stable for 12 months from date of receipt.
Expiry Date:	12 months



### Western Blotting

**Image 1.** Western blot analysis on rat heart cell lysate using APLF Antibody. The lane on the left is treated with the antigen-specific peptide.



### Immunohistochemistry

**Image 2.** IHC analysis of human kidney, using APLF Antibody at 1/100.