

Datasheet for ABIN6259981
anti-APOA1 antibody (N-Term)[Go to Product page](#)

4 Images

Overview

Quantity:	100 µL
Target:	APOA1
Binding Specificity:	N-Term
Reactivity:	Human, Mouse, Rat
Host:	Rabbit
Clonality:	Polyclonal
Conjugate:	This APOA1 antibody is un-conjugated
Application:	Western Blotting (WB), ELISA, Immunohistochemistry (IHC)

Product Details

Immunogen:	A synthesized peptide derived from human APOA1, corresponding to a region within N-terminal amino acids.
Isotype:	IgG
Specificity:	APOA1 Antibody detects endogenous levels of total APOA1.
Predicted Reactivity:	Pig,Bovine,Horse,Sheep,Rabbit,Dog
Purification:	The antiserum was purified by peptide affinity chromatography using SulfoLink™ Coupling Resin (Thermo Fisher Scientific).

Target Details

Target:	APOA1
---------	-------

Target Details

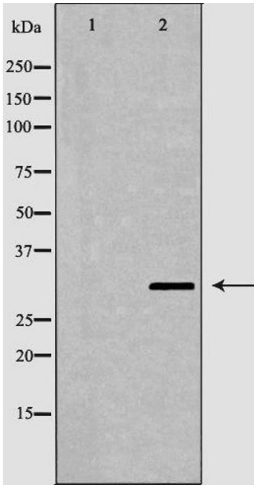
Alternative Name:	APOA1 (APOA1 Products)
Background:	<p>Description: Participates in the reverse transport of cholesterol from tissues to the liver for excretion by promoting cholesterol efflux from tissues and by acting as a cofactor for the lecithin cholesterol acyltransferase (LCAT). As part of the SPAP complex, activates spermatozoa motility.</p> <p>Gene: APOA1</p>
Molecular Weight:	31kDa
Gene ID:	335
UniProt:	P02647
Pathways:	Regulation of Lipid Metabolism by PPARalpha , Production of Molecular Mediator of Immune Response , Lipid Metabolism

Application Details

Application Notes:	WB 1:500-1:2000, IHC 1:50-1:200, ELISA(peptide) 1:20000-1:40000
Restrictions:	For Research Use only

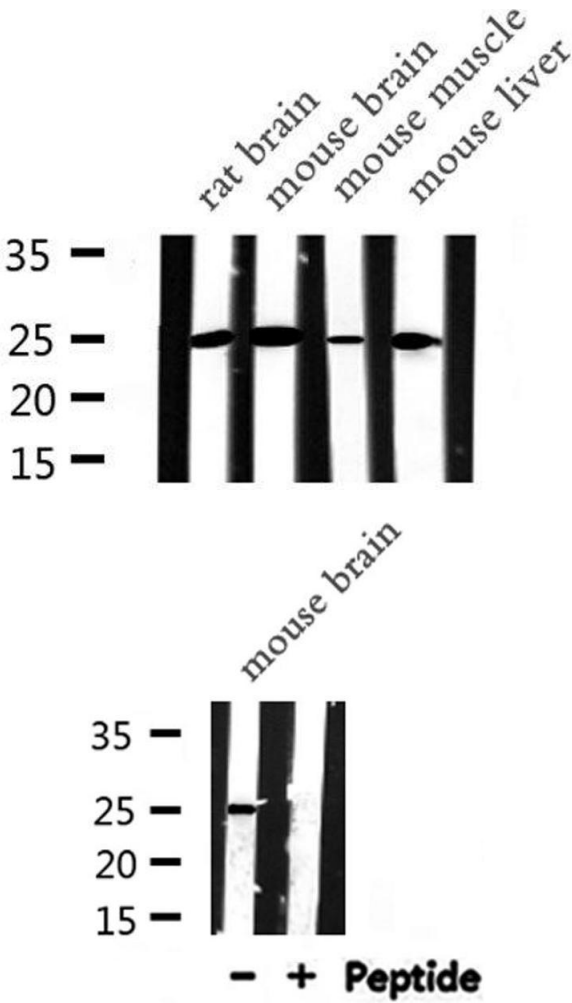
Handling

Format:	Liquid
Concentration:	1 mg/mL
Buffer:	Rabbit IgG in phosphate buffered saline , pH 7.4, 150 mM NaCl, 0.02 % sodium azide and 50 % glycerol.
Preservative:	Sodium azide
Precaution of Use:	This product contains Sodium azide: a POISONOUS AND HAZARDOUS SUBSTANCE which should be handled by trained staff only.
Storage:	-20 °C
Storage Comment:	Store at -20 °C. Stable for 12 months from date of receipt.
Expiry Date:	12 months



Western Blotting

Image 1. Western blot analysis of brain using APOA1 antibody. The lane on the left is treated with the antigen-specific peptide.



Western Blotting

Image 2. Western blot analysis of APOA1 expression in various lysates

Western Blotting

Image 3. Western blot analysis of APOA1 expression in Mouse brain lysate

Please check the [product details page](#) for more images. Overall 4 images are available for ABIN6259981.