



[Go to Product page](#)

Datasheet for ABIN6259991

anti-APOC3 antibody (Internal Region)

2 Images

Overview

Quantity:	100 µL
Target:	APOC3
Binding Specificity:	Internal Region
Reactivity:	Human, Rat, Mouse
Host:	Rabbit
Clonality:	Polyclonal
Conjugate:	This APOC3 antibody is un-conjugated
Application:	Western Blotting (WB), ELISA, Immunohistochemistry (IHC), Immunocytochemistry (ICC), Immunofluorescence (IF)

Product Details

Immunogen:	A synthesized peptide derived from human APOC3, corresponding to a region within the internal amino acids.
Isotype:	IgG
Specificity:	APOC3 Antibody detects endogenous levels of total APOC3.
Predicted Reactivity:	Pig,Bovine,Horse,Sheep,Dog
Purification:	The antiserum was purified by peptide affinity chromatography using SulfoLink™ Coupling Resin (Thermo Fisher Scientific).

Target Details

Target:	APOC3
---------	-------

Target Details

Alternative Name: [APOC3 \(APOC3 Products\)](#)

Background: Description: Component of triglyceride-rich very low density lipoproteins (VLDL) and high density lipoproteins (HDL) in plasma (PubMed:18201179, PubMed:22510806). Plays a multifaceted role in triglyceride homeostasis (PubMed:18201179, PubMed:22510806). Intracellularly, promotes hepatic very low density lipoprotein 1 (VLDL1) assembly and secretion, extracellularly, attenuates hydrolysis and clearance of triglyceride-rich lipoproteins (TRLs) (PubMed:18201179, PubMed:22510806). Impairs the lipolysis of TRLs by inhibiting lipoprotein lipase and the hepatic uptake of TRLs by remnant receptors (PubMed:18201179, PubMed:22510806). Formed of several curved helices connected via semiflexible hinges, so that it can wrap tightly around the curved micelle surface and easily adapt to the different diameters of its natural binding partners (PubMed:18408013).

Gene: APOC3

Molecular Weight: 11 kDa

Gene ID: 345

UniProt: [P02656](#)

Pathways: [Carbohydrate Homeostasis](#), [Lipid Metabolism](#)

Application Details

Application Notes: WB 1:1000-3000, IHC 1:200, IF/ICC 1:100-1:500, ELISA(peptide) 1:20000-1:40000

Restrictions: For Research Use only

Handling

Format: Liquid

Concentration: 1 mg/mL

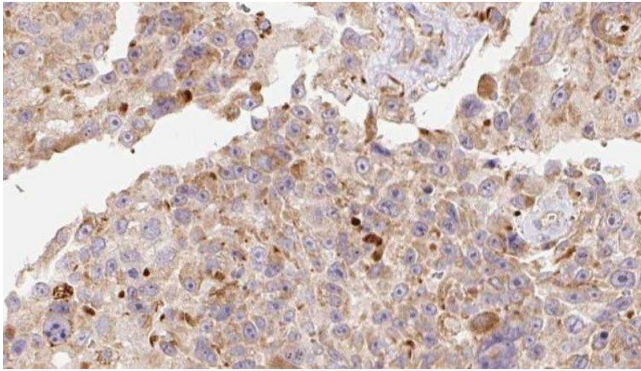
Buffer: Rabbit IgG in phosphate buffered saline , pH 7.4, 150 mM NaCl, 0.02 % sodium azide and 50 % glycerol.

Preservative: Sodium azide

Precaution of Use: This product contains Sodium azide: a POISONOUS AND HAZARDOUS SUBSTANCE which should be handled by trained staff only.

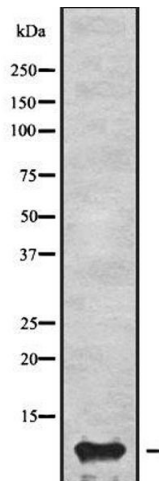
Storage: -20 °C

Storage Comment: Store at -20 °C. Stable for 12 months from date of receipt.



Immunohistochemistry

Image 1. ABIN6278123 at 1/100 staining Human Melanoma tissue by IHC-P. The sample was formaldehyde fixed and a heat mediated antigen retrieval step in citrate buffer was performed. The sample was then blocked and incubated with the antibody for 1.5 hours at 22;ãC. An HRP conjugated goat anti-rabbit antibody was used as the secondary



Western Blotting

Image 2. Western blot analysis of APOC3 using K562 whole cell lysates