



[Go to Product page](#)

Datasheet for ABIN6260002

anti-APRT antibody (Internal Region)

2 Images

Overview

Quantity:	100 µL
Target:	APRT
Binding Specificity:	Internal Region
Reactivity:	Human, Rat, Mouse
Host:	Rabbit
Clonality:	Polyclonal
Conjugate:	This APRT antibody is un-conjugated
Application:	Western Blotting (WB), Immunohistochemistry (IHC), ELISA, Immunofluorescence (IF), Immunocytochemistry (ICC)

Product Details

Immunogen:	A synthesized peptide derived from human APRT, corresponding to a region within the internal amino acids.
Isotype:	IgG
Specificity:	APRT Antibody detects endogenous levels of total APRT.
Predicted Reactivity:	Pig,Zebrafish,Bovine,Horse,Sheep,Dog,Chicken
Purification:	The antiserum was purified by peptide affinity chromatography using SulfoLink™ Coupling Resin (Thermo Fisher Scientific).

Target Details

Target:	APRT
---------	------

Target Details

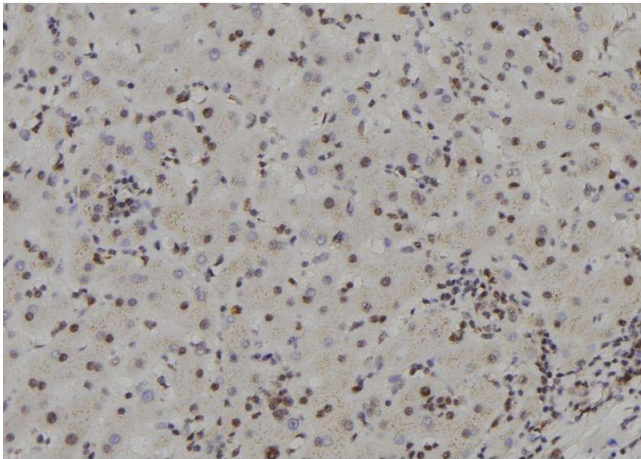
Alternative Name:	APRT (APRT Products)
Background:	Description: Catalyzes a salvage reaction resulting in the formation of AMP, that is energetically less costly than de novo synthesis. Gene: APRT
Molecular Weight:	19kDa
Gene ID:	353
UniProt:	P07741
Pathways:	Ribonucleoside Biosynthetic Process

Application Details

Application Notes:	WB 1:500-1:2000, IHC 1:50-1:200, IF/ICC 1:100-1:500, ELISA(peptide) 1:20000-1:40000
Restrictions:	For Research Use only

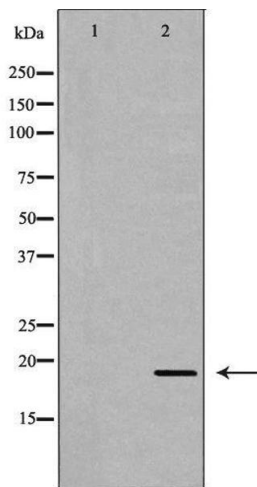
Handling

Format:	Liquid
Concentration:	1 mg/mL
Buffer:	Rabbit IgG in phosphate buffered saline , pH 7.4, 150 mM NaCl, 0.02 % sodium azide and 50 % glycerol.
Preservative:	Sodium azide
Precaution of Use:	This product contains Sodium azide: a POISONOUS AND HAZARDOUS SUBSTANCE which should be handled by trained staff only.
Storage:	-20 °C
Storage Comment:	Store at -20 °C. Stable for 12 months from date of receipt.
Expiry Date:	12 months



Immunohistochemistry

Image 1. ABIN6277593 at 1/100 staining Human liver tissue by IHC-P. The sample was formaldehyde fixed and a heat mediated antigen retrieval step in citrate buffer was performed. The sample was then blocked and incubated with the antibody for 1.5 hours at 22°C. An HRP conjugated goat anti-rabbit antibody was used as the secondary



Western Blotting

Image 2. Western blot analysis of HeLa whole cell lysates, using APRT Antibody. The lane on the left is treated with the antigen-specific peptide.