

Datasheet for ABIN6260017
anti-NOL3 antibody (C-Term)[Go to Product page](#)

4 Images

Overview

Quantity:	100 µL
Target:	NOL3
Binding Specificity:	C-Term
Reactivity:	Human, Mouse
Host:	Rabbit
Clonality:	Polyclonal
Conjugate:	This NOL3 antibody is un-conjugated
Application:	Western Blotting (WB), ELISA, Immunohistochemistry (IHC), Immunofluorescence (IF), Immunocytochemistry (ICC)

Product Details

Immunogen:	A synthesized peptide derived from human NOL3, corresponding to a region within C-terminal amino acids.
Isotype:	IgG
Specificity:	NOL3 Antibody detects endogenous levels of total NOL3.
Predicted Reactivity:	Pig
Purification:	The antiserum was purified by peptide affinity chromatography using SulfoLink™ Coupling Resin (Thermo Fisher Scientific).

Target Details

Target:	NOL3
---------	------

Target Details

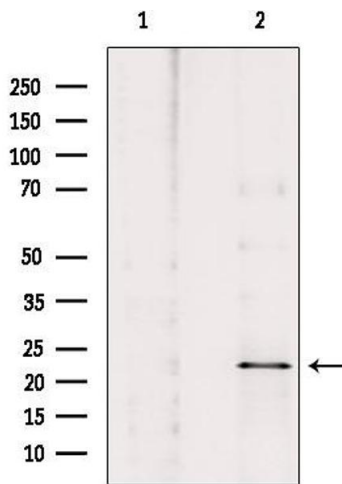
Alternative Name:	NOL3 (NOL3 Products)
Background:	Description: Isoform 1: May be involved in RNA splicing. Gene: NOL3
Molecular Weight:	23kDa
Gene ID:	8996
UniProt:	O60936

Application Details

Application Notes:	WB: 1:500-1:3000, IHC: 1:50-1:200, IF/ICC 1:100-1:500, ELISA(peptide) 1:20000-1:40000
Restrictions:	For Research Use only

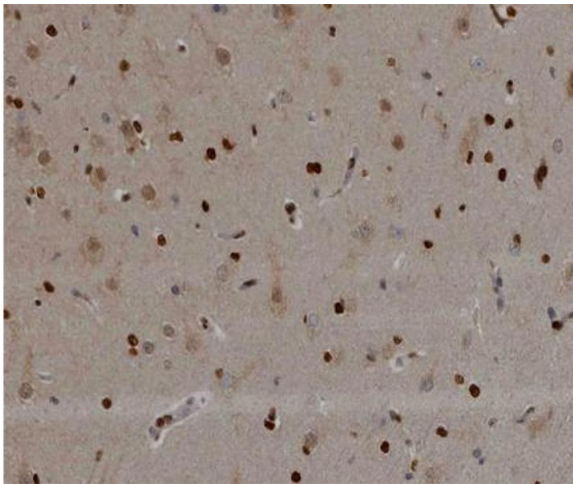
Handling

Format:	Liquid
Concentration:	1 mg/mL
Buffer:	Rabbit IgG in phosphate buffered saline , pH 7.4, 150 mM NaCl, 0.02 % sodium azide and 50 % glycerol.
Preservative:	Sodium azide
Precaution of Use:	This product contains Sodium azide: a POISONOUS AND HAZARDOUS SUBSTANCE which should be handled by trained staff only.
Storage:	-20 °C
Storage Comment:	Store at -20 °C. Stable for 12 months from date of receipt.
Expiry Date:	12 months



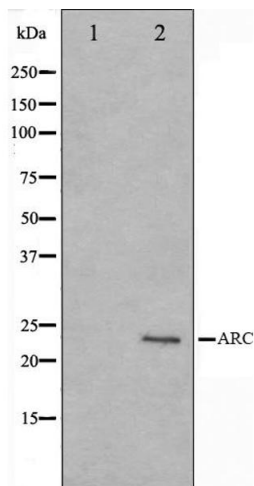
Western Blotting

Image 1. Western blot analysis of extracts from HepG2, using ARC Antibody. Lane 1 was treated with the blocking peptide.



Immunohistochemistry

Image 2. ABIN6266498 at 1/200 staining human brain tissue sections by IHC-P. The tissue was formaldehyde fixed and a heat mediated antigen retrieval step in citrate buffer was performed. The tissue was then blocked and incubated with the antibody for 1.5 hours at 22°C. An HRP conjugated goat anti-rabbit antibody was used as the secondary.



Western Blotting

Image 3. Western blot analysis on HeLa cell lysate using ARC Antibody, The lane on the left is treated with the antigen-specific peptide.

Please check the [product details page](#) for more images. Overall 4 images are available for ABIN6260017.