



[Go to Product page](#)

Datasheet for ABIN6260021
anti-ARF5 antibody (C-Term)

1 Image

Overview

| | |
|----------------------|--|
| Quantity: | 100 µL |
| Target: | ARF5 |
| Binding Specificity: | C-Term |
| Reactivity: | Human |
| Host: | Rabbit |
| Clonality: | Polyclonal |
| Conjugate: | This ARF5 antibody is un-conjugated |
| Application: | Western Blotting (WB), ELISA, Immunohistochemistry (IHC) |

Product Details

| | |
|-----------------------|---|
| Immunogen: | A synthesized peptide derived from human ARF5, corresponding to a region within C-terminal amino acids. |
| Isotype: | IgG |
| Specificity: | ARF5 Antibody detects endogenous levels of total ARF5. |
| Predicted Reactivity: | Pig,Zebrafish,Bovine,Horse,Sheep,Rabbit,Chicken |
| Purification: | The antiserum was purified by peptide affinity chromatography using SulfoLink™ Coupling Resin (Thermo Fisher Scientific). |

Target Details

| | |
|---------|------|
| Target: | ARF5 |
|---------|------|

Target Details

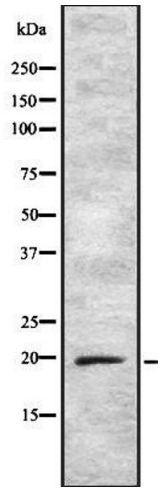
| | |
|-------------------|---|
| Alternative Name: | ARF5 (ARF5 Products) |
| Background: | Description: GTP-binding protein that functions as an allosteric activator of the cholera toxin catalytic subunit, an ADP-ribosyltransferase. Involved in protein trafficking, may modulate vesicle budding and uncoating within the Golgi apparatus. Gene: ARF5 |
| Molecular Weight: | 20 kDa |
| Gene ID: | 381 |
| UniProt: | P84085 |

Application Details

| | |
|--------------------|--|
| Application Notes: | WB 1:1000-3000, IHC 1:50-1:200, ELISA(peptide) 1:20000-1:40000 |
| Restrictions: | For Research Use only |

Handling

| | |
|--------------------|--|
| Format: | Liquid |
| Concentration: | 1 mg/mL |
| Buffer: | Rabbit IgG in phosphate buffered saline , pH 7.4, 150 mM NaCl, 0.02 % sodium azide and 50 % glycerol. |
| Preservative: | Sodium azide |
| Precaution of Use: | This product contains Sodium azide: a POISONOUS AND HAZARDOUS SUBSTANCE which should be handled by trained staff only. |
| Storage: | -20 °C |
| Storage Comment: | Store at -20 °C. Stable for 12 months from date of receipt. |
| Expiry Date: | 12 months |



Western Blotting

Image 1. Western blot analysis of ARF5 using K562 whole cell lysates