



[Go to Product page](#)

Datasheet for ABIN6260022  
**anti-ARF6 antibody (Internal Region)**

4 Images

Overview

Quantity:	100 µL
Target:	ARF6
Binding Specificity:	Internal Region
Reactivity:	Human, Rat, Mouse
Host:	Rabbit
Clonality:	Polyclonal
Application:	Western Blotting (WB), ELISA, Immunohistochemistry (IHC), Immunofluorescence (IF), Immunocytochemistry (ICC)

Product Details

Immunogen:	A synthesized peptide derived from human ARF6, corresponding to a region within the internal amino acids.
Isotype:	IgG
Specificity:	ARF6 Antibody detects endogenous levels of total ARF6.
Predicted Reactivity:	Pig,Bovine,Horse,Sheep,Rabbit,Dog,Chicken,Xenopus
Purification:	The antiserum was purified by peptide affinity chromatography using SulfoLink™ Coupling Resin (Thermo Fisher Scientific).

Target Details

Target:	ARF6
Alternative Name:	ARF6 ( <a href="#">ARF6 Products</a> )

## Target Details

---

**Background:** Description: GTP-binding protein involved in protein trafficking that regulates endocytic recycling and cytoskeleton remodeling (PubMed:11266366, PubMed:21170023, PubMed:16737952, PubMed:7589240, PubMed:18400762). Required for normal completion of mitotic cytokinesis (By similarity). Plays a role in the reorganization of the actin cytoskeleton and the formation of stress fibers (By similarity). May also modulate vesicle budding and uncoating within the Golgi apparatus. Involved in the regulation of dendritic spine development, contributing to the regulation of dendritic branching and filopodia extension (PubMed:14978216). Plays an important role in membrane trafficking, during junctional remodeling and epithelial polarization. Regulates surface levels of adherens junction proteins such as CDH1 (By similarity).

Gene: ARF6

---

**Molecular Weight:** 20kDa

---

**Gene ID:** 382

---

**UniProt:** [P62330](#)

---

**Pathways:** [Steroid Hormone Mediated Signaling Pathway](#), [Regulation of Actin Filament Polymerization](#), [SARS-CoV-2 Protein Interactome](#)

## Application Details

---

**Application Notes:** WB 1:500-1:2000, IHC 1:50-1:200, IF/ICC 1:100-1:500, ELISA(peptide) 1:20000-1:40000

---

**Restrictions:** For Research Use only

## Handling

---

**Format:** Liquid

---

**Concentration:** 1 mg/mL

---

**Buffer:** Rabbit IgG in phosphate buffered saline , pH 7.4, 150 mM NaCl, 0.02 % sodium azide and 50 % glycerol.

---

**Preservative:** Sodium azide

---

**Precaution of Use:** This product contains Sodium azide: a POISONOUS AND HAZARDOUS SUBSTANCE which should be handled by trained staff only.

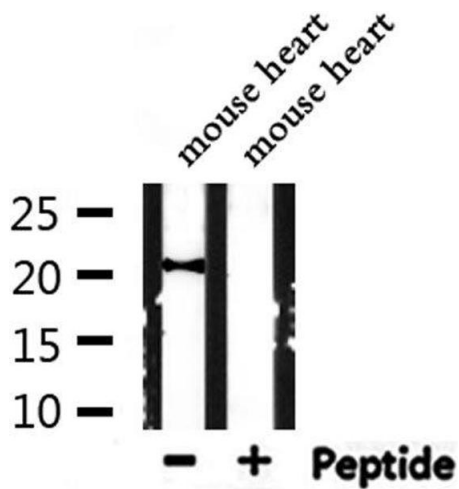
---

**Storage:** -20 °C

---

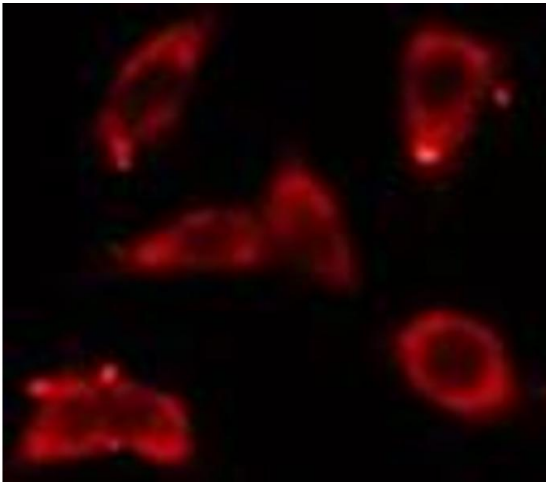
**Storage Comment:** Store at -20 °C. Stable for 12 months from date of receipt.

---



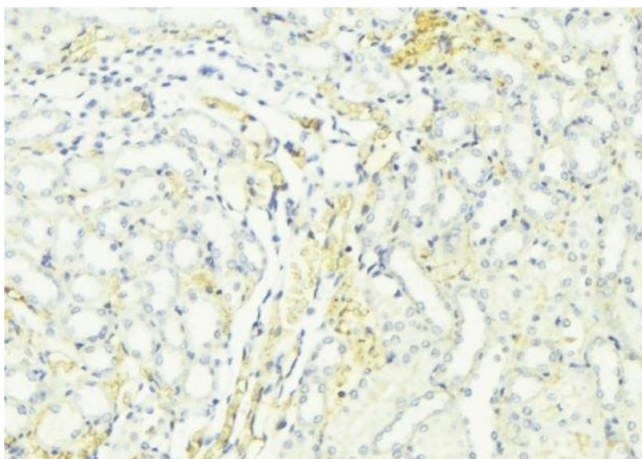
### Western Blotting

**Image 1.** Western blot analysis of extracts from mouse heart, using ARF6 Antibody.



### Immunofluorescence (fixed cells)

**Image 2.** ABIN6276440 staining COLO205 cells by IF/ICC. The sample were fixed with PFA and permeabilized in 0.1% Triton X-100, then blocked in 10% serum for 45 minutes at 25°C. The primary antibody was diluted at 1/200 and incubated with the sample for 1 hour at 37°C. An Alexa Fluor 594 conjugated goat anti-rabbit IgG (H+L) antibody (Cat.# S0006), diluted at 1/600, was used as secondary antibody



### Immunohistochemistry

**Image 3.** ABIN6276440 at 1/100 staining Mouse kidney tissue by IHC-P. The sample was formaldehyde fixed and a heat mediated antigen retrieval step in citrate buffer was performed. The sample was then blocked and incubated with the antibody for 1.5 hours at 22°C. An HRP conjugated goat anti-rabbit antibody was used as the secondary

Please check the [product details page](#) for more images. Overall 4 images are available for ABIN6260022.