

Datasheet for ABIN6260030
anti-ARHGDI A antibody (N-Term)

4 Images

[Go to Product page](#)

Overview

Quantity:	100 µL
Target:	ARHGDI A
Binding Specificity:	N-Term
Reactivity:	Human, Mouse, Rat
Host:	Rabbit
Clonality:	Polyclonal
Conjugate:	This ARHGDI A antibody is un-conjugated
Application:	Western Blotting (WB), ELISA, Immunohistochemistry (IHC), Immunofluorescence (IF), Immunocytochemistry (ICC)

Product Details

Immunogen:	A synthesized peptide derived from human ARHGDI A, corresponding to a region within N-terminal amino acids.
Isotype:	IgG
Specificity:	ARHGDI A Antibody detects endogenous levels of total ARHGDI A.
Predicted Reactivity:	Pig,Bovine,Horse,Sheep,Dog,Chicken
Purification:	The antiserum was purified by peptide affinity chromatography using SulfoLink™ Coupling Resin (Thermo Fisher Scientific).

Target Details

Target:	ARHGDI A
---------	----------

Target Details

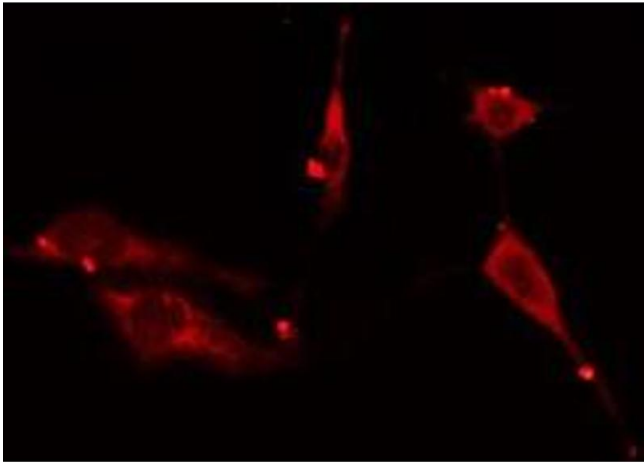
Alternative Name:	ARHGDI A (ARHGDI A Products)
Background:	<p>Description: Controls Rho proteins homeostasis. Regulates the GDP/GTP exchange reaction of the Rho proteins by inhibiting the dissociation of GDP from them, and the subsequent binding of GTP to them. Retains Rho proteins such as CDC42, RAC1 and RHOA in an inactive cytosolic pool, regulating their stability and protecting them from degradation. Actively involved in the recycling and distribution of activated Rho GTPases in the cell, mediates extraction from membranes of both inactive and activated molecules due its exceptionally high affinity for prenylated forms. Through the modulation of Rho proteins, may play a role in cell motility regulation. In glioma cells, inhibits cell migration and invasion by mediating the signals of SEMA5A and PLXNB3 that lead to inactivation of RAC1.</p> <p>Gene: ARHGDI A</p>
Molecular Weight:	28kDa
Gene ID:	396
UniProt:	P52565
Pathways:	Neurotrophin Signaling Pathway

Application Details

Application Notes:	WB 1:500-1:2000, IHC 1:50-1:200, IF/ICC 1:100-1:500, ELISA(peptide) 1:20000-1:40000
Restrictions:	For Research Use only

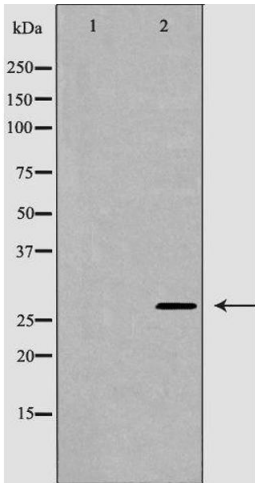
Handling

Format:	Liquid
Concentration:	1 mg/mL
Buffer:	Rabbit IgG in phosphate buffered saline , pH 7.4, 150 mM NaCl, 0.02 % sodium azide and 50 % glycerol.
Preservative:	Sodium azide
Precaution of Use:	This product contains Sodium azide: a POISONOUS AND HAZARDOUS SUBSTANCE which should be handled by trained staff only.
Storage:	-20 °C
Storage Comment:	Store at -20 °C. Stable for 12 months from date of receipt.



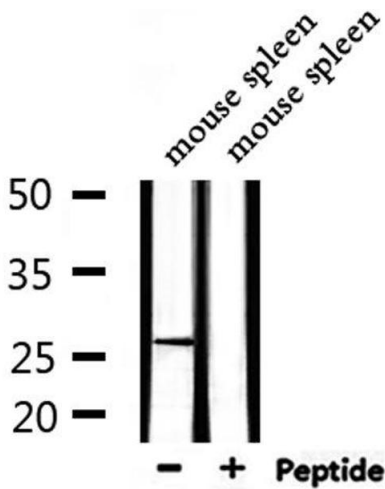
Immunofluorescence (fixed cells)

Image 1. ABIN6276614 staining HuvEc cells by IF/ICC. The sample were fixed with PFA and permeabilized in 0.1% Triton X-100, then blocked in 10% serum for 45 minutes at 25°C. The primary antibody was diluted at 1/200 and incubated with the sample for 1 hour at 37°C. An Alexa Fluor 594 conjugated goat anti-rabbit IgG (H+L) antibody (Cat.# S0006), diluted at 1/600, was used as secondary antibody



Western Blotting

Image 2. Western blot analysis of Hela whole cell lysates, using ARHGDIA Antibody. The lane on the left is treated with the antigen-specific peptide.



Western Blotting

Image 3. Western blot analysis of extracts from mouse spleen, using ARHGDIA Antibody.

Please check the [product details page](#) for more images. Overall 4 images are available for ABIN6260030.