

Datasheet for ABIN6260031
anti-ARHGDIB antibody (N-Term)

3 Images

[Go to Product page](#)

Overview

Quantity:	100 µL
Target:	ARHGDIB
Binding Specificity:	N-Term
Reactivity:	Human, Mouse, Rat
Host:	Rabbit
Clonality:	Polyclonal
Conjugate:	This ARHGDIB antibody is un-conjugated
Application:	Western Blotting (WB), Immunohistochemistry (IHC), Immunofluorescence (IF), Immunocytochemistry (ICC)

Product Details

Immunogen:	A synthesized peptide derived from human ARHGDIB, corresponding to a region within N-terminal amino acids.
Isotype:	IgG
Specificity:	ARHGDIB Antibody detects endogenous levels of total ARHGDIB.
Predicted Reactivity:	Pig,Bovine,Horse,Sheep,Rabbit,Dog,Chicken,Xenopus
Purification:	The antiserum was purified by peptide affinity chromatography using SulfoLink™ Coupling Resin (Thermo Fisher Scientific).

Target Details

Target:	ARHGDIB
---------	---------

Target Details

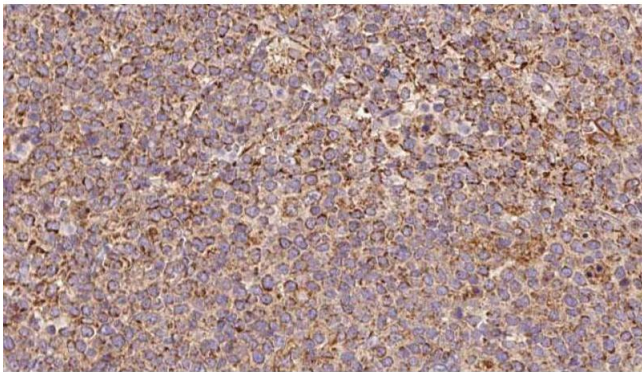
Alternative Name:	ARHGDIB (ARHGDIB Products)
Background:	Description: Regulates the GDP/GTP exchange reaction of the Rho proteins by inhibiting the dissociation of GDP from them, and the subsequent binding of GTP to them (PubMed:8356058, PubMed:7512369). Regulates reorganization of the actin cytoskeleton mediated by Rho family members (PubMed:8262133). Gene: ARHGDIB
Molecular Weight:	27 kDa
Gene ID:	397
UniProt:	P52566
Pathways:	Caspase Cascade in Apoptosis

Application Details

Application Notes:	WB 1:500-1:2000, IHC 1:50-1:200, IF/ICC 1:100-1:500
Restrictions:	For Research Use only

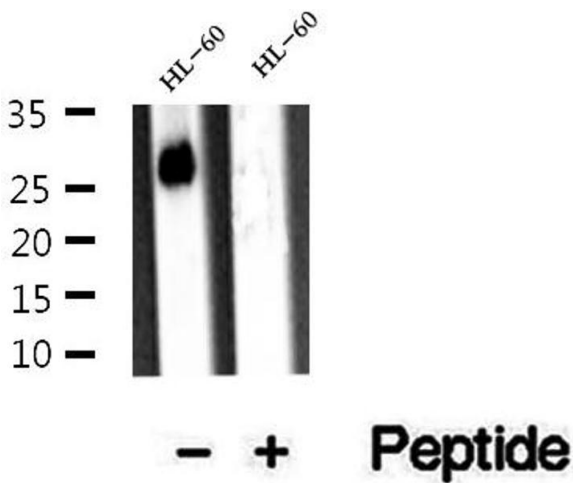
Handling

Format:	Liquid
Concentration:	1 mg/mL
Buffer:	Rabbit IgG in phosphate buffered saline , pH 7.4, 150 mM NaCl, 0.02 % sodium azide and 50 % glycerol.
Preservative:	Sodium azide
Precaution of Use:	This product contains Sodium azide: a POISONOUS AND HAZARDOUS SUBSTANCE which should be handled by trained staff only.
Storage:	-20 °C
Storage Comment:	Store at -20 °C. Stable for 12 months from date of receipt.
Expiry Date:	12 months



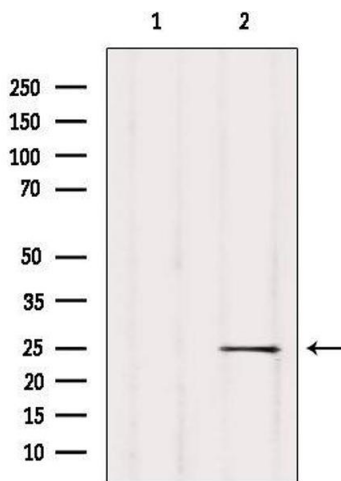
Immunohistochemistry

Image 1. ABIN6273193 at 1/100 staining Human lymph cancer tissue by IHC-P. The sample was formaldehyde fixed and a heat mediated antigen retrieval step in citrate buffer was performed. The sample was then blocked and incubated with the antibody for 1.5 hours at 22°C. An HRP conjugated goat anti-rabbit antibody was used as the secondary.



Western Blotting

Image 2. Western blot analysis of extracts of HL-60 cells, using ARHGDIB antibody.



Western Blotting

Image 3. Western blot analysis of extracts from Mouse lung, using ARHGDIB Antibody. The lane on the left was treated with blocking peptide.