

Datasheet for ABIN6260040
anti-ARL3 antibody (C-Term)[Go to Product page](#)

2 Images

Overview

Quantity:	100 µL
Target:	ARL3
Binding Specificity:	C-Term
Reactivity:	Human, Mouse, Rat
Host:	Rabbit
Clonality:	Polyclonal
Conjugate:	This ARL3 antibody is un-conjugated
Application:	Western Blotting (WB)

Product Details

Immunogen:	A synthesized peptide derived from human ARL3, corresponding to a region within C-terminal amino acids.
Isotype:	IgG
Specificity:	ARL3 Antibody detects endogenous levels of total ARL3.
Predicted Reactivity:	Pig,Zebrafish,Bovine,Horse,Sheep,Rabbit,Dog,Chicken,Xenopus
Purification:	The antiserum was purified by peptide affinity chromatography using SulfoLink™ Coupling Resin (Thermo Fisher Scientific).

Target Details

Target:	ARL3
---------	------

Target Details

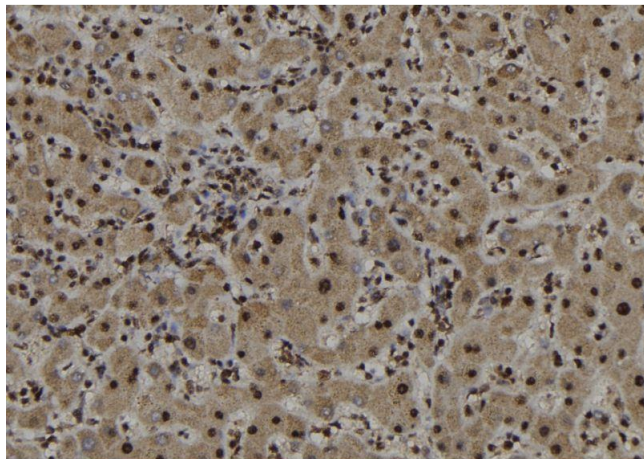
Alternative Name:	ARL3 (ARL3 Products)
Background:	<p>Description: Small GTP-binding protein which cycles between an inactive GDP-bound and an active GTP-bound form, and the rate of cycling is regulated by guanine nucleotide exchange factors (GEF) and GTPase-activating proteins (GAP). Required for normal cytokinesis and cilia signaling. Requires assistance from GTPase-activating proteins (GAPs) like RP2 and PDE6D, in order to cycle between inactive GDP-bound and active GTP-bound forms. Required for targeting proteins such as NPHP3 to the ciliary membrane by releasing myristoylated NPHP3 from UNC119B cargo adapter into the cilium. Does not act as an allosteric activator of the cholera toxin catalytic subunit.</p> <p>Gene: ARL3</p>
Molecular Weight:	20 kDa
Gene ID:	403
UniProt:	P36405

Application Details

Application Notes:	WB 1:500-1:2000
Restrictions:	For Research Use only

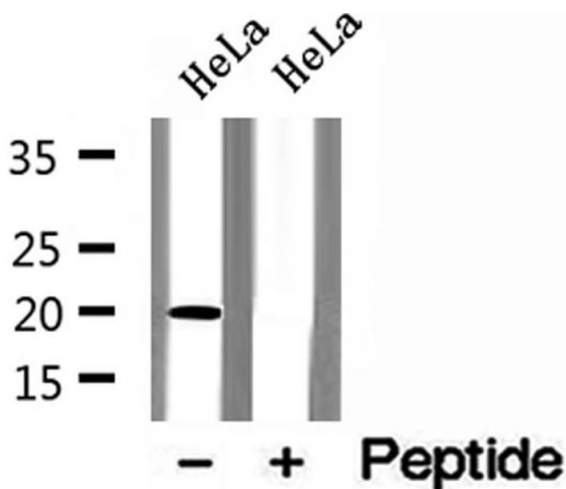
Handling

Format:	Liquid
Concentration:	1 mg/mL
Buffer:	Rabbit IgG in phosphate buffered saline , pH 7.4, 150 mM NaCl, 0.02 % sodium azide and 50 % glycerol.
Preservative:	Sodium azide
Precaution of Use:	This product contains Sodium azide: a POISONOUS AND HAZARDOUS SUBSTANCE which should be handled by trained staff only.
Storage:	-20 °C
Storage Comment:	Store at -20 °C. Stable for 12 months from date of receipt.
Expiry Date:	12 months



Immunohistochemistry

Image 1. ABIN6272987 at 1/100 staining Human liver tissue by IHC-P. The sample was formaldehyde fixed and a heat mediated antigen retrieval step in citrate buffer was performed. The sample was then blocked and incubated with the antibody for 1.5 hours at 22°C. An HRP conjugated goat anti-rabbit antibody was used as the secondary.



Western Blotting

Image 2. Western blot analysis of extracts of HeLa cells, using ARL3 antibody.