



[Go to Product page](#)

Datasheet for ABIN6260054  
**anti-ARRDC1 antibody (C-Term)**

2 Images

Overview

|                      |  |
|----------------------|--|
| Quantity:            | 100 µL   |
| Target:              | ARRDC1   |
| Binding Specificity: | C-Term   |
| Reactivity:          | Human, Rat   |
| Host:                | Rabbit   |
| Clonality:           | Polyclonal   |
| Conjugate:           | This ARRDC1 antibody is un-conjugated  |
| Application:         | Western Blotting (WB), ELISA, Immunofluorescence (IF), Immunohistochemistry (IHC), Immunocytochemistry (ICC) |

Product Details

|                       |   |
|-----------------------|---|
| Immunogen:            | A synthesized peptide derived from human Arrdc1, corresponding to a region within C-terminal amino acids.                 |
| Isotype:              | IgG   |
| Specificity:          | Arrdc1 Antibody detects endogenous levels of total Arrdc1.  |
| Predicted Reactivity: | Pig,Bovine,Rabbit,Dog,Chicken,Xenopus   |
| Purification:         | The antiserum was purified by peptide affinity chromatography using SulfoLink™ Coupling Resin (Thermo Fisher Scientific). |

Target Details

|         |        |
|---------|--------|
| Target: | ARRDC1 |
|---------|--------|

## Target Details

---

Alternative Name: [ARRDC1 \(ARRDC1 Products\)](#)

---

Background: Description: Functions as an adapter recruiting ubiquitin-protein ligases to their specific substrates (PubMed:23886940, PubMed:27462458). Through an ubiquitination-dependent mechanism plays for instance a role in the incorporation of SLC11A2 into extracellular vesicles (PubMed:27462458). More generally, plays a role in the extracellular transport of proteins between cells through the release in the extracellular space of microvesicles (PubMed:22315426). By participating to the ITCH-mediated ubiquitination and subsequent degradation of NOTCH1, negatively regulates the NOTCH signaling pathway (PubMed:23886940).

Gene: ARRDC1

---

Molecular Weight: 48kDa

---

Gene ID: 92714

---

UniProt: [Q8N5I2](#)

---

## Application Details

---

Application Notes: WB 1:1000, IF/ICC 1:100-1:500, IHC 1:50-1:200, ELISA(peptide) 1:20000-1:40000

---

Restrictions: For Research Use only

---

## Handling

---

Format: Liquid

---

Concentration: 1 mg/mL

---

Buffer: Rabbit IgG in phosphate buffered saline , pH 7.4, 150 mM NaCl, 0.02 % sodium azide and 50 % glycerol.

---

Preservative: Sodium azide

---

Precaution of Use: This product contains Sodium azide: a POISONOUS AND HAZARDOUS SUBSTANCE which should be handled by trained staff only.

---

Storage: -20 °C

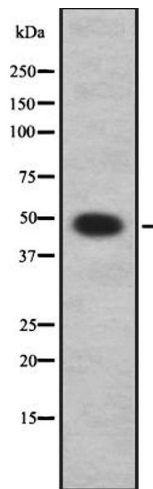
---

Storage Comment: Store at -20 °C. Stable for 12 months from date of receipt.

---

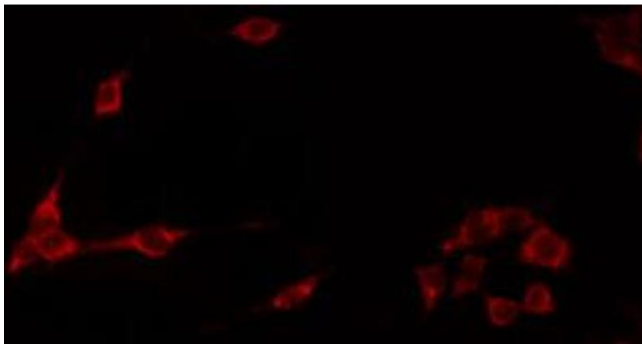
Expiry Date: 12 months

---



### Western Blotting

**Image 1.** Western blot analysis of Arrdc1 using Jurkat whole cell lysates



### Immunofluorescence (fixed cells)

**Image 2.** ABIN6272249 staining Hela by IF/ICC. The sample were fixed with PFA and permeabilized in 0.1% Triton X-100, then blocked in 10% serum for 45 minutes at 25°C. The primary antibody was diluted at 1/200 and incubated with the sample for 1 hour at 37°C. An Alexa Fluor 594 conjugated goat anti-rabbit IgG (H+L) Ab, diluted at 1/600, was used as the secondary antibody.