



[Go to Product page](#)

Datasheet for ABIN6260061
anti-Arylsulfatase H antibody

2 Images

Overview

Quantity:	100 µL
Target:	Arylsulfatase H (ARSH)
Reactivity:	Human, Mouse
Host:	Rabbit
Clonality:	Polyclonal
Conjugate:	This Arylsulfatase H antibody is un-conjugated
Application:	ELISA, Western Blotting (WB)

Product Details

Immunogen:	A synthesized peptide derived from human ARSH
Isotype:	IgG
Specificity:	ARSH Antibody detects endogenous levels of total ARSH
Cross-Reactivity:	Human, Mouse (Murine)
Purification:	The antiserum was purified by peptide affinity chromatography using SulfoLink™ Coupling Resin (Thermo Fisher Scientific).

Target Details

Target:	Arylsulfatase H (ARSH)
Alternative Name:	ARSH (ARSH Products)
Background:	Description: Ca ²⁺

Target Details

Gene: ARSH

Molecular Weight: 64 kDa

Gene ID: 347527

UniProt: [Q5FYA8](#)

Application Details

Application Notes: WB 1:1000-3000

Restrictions: For Research Use only

Handling

Format: Liquid

Concentration: 1 mg/mL

Buffer: Rabbit IgG in phosphate buffered saline , pH 7.4, 150 mM NaCl, 0.02 % sodium azide and 50 % glycerol.

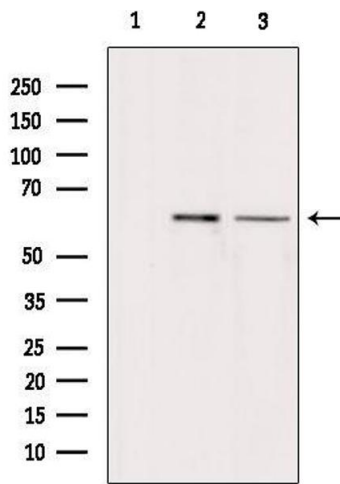
Preservative: Sodium azide

Precaution of Use: This product contains Sodium azide: a POISONOUS AND HAZARDOUS SUBSTANCE which should be handled by trained staff only.

Storage: -20 °C

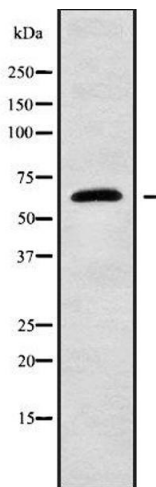
Storage Comment: Store at -20 °C.Stable for 12 months from date of receipt

Expiry Date: 12 months



Western Blotting

Image 1. Western blot analysis of extracts from various samples, using ARSH Antibody. Lane 1: HepG2 treated with blocking peptide. Lane 2: HepG2; Lane 3: mouse brain;



Western Blotting

Image 2. Western blot analysis of ARSH using HeLa whole cell lysates