

Datasheet for ABIN6260062

**anti-ARSJ antibody (Internal Region)**[Go to Product page](#)**2** Images

## Overview

Quantity:	100 µL
Target:	ARSJ
Binding Specificity:	Internal Region
Reactivity:	Human, Mouse, Rat
Host:	Rabbit
Clonality:	Polyclonal
Conjugate:	This ARSJ antibody is un-conjugated
Application:	Western Blotting (WB), ELISA

## Product Details

Immunogen:	A synthesized peptide derived from human ARSJ, corresponding to a region within the internal amino acids.
Isotype:	IgG
Specificity:	ARSJ Antibody detects endogenous levels of total ARSJ.
Predicted Reactivity:	Pig,Bovine,Horse,Sheep,Rabbit,Dog,Chicken,Xenopus
Purification:	The antiserum was purified by peptide affinity chromatography using SulfoLink™ Coupling Resin (Thermo Fisher Scientific).

## Target Details

Target:	ARSJ
---------	------

## Target Details

Alternative Name: ARSJ ([ARSJ Products](#))

Background: Description: Ca<sup>2+</sup>  
Gene: ARSJ

Molecular Weight: 67 kDa

Gene ID: 79642

UniProt: [Q5FYB0](#)

## Application Details

Application Notes: WB 1:1000-3000, ELISA(peptide) 1:20000-1:40000

Restrictions: For Research Use only

## Handling

Format: Liquid

Concentration: 1 mg/mL

Buffer: Rabbit IgG in phosphate buffered saline , pH 7.4, 150 mM NaCl, 0.02 % sodium azide and 50 % glycerol.

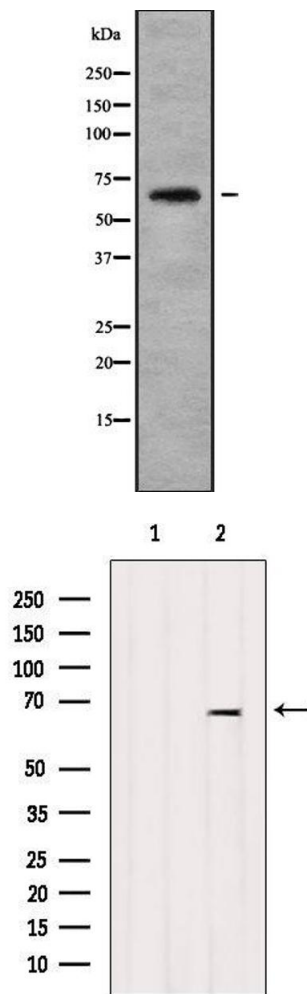
Preservative: Sodium azide

Precaution of Use: This product contains Sodium azide: a POISONOUS AND HAZARDOUS SUBSTANCE which should be handled by trained staff only.

Storage: -20 °C

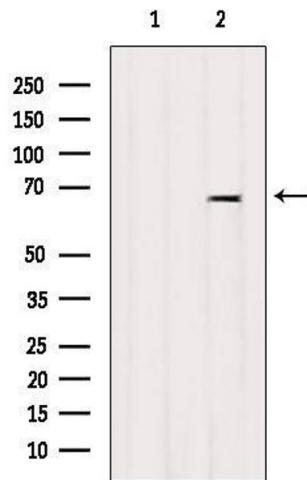
Storage Comment: Store at -20 °C. Stable for 12 months from date of receipt.

Expiry Date: 12 months



Western Blotting

**Image 1.** Western blot analysis of ARSJ using HeLa whole cell lysates



Western Blotting

**Image 2.** Western blot analysis of extracts from Mouse lung, using ARSJ Antibody. The lane on the left was treated with blocking peptide.