

Datasheet for ABIN6260071  
**anti-SLC10A2 antibody (C-Term)**[Go to Product page](#)

## 3 Images

## Overview

Quantity:	100 µL
Target:	SLC10A2
Binding Specificity:	C-Term
Reactivity:	Human, Mouse
Host:	Rabbit
Clonality:	Polyclonal
Conjugate:	This SLC10A2 antibody is un-conjugated
Application:	Western Blotting (WB), Immunohistochemistry (IHC)

## Product Details

Immunogen:	A synthesized peptide derived from human ASBT, corresponding to a region within C-terminal amino acids.
Isotype:	IgG
Specificity:	ASBT Antibody detects endogenous levels of total ASBT.
Purification:	The antiserum was purified by peptide affinity chromatography using SulfoLink™ Coupling Resin (Thermo Fisher Scientific).

## Target Details

Target:	SLC10A2
Alternative Name:	SLC10A2 ( <a href="#">SLC10A2 Products</a> )

## Target Details

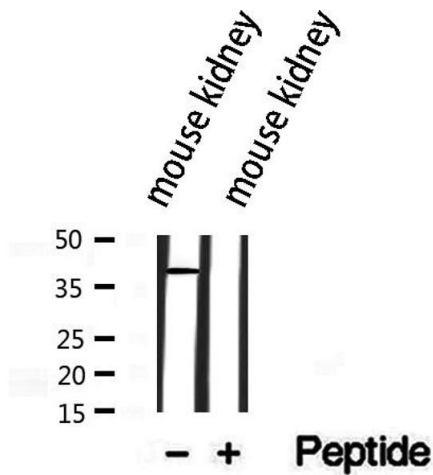
Background:	Description: Plays a critical role in the sodium-dependent reabsorption of bile acids from the lumen of the small intestine. Plays a key role in cholesterol metabolism. Gene: SLC10A2
Molecular Weight:	38-40 kDa
Gene ID:	6555
UniProt:	<a href="#">Q12908</a>

## Application Details

Application Notes:	WB 1:500-1:2000, IHC 1:50-1:200
Restrictions:	For Research Use only

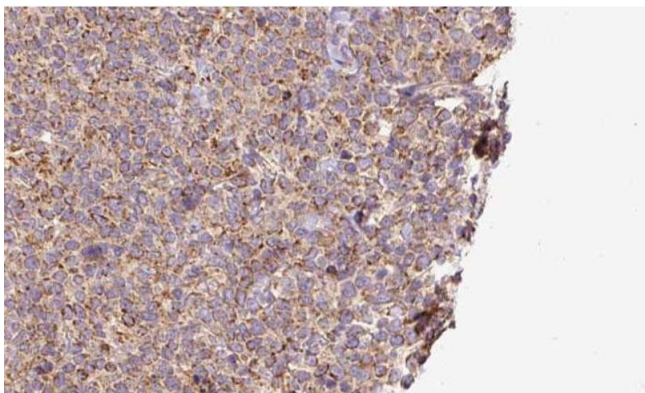
## Handling

Format:	Liquid
Concentration:	1 mg/mL
Buffer:	Rabbit IgG in phosphate buffered saline , pH 7.4, 150 mM NaCl, 0.02 % sodium azide and 50 % glycerol.
Preservative:	Sodium azide
Precaution of Use:	This product contains Sodium azide: a POISONOUS AND HAZARDOUS SUBSTANCE which should be handled by trained staff only.
Storage:	-20 °C
Storage Comment:	Store at -20 °C. Stable for 12 months from date of receipt.
Expiry Date:	12 months



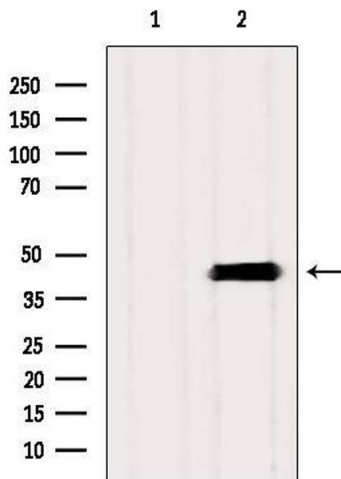
Western Blotting

**Image 1.** Western blot analysis of extracts from mouse kidney, using ASBT antibody.



Immunohistochemistry

**Image 2.** ABIN6273195 at 1/100 staining Human lymph cancer tissue by IHC-P. The sample was formaldehyde fixed and a heat mediated antigen retrieval step in citrate buffer was performed. The sample was then blocked and incubated with the antibody for 1.5 hours at 22°C. An HRP conjugated goat anti-rabbit antibody was used as the secondary.



Western Blotting

**Image 3.** Western blot analysis of extracts from Mouse brain, using ASBT Antibody. The lane on the left was treated with blocking peptide.