

Datasheet for ABIN6260072

anti-PYDC1 antibody**2** Images[Go to Product page](#)

Overview

| | |
|--------------|--|
| Quantity: | 100 µL |
| Target: | PYDC1 |
| Reactivity: | Human, Mouse, Rat |
| Host: | Rabbit |
| Clonality: | Polyclonal |
| Conjugate: | This PYDC1 antibody is un-conjugated |
| Application: | Western Blotting (WB), ELISA, Immunohistochemistry (IHC) |

Product Details

| | |
|-------------------|---|
| Immunogen: | A synthesized peptide derived from human ASC2 |
| Isotype: | IgG |
| Specificity: | ASC2 Antibody detects endogenous levels of total ASC2 |
| Cross-Reactivity: | Human, Mouse (Murine), Rat (Rattus) |
| Purification: | The antiserum was purified by peptide affinity chromatography using SulfoLink™ Coupling Resin (Thermo Fisher Scientific). |

Target Details

| | |
|-------------------|---|
| Target: | PYDC1 |
| Alternative Name: | ASC2 (PYDC1 Products) |
| Background: | Description: Associates with PYCARD/ASC and modulates its ability to collaborate with |

Target Details

MEFV/pyrin and NLRP3/cryopyrin in NF-kappa-B and pro-caspase-1 activation. Suppresses kinase activity of NF-kappa-B inhibitor kinase (IKK) complex, expression of NF-kappa-B inducible genes and inhibits NF-kappa-B activation by cytokines and LPS.
Gene: PYDC1

Molecular Weight: 10 kDa

Gene ID: 260434

UniProt: [Q8WXC3](#)

Application Details

Application Notes: WB 1:1000-3000 IHC 1:200

Restrictions: For Research Use only

Handling

Format: Liquid

Concentration: 1 mg/mL

Buffer: Rabbit IgG in phosphate buffered saline , pH 7.4, 150 mM NaCl, 0.02 % sodium azide and 50 % glycerol.

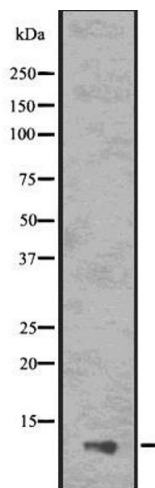
Preservative: Sodium azide

Precaution of Use: This product contains Sodium azide: a POISONOUS AND HAZARDOUS SUBSTANCE which should be handled by trained staff only.

Storage: -20 °C

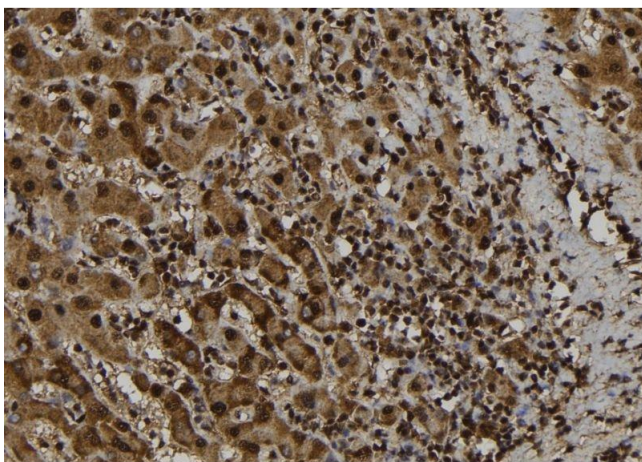
Storage Comment: Store at -20 °C.Stable for 12 months from date of receipt

Expiry Date: 12 months



Western Blotting

Image 1. Western blot analysis of ASC2 using HepG2 whole cell lysates



Immunohistochemistry

Image 2. ABIN6277753 at 1/100 staining Human liver tissue by IHC-P. The sample was formaldehyde fixed and a heat mediated antigen retrieval step in citrate buffer was performed. The sample was then blocked and incubated with the antibody for 1.5 hours at 22°C. An HRP conjugated goat anti-rabbit antibody was used as the secondary