

Datasheet for ABIN6260081

anti-Asparagine Synthetase antibody (N-Term)**2** Images[Go to Product page](#)

Overview

Quantity:	100 µL
Target:	Asparagine Synthetase (ASNS)
Binding Specificity:	N-Term
Reactivity:	Human, Mouse, Rat
Host:	Rabbit
Clonality:	Polyclonal
Conjugate:	This Asparagine Synthetase antibody is un-conjugated
Application:	Western Blotting (WB), ELISA, Immunohistochemistry (IHC)

Product Details

Immunogen:	A synthesized peptide derived from human Asparagine synthetase, corresponding to a region within N-terminal amino acids.
Isotype:	IgG
Specificity:	Asparagine synthetase Antibody detects endogenous levels of total Asparagine synthetase.
Predicted Reactivity:	Pig,Zebrafish,Bovine,Rabbit,Dog,Chicken,Xenopus
Purification:	The antiserum was purified by peptide affinity chromatography using SulfoLink™ Coupling Resin (Thermo Fisher Scientific).

Target Details

Target:	Asparagine Synthetase (ASNS)
---------	------------------------------

Target Details

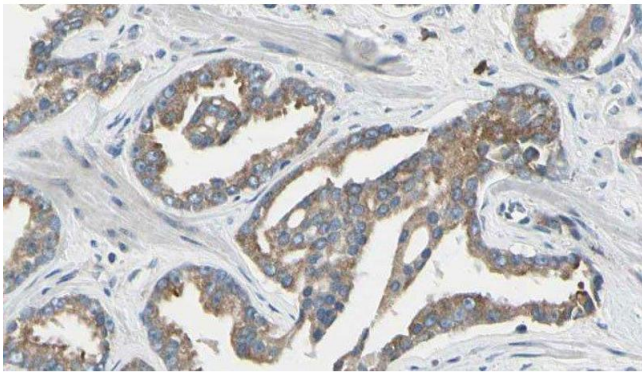
Alternative Name:	ASNS (ASNS Products)
Background:	Description: ATP + L-aspartate + L-glutamine + H2O = AMP + diphosphate + L-asparagine + L-glutamate. Gene: ASNS
Molecular Weight:	64kDa
Gene ID:	440
UniProt:	P08243
Pathways:	ER-Nucleus Signaling

Application Details

Application Notes:	WB 1:500-1:2000, IHC 1:50-1:200, ELISA(peptide) 1:20000-1:40000
Restrictions:	For Research Use only

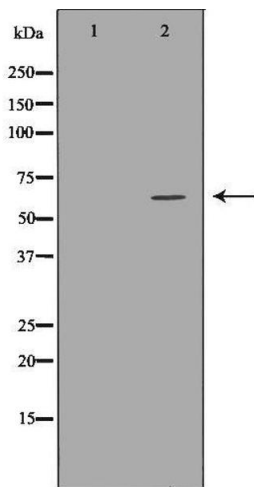
Handling

Format:	Liquid
Concentration:	1 mg/mL
Buffer:	Rabbit IgG in phosphate buffered saline , pH 7.4, 150 mM NaCl, 0.02 % sodium azide and 50 % glycerol.
Preservative:	Sodium azide
Precaution of Use:	This product contains Sodium azide: a POISONOUS AND HAZARDOUS SUBSTANCE which should be handled by trained staff only.
Storage:	-20 °C
Storage Comment:	Store at -20 °C. Stable for 12 months from date of receipt.
Expiry Date:	12 months



Immunohistochemistry

Image 1. ABIN6277640 at 1/100 staining Human prostate tissue by IHC-P. The sample was formaldehyde fixed and a heat mediated antigen retrieval step in citrate buffer was performed. The sample was then blocked and incubated with the antibody for 1.5 hours at 22°C. An HRP conjugated goat anti-rabbit antibody was used as the secondary



Western Blotting

Image 2. Western blot analysis of K562 whole cell lysates, using ASNS Antibody. The lane on the left is treated with the antigen-specific peptide.