

Datasheet for ABIN6260133
anti-ATP6V1A antibody (C-Term)

3 Images

[Go to Product page](#)

Overview

Quantity:	100 µL
Target:	ATP6V1A
Binding Specificity:	C-Term
Reactivity:	Human, Mouse, Rat
Host:	Rabbit
Clonality:	Polyclonal
Conjugate:	This ATP6V1A antibody is un-conjugated
Application:	Western Blotting (WB), Immunohistochemistry (IHC)

Product Details

Immunogen:	A synthesized peptide derived from human ATP6V1A, corresponding to a region within C-terminal amino acids.
Isotype:	IgG
Specificity:	ATP6V1A Antibody detects endogenous levels of total ATP6V1A.
Predicted Reactivity:	Pig,Bovine,Horse,Sheep,Dog,Chicken,Xenopus
Purification:	The antiserum was purified by peptide affinity chromatography using SulfoLink™ Coupling Resin (Thermo Fisher Scientific).

Target Details

Target:	ATP6V1A
---------	---------

Target Details

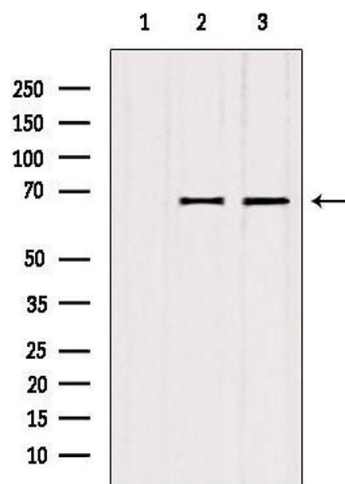
Alternative Name:	ATP6V1A (ATP6V1A Products)
Background:	<p>Description: Catalytic subunit of the peripheral V1 complex of vacuolar ATPase. V-ATPase vacuolar ATPase is responsible for acidifying a variety of intracellular compartments in eukaryotic cells. In aerobic conditions, involved in intracellular iron homeostasis, thus triggering the activity of Fe²⁺ prolyl hydroxylase (PHD) enzymes, and leading to HIF1A hydroxylation and subsequent proteasomal degradation (PubMed:28296633).</p> <p>Gene: ATP6V1A</p>
Molecular Weight:	68 kDa
Gene ID:	523
UniProt:	P38606
Pathways:	Transition Metal Ion Homeostasis , Proton Transport , SARS-CoV-2 Protein Interactome

Application Details

Application Notes:	WB 1:500-1:2000, IHC 1:50-1:200
Restrictions:	For Research Use only

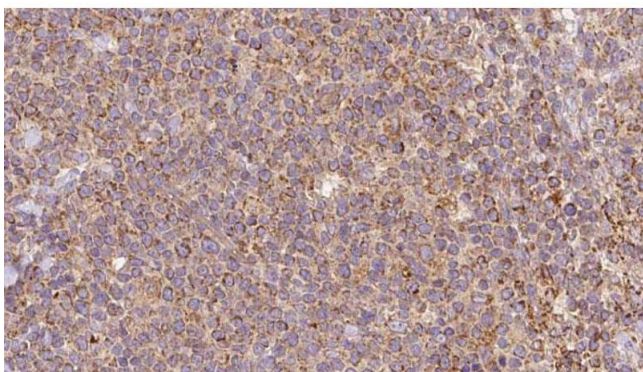
Handling

Format:	Liquid
Concentration:	1 mg/mL
Buffer:	Rabbit IgG in phosphate buffered saline , pH 7.4, 150 mM NaCl, 0.02 % sodium azide and 50 % glycerol.
Preservative:	Sodium azide
Precaution of Use:	This product contains Sodium azide: a POISONOUS AND HAZARDOUS SUBSTANCE which should be handled by trained staff only.
Storage:	-20 °C
Storage Comment:	Store at -20 °C. Stable for 12 months from date of receipt.
Expiry Date:	12 months



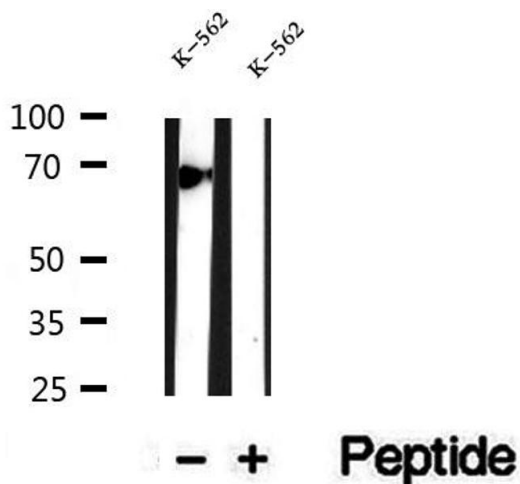
Western Blotting

Image 1. Western blot analysis of extracts from various samples, using ATP6V1A antibody. Lane 1: rat brain treated with blocking peptide. Lane 2: Rat brain; Lane 3: B16F10;



Immunohistochemistry

Image 2. ABIN6273197 at 1/100 staining Human lymph cancer tissue by IHC-P. The sample was formaldehyde fixed and a heat mediated antigen retrieval step in citrate buffer was performed. The sample was then blocked and incubated with the antibody for 1.5 hours at 22°C. An HRP conjugated goat anti-rabbit antibody was used as the secondary.



Western Blotting

Image 3. Western blot analysis of extracts of K-562 cells, using ATP6V1A antibody.