



[Go to Product page](#)

Datasheet for ABIN6260136  
**anti-ATP7A antibody (C-Term)**

2 Images

Overview

Quantity:	100 µL
Target:	ATP7A
Binding Specificity:	C-Term
Reactivity:	Human, Rat, Mouse
Host:	Rabbit
Clonality:	Polyclonal
Conjugate:	This ATP7A antibody is un-conjugated
Application:	Immunohistochemistry (IHC), Western Blotting (WB), ELISA, Immunofluorescence (IF), Immunocytochemistry (ICC)

Product Details

Immunogen:	A synthesized peptide derived from human ATP7A, corresponding to a region within C-terminal amino acids.
Isotype:	IgG
Specificity:	ATP7A Antibody detects endogenous levels of total ATP7A.
Predicted Reactivity:	Bovine,Horse,Sheep,Rabbit,Dog
Purification:	The antiserum was purified by peptide affinity chromatography using SulfoLink™ Coupling Resin (Thermo Fisher Scientific).

Target Details

Target:	ATP7A
---------	-------

## Target Details

---

Alternative Name:	ATP7A ( <a href="#">ATP7A Products</a> )
Background:	Description: May supply copper to copper-requiring proteins within the secretory pathway, when localized in the trans-Golgi network. Under conditions of elevated extracellular copper, it relocalized to the plasma membrane where it functions in the efflux of copper from cells. Gene: ATP7A
Molecular Weight:	163 kDa
Gene ID:	538
UniProt:	<a href="#">Q04656</a>
Pathways:	<a href="#">Transition Metal Ion Homeostasis</a> , <a href="#">Ribonucleoside Biosynthetic Process</a>

## Application Details

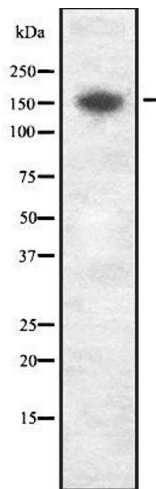
---

Application Notes:	WB 1:1000-3000, IHC 1:200, IF/ICC 1:100-1:500, ELISA(peptide) 1:20000-1:40000
Restrictions:	For Research Use only

## Handling

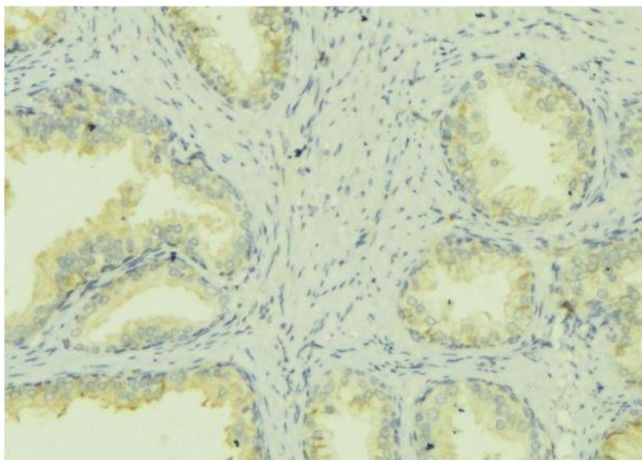
---

Format:	Liquid
Concentration:	1 mg/mL
Buffer:	Rabbit IgG in phosphate buffered saline , pH 7.4, 150 mM NaCl, 0.02 % sodium azide and 50 % glycerol.
Preservative:	Sodium azide
Precaution of Use:	This product contains Sodium azide: a POISONOUS AND HAZARDOUS SUBSTANCE which should be handled by trained staff only.
Storage:	-20 °C
Storage Comment:	Store at -20 °C. Stable for 12 months from date of receipt.
Expiry Date:	12 months



### Western Blotting

**Image 1.** Western blot analysis of ATP7A using LOVO whole cell lysates



### Immunohistochemistry

**Image 2.** ABIN6278425 at 1/100 staining Mouse colon tissue by IHC-P. The sample was formaldehyde fixed and a heat mediated antigen retrieval step in citrate buffer was performed. The sample was then blocked and incubated with the antibody for 1.5 hours at 22°C. An HRP conjugated goat anti-rabbit antibody was used as the secondary