



[Go to Product page](#)

Datasheet for ABIN6260151  
**anti-ATXN7L1 antibody**

2 Images

### Overview

|              |  |
|--------------|--|
| Quantity:    | 100 µL   |
| Target:      | ATXN7L1  |
| Reactivity:  | Human, Mouse   |
| Host:        | Rabbit   |
| Clonality:   | Polyclonal   |
| Conjugate:   | This ATXN7L1 antibody is un-conjugated                   |
| Application: | ELISA, Western Blotting (WB), Immunohistochemistry (IHC) |

### Product Details

|                   |   |
|-------------------|---|
| Immunogen:        | A synthesized peptide derived from human ATXN7L1  |
| Isotype:          | IgG   |
| Specificity:      | ATXN7L1 Antibody detects endogenous levels of total ATXN7L1   |
| Cross-Reactivity: | Human, Mouse (Murine)   |
| Purification:     | The antiserum was purified by peptide affinity chromatography using SulfoLink™ Coupling Resin (Thermo Fisher Scientific). |

### Target Details

|                   |  |
|-------------------|--|
| Target:           | ATXN7L1                                      |
| Alternative Name: | ATXN7L1 ( <a href="#">ATXN7L1 Products</a> ) |
| Background:       | Gene: ATXN7L1                                |

## Target Details

|                   |                        |
|-------------------|------------------------|
| Molecular Weight: | 92 kDa                 |
| Gene ID:          | 222255                 |
| UniProt:          | <a href="#">Q9ULK2</a> |

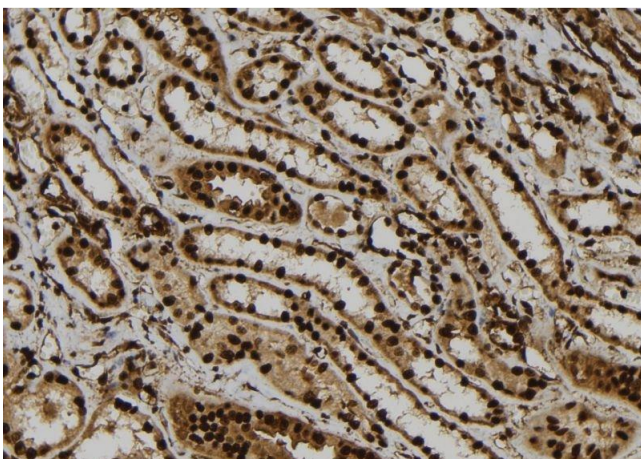
## Application Details

|                    |                          |
|--------------------|--------------------------|
| Application Notes: | WB 1:1000-3000 IHC 1:200 |
| Restrictions:      | For Research Use only    |

## Handling

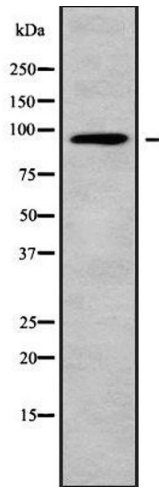
|                    |  |
|--------------------|--|
| Format:            | Liquid   |
| Concentration:     | 1 mg/mL  |
| Buffer:            | Rabbit IgG in phosphate buffered saline , pH 7.4, 150 mM NaCl, 0.02 % sodium azide and 50 % glycerol.                  |
| Preservative:      | Sodium azide   |
| Precaution of Use: | This product contains Sodium azide: a POISONOUS AND HAZARDOUS SUBSTANCE which should be handled by trained staff only. |
| Storage:           | -20 °C   |
| Storage Comment:   | Store at -20 °C.Stable for 12 months from date of receipt  |
| Expiry Date:       | 12 months  |

## Images



### Immunohistochemistry

**Image 1.** ABIN6279148 at 1/100 staining Human kidney tissue by IHC-P. The sample was formaldehyde fixed and a heat mediated antigen retrieval step in citrate buffer was performed. The sample was then blocked and incubated with the antibody for 1.5 hours at 22;ãC. An HRP conjugated goat anti-rabbit antibody was used as the secondary



### Western Blotting

**Image 2.** Western blot analysis of ATXN7L1 using HT29 whole cell lysates