



Datasheet for ABIN6260173
anti-B3GALT5 antibody (Internal Region)



[Go to Product page](#)

1 Image

Overview

Quantity:	100 µL
Target:	B3GALT5
Binding Specificity:	Internal Region
Reactivity:	Human
Host:	Rabbit
Clonality:	Polyclonal
Conjugate:	This B3GALT5 antibody is un-conjugated
Application:	Western Blotting (WB), ELISA

Product Details

Immunogen:	A synthesized peptide derived from human B3GALT5, corresponding to a region within the internal amino acids.
Isotype:	IgG
Specificity:	B3GALT5 Antibody detects endogenous levels of total B3GALT5.
Purification:	The antiserum was purified by peptide affinity chromatography using SulfoLink™ Coupling Resin (Thermo Fisher Scientific).

Target Details

Target:	B3GALT5
Alternative Name:	B3GALT5 (B3GALT5 Products)

Target Details

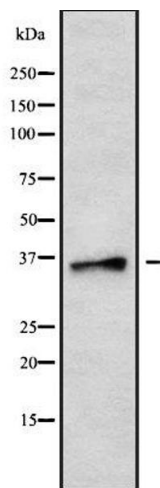
Background:	Description: Catalyzes the transfer of Gal to GlcNAc-based acceptors with a preference for the core3 O-linked glycan GlcNAc(beta1,3)GalNAc structure. Can use glycolipid LC3Cer as an efficient acceptor. Gene: B3GALT5
Molecular Weight:	36 kDa
Gene ID:	10317
UniProt:	Q9Y2C3

Application Details

Application Notes:	WB 1:1000-3000, ELISA(peptide) 1:20000-1:40000
Restrictions:	For Research Use only

Handling

Format:	Liquid
Concentration:	1 mg/mL
Buffer:	Rabbit IgG in phosphate buffered saline , pH 7.4, 150 mM NaCl, 0.02 % sodium azide and 50 % glycerol.
Preservative:	Sodium azide
Precaution of Use:	This product contains Sodium azide: a POISONOUS AND HAZARDOUS SUBSTANCE which should be handled by trained staff only.
Storage:	-20 °C
Storage Comment:	Store at -20 °C. Stable for 12 months from date of receipt.
Expiry Date:	12 months



Western Blotting

Image 1. Western blot analysis of B3GALT5 using HT29 whole cell lysates