

Datasheet for ABIN6260225  
**anti-BCL3 antibody (C-Term)**[Go to Product page](#)

## 1 Image

## Overview

Quantity:	100 µL
Target:	BCL3
Binding Specificity:	C-Term
Reactivity:	Human, Mouse
Host:	Rabbit
Clonality:	Polyclonal
Conjugate:	This BCL3 antibody is un-conjugated
Application:	Western Blotting (WB), ELISA

## Product Details

Immunogen:	A synthesized peptide derived from human BCL-3, corresponding to a region within C-terminal amino acids.
Isotype:	IgG
Specificity:	BCL-3 Antibody detects endogenous levels of total BCL-3.
Predicted Reactivity:	Horse
Purification:	The antiserum was purified by peptide affinity chromatography using SulfoLink™ Coupling Resin (Thermo Fisher Scientific).

## Target Details

Target:	BCL3
---------	------

## Target Details

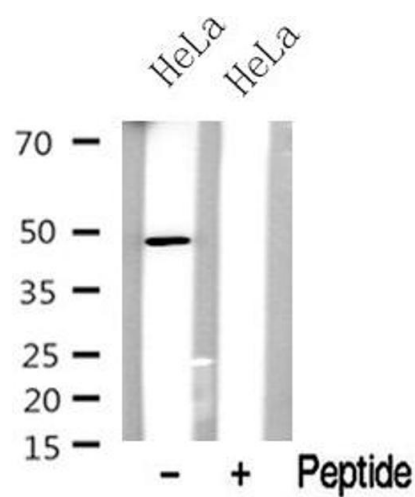
Alternative Name:	BCL3 ( <a href="#">BCL3 Products</a> )
Background:	<p>Description: Contributes to the regulation of transcriptional activation of NF-kappa-B target genes. In the cytoplasm, inhibits the nuclear translocation of the NF-kappa-B p50 subunit. In the nucleus, acts as transcriptional activator that promotes transcription of NF-kappa-B target genes. Contributes to the regulation of cell proliferation (By similarity).</p> <p>Gene: BCL3</p>
Molecular Weight:	47584
Gene ID:	602
UniProt:	<a href="#">P20749</a>
Pathways:	<a href="#">NF-kappaB Signaling</a> , <a href="#">Maintenance of Protein Location</a> , <a href="#">Protein targeting to Nucleus</a>

## Application Details

Application Notes:	WB 1:500-1:2000, ELISA(peptide) 1:20000-1:40000
Restrictions:	For Research Use only

## Handling

Format:	Liquid
Concentration:	1 mg/mL
Buffer:	Rabbit IgG in phosphate buffered saline , pH 7.4, 150 mM NaCl, 0.02 % sodium azide and 50 % glycerol.
Preservative:	Sodium azide
Precaution of Use:	This product contains Sodium azide: a POISONOUS AND HAZARDOUS SUBSTANCE which should be handled by trained staff only.
Storage:	-20 °C
Storage Comment:	Store at -20 °C. Stable for 12 months from date of receipt.
Expiry Date:	12 months



Western Blotting

**Image 1.** Western blot analysis of BCL-3 in lysates of HeLa?, using BCL-3 Antibody(ABIN6272791).