

Datasheet for ABIN6260254

anti-TUBB1 antibody**3** Images[Go to Product page](#)

Overview

Quantity:	100 µL
Target:	TUBB1
Reactivity:	Human, Mouse, Rat, Monkey, Dog, Cow
Host:	Rabbit
Clonality:	Polyclonal
Conjugate:	This TUBB1 antibody is un-conjugated
Application:	Western Blotting (WB), ELISA, Immunohistochemistry (IHC), Immunofluorescence (IF), Immunocytochemistry (ICC)

Product Details

Immunogen:	A synthesized peptide derived from human beta I Tubulin
Isotype:	IgG
Specificity:	Beta I Tubulin Antibody detects endogenous levels of total beta I Tubulin
Cross-Reactivity:	Cow (Bovine), Dog (Canine), Human, Monkey, Mouse (Murine), Rat (Rattus)
Purification:	The antiserum was purified by peptide affinity chromatography using SulfoLink™ Coupling Resin (Thermo Fisher Scientific).

Target Details

Target:	TUBB1
Alternative Name:	beta I Tubulin (TUBB1 Products)

Target Details

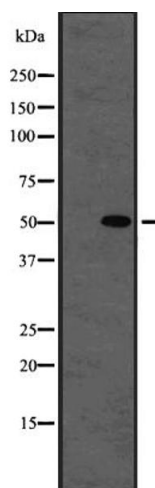
Background:	Description: Tubulin is the major constituent of microtubules. It binds two moles of GTP, one at an exchangeable site on the beta chain and one at a non-exchangeable site on the alpha chain (By similarity). Gene: TUBB1
Molecular Weight:	50kDa
Gene ID:	81027
UniProt:	Q9H4B7
Pathways:	Microtubule Dynamics

Application Details

Application Notes:	WB 1:1000-3000 IHC 1:200 ICC/IF
Restrictions:	For Research Use only

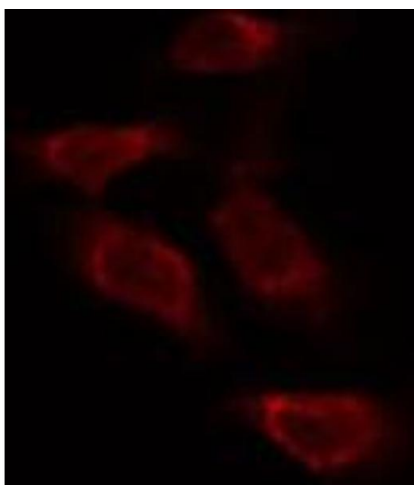
Handling

Format:	Liquid
Concentration:	1 mg/mL
Buffer:	Rabbit IgG in phosphate buffered saline , pH 7.4, 150 mM NaCl, 0.02 % sodium azide and 50 % glycerol.
Preservative:	Sodium azide
Precaution of Use:	This product contains Sodium azide: a POISONOUS AND HAZARDOUS SUBSTANCE which should be handled by trained staff only.
Storage:	-20 °C
Storage Comment:	Store at -20 °C.Stable for 12 months from date of receipt
Expiry Date:	12 months



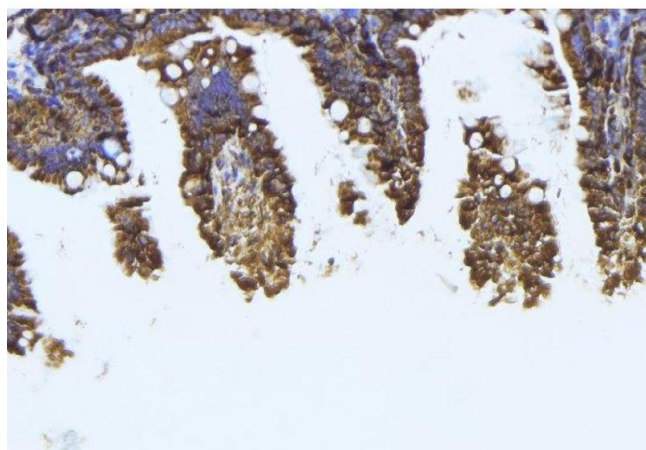
Western Blotting

Image 1. Western blot analysis of beta I Tubulin using K562 whole cell lysates



Immunofluorescence (fixed cells)

Image 2. ABIN6273994 staining Hela by IF/ICC. The sample were fixed with PFA and permeabilized in 0.1% Triton X-100, then blocked in 10% serum for 45 minutes at 25°C. The primary antibody was diluted at 1/200 and incubated with the sample for 1 hour at 37°C. An Alexa Fluor 594 conjugated goat anti-rabbit IgG (H+L) Ab, diluted at 1/600, was used as the secondary antibody.



Immunohistochemistry

Image 3. ABIN6273994 at 1/100 staining Mouse colon tissue by IHC-P. The sample was formaldehyde fixed and a heat mediated antigen retrieval step in citrate buffer was performed. The sample was then blocked and incubated with the antibody for 1.5 hours at 22°C. An HRP conjugated goat anti-rabbit antibody was used as the secondary