



[Go to Product page](#)

Datasheet for ABIN6260272

## anti-B-Cell Linker antibody (N-Term)

### 3 Images

#### Overview

Quantity:	100 µL
Target:	B-Cell Linker (BLNK)
Binding Specificity:	N-Term
Reactivity:	Human, Mouse
Host:	Rabbit
Clonality:	Polyclonal
Conjugate:	This B-Cell Linker antibody is un-conjugated
Application:	Western Blotting (WB), ELISA, Immunohistochemistry (IHC), Immunofluorescence (IF), Immunocytochemistry (ICC)

#### Product Details

Immunogen:	A synthesized peptide derived from human BLNK, corresponding to a region within N-terminal amino acids.
Isotype:	IgG
Specificity:	BLNK Antibody detects endogenous levels of total BLNK.
Predicted Reactivity:	Pig,Zebrafish,Bovine,Sheep,Rabbit,Chicken,Xenopus
Purification:	The antiserum was purified by peptide affinity chromatography using SulfoLink™ Coupling Resin (Thermo Fisher Scientific).

#### Target Details

Target:	B-Cell Linker (BLNK)
---------	----------------------

## Target Details

---

Alternative Name: [BLNK \(BLNK Products\)](#)

---

Background: Description: Functions as a central linker protein, downstream of the B-cell receptor (BCR), bridging the SYK kinase to a multitude of signaling pathways and regulating biological outcomes of B-cell function and development. Plays a role in the activation of ERK/EPHB2, MAP kinase p38 and JNK. Modulates AP1 activation. Important for the activation of NF-kappa-B and NFAT. Plays an important role in BCR-mediated PLCG1 and PLCG2 activation and Ca<sup>2+</sup> mobilization and is required for trafficking of the BCR to late endosomes. However, does not seem to be required for pre-BCR-mediated activation of MAP kinase and phosphatidylinositol 3 (PI3) kinase signaling. May be required for the RAC1-JNK pathway. Plays a critical role in orchestrating the pro-B cell to pre-B cell transition. May play an important role in BCR-induced B-cell apoptosis.

Gene: BLNK

---

Molecular Weight: 50kDa

---

Gene ID: 29760

---

UniProt: [Q8WV28](#)

---

Pathways: [BCR Signaling](#)

---

## Application Details

---

Application Notes: WB 1:500-1:2000, IHC 1:50-1:200, IF/ICC 1:100-1:500, ELISA(peptide) 1:20000-1:40000

---

Restrictions: For Research Use only

---

## Handling

---

Format: Liquid

---

Concentration: 1 mg/mL

---

Buffer: Rabbit IgG in phosphate buffered saline , pH 7.4, 150 mM NaCl, 0.02 % sodium azide and 50 % glycerol.

---

Preservative: Sodium azide

---

Precaution of Use: This product contains Sodium azide: a POISONOUS AND HAZARDOUS SUBSTANCE which should be handled by trained staff only.

---

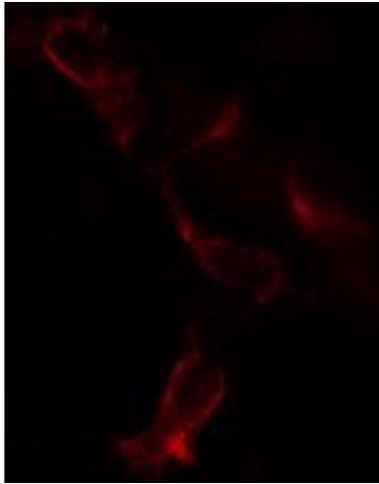
Storage: -20 °C

---

Storage Comment: Store at -20 °C. Stable for 12 months from date of receipt.

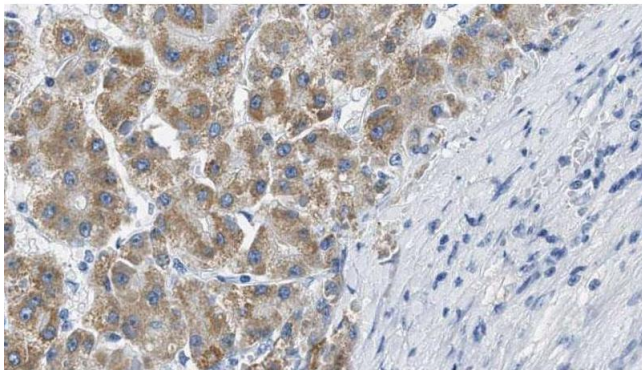
---

Images



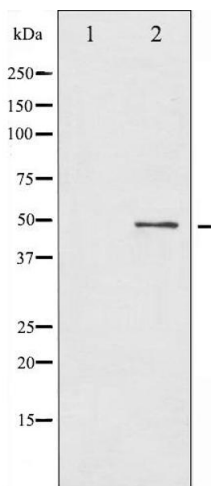
**Immunofluorescence (fixed cells)**

**Image 1.** ABIN6269382 staining COLO205 cells by IF/ICC. The sample were fixed with PFA and permeabilized in 0.1% Triton X-100,then blocked in 10% serum for 45 minutes at 25°C. The primary antibody was diluted at 1/200 and incubated with the sample for 1 hour at 37°C. An Alexa Fluor 594 conjugated goat anti-rabbit IgG (H+L) antibody(Cat.# S0006), diluted at 1/600, was used as secondary antibody.



**Immunohistochemistry**

**Image 2.** ABIN6269382 at 1/100 staining Human liver cancer tissue by IHC-P. The sample was formaldehyde fixed and a heat mediated antigen retrieval step in citrate buffer was performed. The sample was then blocked and incubated with the antibody for 1.5 hours at 22°C. An HRP conjugated goat anti-rabbit antibody was used as the secondary.



**Western Blotting**

**Image 3.** Western blot analysis of BLNK expression in etoposide treated 293 whole cell lysates,The lane on the left is treated with the antigen-specific peptide.