

Datasheet for ABIN6260282  
**anti-BMP3 antibody (Internal Region)**[Go to Product page](#)

## 7 Images

## Overview

Quantity:	100 µL
Target:	BMP3
Binding Specificity:	Internal Region
Reactivity:	Human, Rat, Mouse
Host:	Rabbit
Clonality:	Polyclonal
Conjugate:	This BMP3 antibody is un-conjugated
Application:	Western Blotting (WB), ELISA, Immunohistochemistry (IHC), Immunocytochemistry (ICC), Immunofluorescence (IF)

## Product Details

Immunogen:	A synthesized peptide derived from human BMP3, corresponding to a region within the internal amino acids.
Isotype:	IgG
Specificity:	BMP3 Antibody detects endogenous levels of total BMP3.
Predicted Reactivity:	Bovine, Sheep
Purification:	The antiserum was purified by peptide affinity chromatography using SulfoLink™ Coupling Resin (Thermo Fisher Scientific).

## Target Details

Target:	BMP3
---------	------

## Target Details

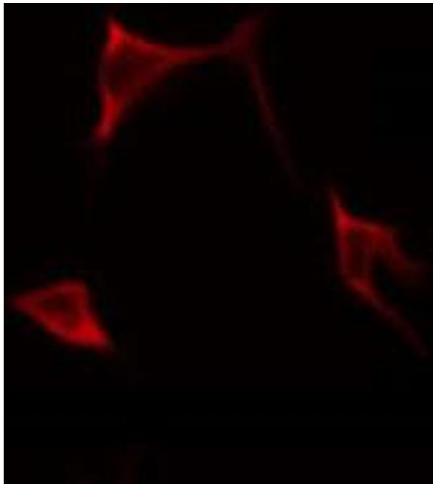
Alternative Name:	BMP3 ( <a href="#">BMP3 Products</a> )
Background:	Description: Negatively regulates bone density. Antagonizes the ability of certain osteogenic BMPs to induce osteoprogenitor differentiation and ossification. Gene: BMP3
Molecular Weight:	53 kDa
Gene ID:	651
UniProt:	<a href="#">P12645</a>

## Application Details

Application Notes:	WB 1:500-1:2000, IHC 1:50-1:200, IF/ICC 1:100-1:500, ELISA(peptide) 1:20000-1:40000
Restrictions:	For Research Use only

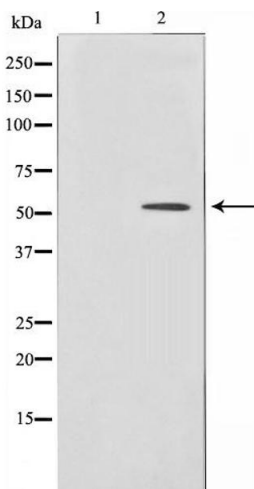
## Handling

Format:	Liquid
Concentration:	1 mg/mL
Buffer:	Rabbit IgG in phosphate buffered saline , pH 7.4, 150 mM NaCl, 0.02 % sodium azide and 50 % glycerol.
Preservative:	Sodium azide
Precaution of Use:	This product contains Sodium azide: a POISONOUS AND HAZARDOUS SUBSTANCE which should be handled by trained staff only.
Storage:	-20 °C
Storage Comment:	Store at -20 °C. Stable for 12 months from date of receipt.
Expiry Date:	12 months



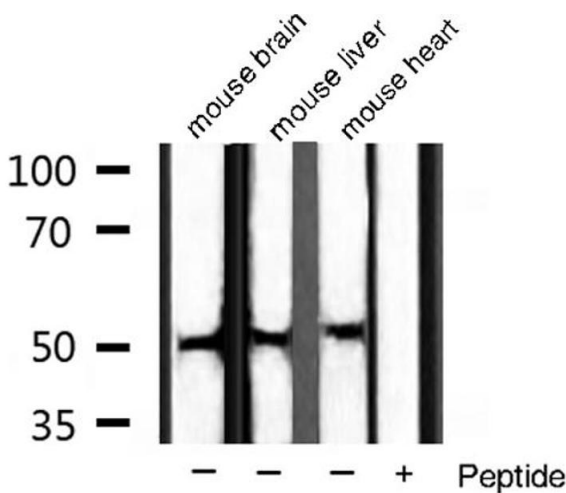
Immunofluorescence (fixed cells)

**Image 1.** ABIN6268699 staining HeLa by IF/ICC. The sample were fixed with PFA and permeabilized in 0.1% Triton X-100, then blocked in 10% serum for 45 minutes at 25°C. The primary antibody was diluted at 1/200 and incubated with the sample for 1 hour at 37°C. An Alexa Fluor 594 conjugated goat anti-rabbit IgG (H+L) Ab, diluted at 1/600, was used as the secondary antibody.



Western Blotting

**Image 2.** Western blot analysis of BMP3 expression in HeLa cells, The lane on the left is treated with the antigen-specific peptide.



Western Blotting

**Image 3.** Western blot analysis of extracts of various sample, using BMP3 antibody.

Please check the [product details page](#) for more images. Overall 7 images are available for ABIN6260282.