



[Go to Product page](#)

Datasheet for ABIN6260299

## anti-IBSP antibody (Internal Region)

### 1 Image

#### Overview

Quantity:	100 µL
Target:	IBSP
Binding Specificity:	Internal Region
Reactivity:	Human, Mouse, Rat
Host:	Rabbit
Clonality:	Polyclonal
Conjugate:	This IBSP antibody is un-conjugated
Application:	Western Blotting (WB), ELISA, Immunohistochemistry (IHC), Immunofluorescence (IF), Immunocytochemistry (ICC)

#### Product Details

Immunogen:	A synthesized peptide derived from human Bone Sialoprotein, corresponding to a region within the internal amino acids.
Isotype:	IgG
Specificity:	Bone Sialoprotein Antibody detects endogenous levels of total Bone Sialoprotein.
Purification:	The antiserum was purified by peptide affinity chromatography using SulfoLink™ Coupling Resin (Thermo Fisher Scientific).

#### Target Details

Target:	IBSP
Alternative Name:	IBSP ( <a href="#">IBSP Products</a> )

## Target Details

---

Background:	Description: Binds tightly to hydroxyapatite. Appears to form an integral part of the mineralized matrix. Probably important to cell-matrix interaction. Promotes Arg-Gly-Asp-dependent cell attachment. Gene: IBSP
Molecular Weight:	35 kDa.
Gene ID:	3381
UniProt:	<a href="#">P21815</a>

## Application Details

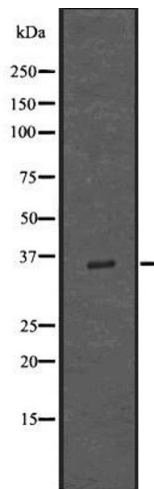
---

Application Notes:	WB 1:1000-3000, IF/ICC 1:100-1:500, IHC 1:50-1:200, ELISA(peptide) 1:20000-1:40000
Restrictions:	For Research Use only

## Handling

---

Format:	Liquid
Concentration:	1 mg/mL
Buffer:	Rabbit IgG in phosphate buffered saline , pH 7.4, 150 mM NaCl, 0.02 % sodium azide and 50 % glycerol.
Preservative:	Sodium azide
Precaution of Use:	This product contains Sodium azide: a POISONOUS AND HAZARDOUS SUBSTANCE which should be handled by trained staff only.
Storage:	-20 °C
Storage Comment:	Store at -20 °C. Stable for 12 months from date of receipt.
Expiry Date:	12 months



### Western Blotting

**Image 1.** Western blot analysis of Bone Sialoprotein using K562 whole lysates.