

Datasheet for ABIN6260302
anti-BRAP antibody (C-Term)[Go to Product page](#)

1 Image

Overview

Quantity:	100 µL
Target:	BRAP
Binding Specificity:	C-Term
Reactivity:	Human
Host:	Rabbit
Clonality:	Polyclonal
Conjugate:	This BRAP antibody is un-conjugated
Application:	Western Blotting (WB), ELISA, Immunofluorescence (IF), Immunocytochemistry (ICC)

Product Details

Immunogen:	A synthesized peptide derived from human BRAP, corresponding to a region within C-terminal amino acids.
Isotype:	IgG
Specificity:	BRAP Antibody detects endogenous levels of total BRAP.
Predicted Reactivity:	Pig,Bovine,Horse,Sheep,Dog,Xenopus
Purification:	The antiserum was purified by peptide affinity chromatography using SulfoLink™ Coupling Resin (Thermo Fisher Scientific).

Target Details

Target:	BRAP
---------	------

Target Details

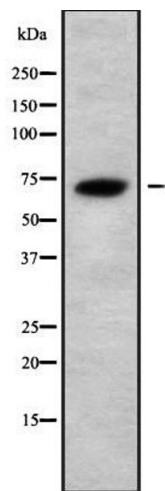
Alternative Name:	BRAP (BRAP Products)
Background:	<p>Description: Negatively regulates MAP kinase activation by limiting the formation of Raf/MEK complexes probably by inactivation of the KSR1 scaffold protein. Also acts as a Ras responsive E3 ubiquitin ligase that, on activation of Ras, is modified by auto-polyubiquitination resulting in the release of inhibition of Raf/MEK complex formation. May also act as a cytoplasmic retention protein with a role in regulating nuclear transport.</p> <p>Gene: BRAP</p>
Molecular Weight:	67 kDa
Gene ID:	8315
UniProt:	Q7Z569

Application Details

Application Notes:	WB 1:1000-3000, IF/ICC 1:100-1:500, ELISA(peptide) 1:20000-1:40000
Restrictions:	For Research Use only

Handling

Format:	Liquid
Concentration:	1 mg/mL
Buffer:	Rabbit IgG in phosphate buffered saline , pH 7.4, 150 mM NaCl, 0.02 % sodium azide and 50 % glycerol.
Preservative:	Sodium azide
Precaution of Use:	This product contains Sodium azide: a POISONOUS AND HAZARDOUS SUBSTANCE which should be handled by trained staff only.
Storage:	-20 °C
Storage Comment:	Store at -20 °C. Stable for 12 months from date of receipt.
Expiry Date:	12 months



Western Blotting

Image 1. Western blot analysis of BRAP using LOVO whole cell lysates