

Datasheet for ABIN6260314
anti-BRI3 antibody (N-Term)

2 Images

[Go to Product page](#)

Overview

Quantity:	100 µL
Target:	BRI3
Binding Specificity:	N-Term
Reactivity:	Human, Mouse, Rat
Host:	Rabbit
Clonality:	Polyclonal
Conjugate:	This BRI3 antibody is un-conjugated
Application:	Western Blotting (WB), ELISA, Immunohistochemistry (IHC)

Product Details

Immunogen:	A synthesized peptide derived from human BRI3, corresponding to a region within N-terminal amino acids.
Isotype:	IgG
Specificity:	BRI3 Antibody detects endogenous levels of total BRI3.
Predicted Reactivity:	Pig,Zebrafish,Bovine,Dog,Xenopus
Purification:	The antiserum was purified by peptide affinity chromatography using SulfoLink™ Coupling Resin (Thermo Fisher Scientific).

Target Details

Target:	BRI3
---------	------

Target Details

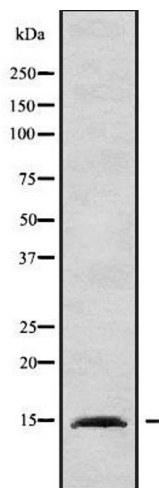
Alternative Name:	BRI3 (BRI3 Products)
Background:	Description: Participates in tumor necrosis factor-alpha (TNF)-induced cell death (PubMed:14592447). May be a target of Wnt/beta-catenin signaling in the liver (PubMed:20538055). Gene: BRI3
Molecular Weight:	14 kDa
Gene ID:	25798
UniProt:	O95415

Application Details

Application Notes:	WB 1:1000-3000, IHC 1:200, ELISA(peptide) 1:20000-1:40000
Restrictions:	For Research Use only

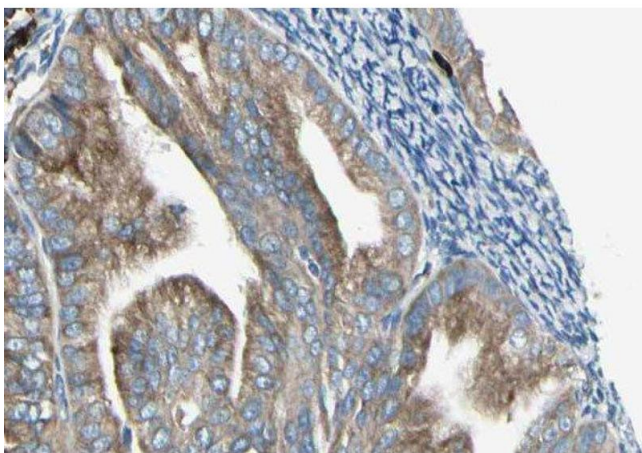
Handling

Format:	Liquid
Concentration:	1 mg/mL
Buffer:	Rabbit IgG in phosphate buffered saline , pH 7.4, 150 mM NaCl, 0.02 % sodium azide and 50 % glycerol.
Preservative:	Sodium azide
Precaution of Use:	This product contains Sodium azide: a POISONOUS AND HAZARDOUS SUBSTANCE which should be handled by trained staff only.
Storage:	-20 °C
Storage Comment:	Store at -20 °C. Stable for 12 months from date of receipt.
Expiry Date:	12 months



Western Blotting

Image 1. Western blot analysis of BRI3 using Jurkat whole cell lysates



Immunohistochemistry

Image 2. ABIN6279198 at 1/100 staining Human cervical cancer tissue by IHC-P. The sample was formaldehyde fixed and a heat mediated antigen retrieval step in citrate buffer was performed. The sample was then blocked and incubated with the antibody for 1.5 hours at 22°C. An HRP conjugated goat anti-rabbit antibody was used as the secondary