



[Go to Product page](#)

Datasheet for ABIN626035
anti-DHX9 antibody (AA 1-91)

2 Images

Overview

Quantity:	50 µg
Target:	DHX9
Binding Specificity:	AA 1-91
Reactivity:	Human
Host:	Mouse
Clonality:	Monoclonal
Application:	Western Blotting (WB), ELISA, Immunohistochemistry (IHC), Immunofluorescence (IF), Immunohistochemistry (Paraffin-embedded Sections) (IHC (p))

Product Details

Brand:	IHC-plus™
Immunogen:	DHX9 (NP_001348, 1 a.a. ~ 91 a.a) partial recombinant protein with GST tag. MW of the GST tag alone is 26 KDa. Type of Immunogen: Recombinant protein
Clone:	3G7
Isotype:	IgG1 kappa
Specificity:	Human DHX9
Purification:	Purified from ascites by Protein A

Target Details

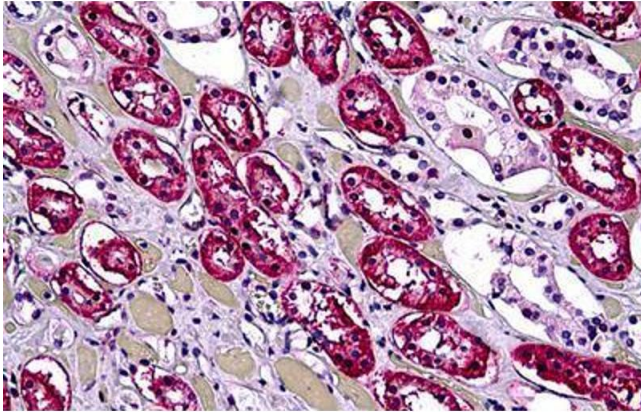
Target:	DHX9
Alternative Name:	DHX9 (DHX9 Products)
Background:	Name/Gene ID: DHX9 Synonyms: DHX9, ATP-dependent RNA helicase A, DDX9, DEAH box protein 9, NDH II, NDHII, LKP, NDH2, Nuclear DNA helicase II, RHA, Leukophysin
Gene ID:	1660
NCBI Accession:	NP_001348
UniProt:	Q08211

Application Details

Application Notes:	Approved: ELISA, IF (10 µg/mL), IHC, IHC-P (5 µg/mL), WB (1:500 - 1:1000) Usage: Immunohistochemistry: Formalin-fixed paraffin-embedded sections. Sandwich ELISA: Recombinant protein. Western Blot: Cell lysate, Recombinant protein.
Comment:	Target Species of Antibody: Human
Restrictions:	For Research Use only

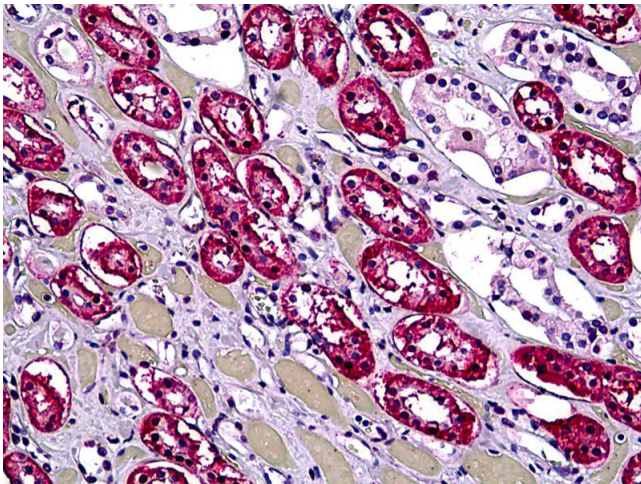
Handling

Format:	Liquid
Concentration:	Lot specific
Buffer:	PBS, pH 7.4
Handling Advice:	avoid freeze thaw cycles.
Storage:	4 °C, -20 °C
Storage Comment:	Short term 4°C, long term aliquot and store at -20°C, avoid freeze-thaw cycles.



Immunohistochemistry (Formalin-fixed Paraffin-embedded Sections)

Image 1. Human Kidney, Tubules: Formalin-Fixed, Paraffin-Embedded (FFPE)



Immunohistochemistry

Image 2. Anti-DHX9 antibody IHC of human kidney, tubules. Immunohistochemistry of formalin-fixed, paraffin-embedded tissue after heat-induced antigen retrieval. Antibody concentration 5 ug/ml.