

Datasheet for ABIN6260350  
**anti-CEBPE antibody (Internal Region)**

## 4 Images

[Go to Product page](#)

## Overview

Quantity:	100 µL
Target:	CEBPE
Binding Specificity:	Internal Region
Reactivity:	Human
Host:	Rabbit
Clonality:	Polyclonal
Conjugate:	This CEBPE antibody is un-conjugated
Application:	Western Blotting (WB), ELISA, Immunohistochemistry (IHC), Immunofluorescence (IF), Immunocytochemistry (ICC)

## Product Details

Immunogen:	A synthesized peptide derived from human C/EBP epsilon, corresponding to a region within the internal amino acids.
Isotype:	IgG
Specificity:	C/EBP epsilon Antibody detects endogenous levels of total C/EBP epsilon.
Predicted Reactivity:	Pig,Bovine,Horse,Sheep,Rabbit,Dog
Purification:	The antiserum was purified by peptide affinity chromatography using SulfoLink™ Coupling Resin (Thermo Fisher Scientific).

## Target Details

Target:	CEBPE
---------	-------

## Target Details

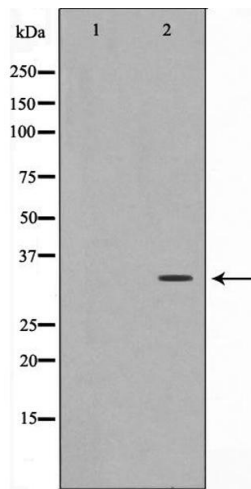
Alternative Name:	CEBPE ( <a href="#">CEBPE Products</a> )
Background:	<p>Description: Transcriptional activator (PubMed:26019275). C/EBP are DNA-binding proteins that recognize two different motifs: the CCAAT homology common to many promoters and the enhanced core homology common to many enhancers. Required for the promyelocyte-myelocyte transition in myeloid differentiation (PubMed:10359588).</p> <p>Gene: CEBPE</p>
Molecular Weight:	34kDa
Gene ID:	1053
UniProt:	<a href="#">Q15744</a>
Pathways:	<a href="#">Cellular Response to Molecule of Bacterial Origin</a>

## Application Details

Application Notes:	WB: 1:500-1:3000, IHC: 1:50-1:200, IF/ICC: 1:100-1:500, ELISA(peptide) 1:20000-1:40000
Restrictions:	For Research Use only

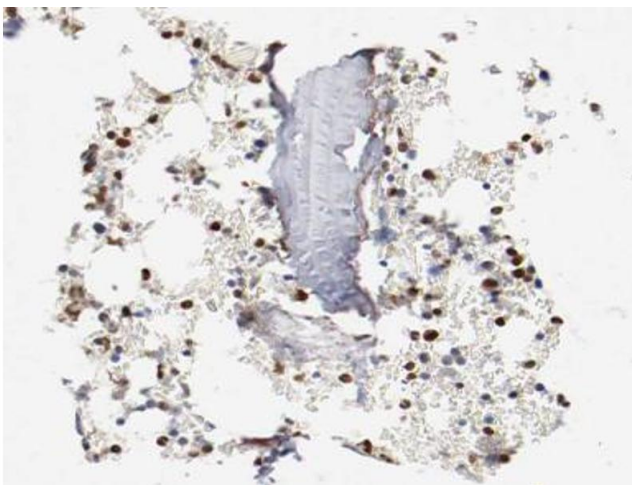
## Handling

Format:	Liquid
Concentration:	1 mg/mL
Buffer:	Rabbit IgG in phosphate buffered saline , pH 7.4, 150 mM NaCl, 0.02 % sodium azide and 50 % glycerol.
Preservative:	Sodium azide
Precaution of Use:	This product contains Sodium azide: a POISONOUS AND HAZARDOUS SUBSTANCE which should be handled by trained staff only.
Storage:	-20 °C
Storage Comment:	Store at -20 °C. Stable for 12 months from date of receipt.
Expiry Date:	12 months



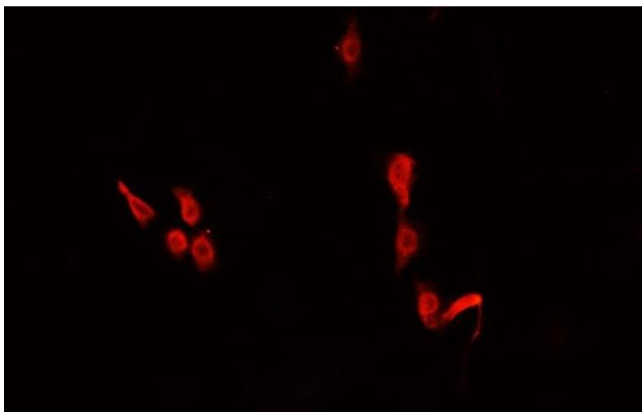
### Western Blotting

**Image 1.** Western blot analysis on HuvEc cell lysate using C/EBP-epsilon Antibody. The lane on the left is treated with the antigen-specific peptide.



### Immunohistochemistry

**Image 2.** ABIN6266478 at 1/200 staining human Bone marrow tissue sections by IHC-P. The tissue was formaldehyde fixed and a heat mediated antigen retrieval step in citrate buffer was performed. The tissue was then blocked and incubated with the antibody for 1.5 hours at 22°C. An HRP conjugated goat anti-rabbit antibody was used as the secondary.



### Immunofluorescence (fixed cells)

**Image 3.** ABIN6266478 staining U-2 OS cells by IF/ICC. The sample were fixed with PFA and permeabilized in 0.1% Triton X-100, then blocked in 10% serum for 45 minutes at 25°C. The primary antibody was diluted at 1/200 and incubated with the sample for 1 hour at 37°C. An Alexa Fluor 594 conjugated goat anti-rabbit IgG (H+L) antibody (Cat.# S0006), diluted at 1/600, was used as secondary antibody.

Please check the [product details page](#) for more images. Overall 4 images are available for ABIN6260350.