



Datasheet for ABIN6260368
anti-C1QTNF8 antibody



[Go to Product page](#)

2 Images

Overview

Quantity:	100 µL
Target:	C1QTNF8
Reactivity:	Human, Mouse
Host:	Rabbit
Clonality:	Polyclonal
Conjugate:	This C1QTNF8 antibody is un-conjugated
Application:	ELISA, Western Blotting (WB), Immunohistochemistry (IHC)

Product Details

Immunogen:	A synthesized peptide derived from human C1QTNF8
Isotype:	IgG
Specificity:	C1QTNF8 Antibody detects endogenous levels of total C1QTNF8
Cross-Reactivity:	Human, Mouse (Murine)
Purification:	The antiserum was purified by peptide affinity chromatography using SulfoLink™ Coupling Resin (Thermo Fisher Scientific).

Target Details

Target:	C1QTNF8
Alternative Name:	C1QTNF8 (C1QTNF8 Products)
Background:	Gene: C1QTNF8

Target Details

Molecular Weight:	28 kDa
Gene ID:	390664
UniProt:	P60827

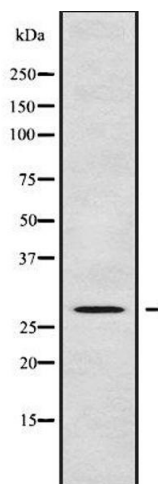
Application Details

Application Notes:	WB 1:1000-3000 IHC 1:200
Restrictions:	For Research Use only

Handling

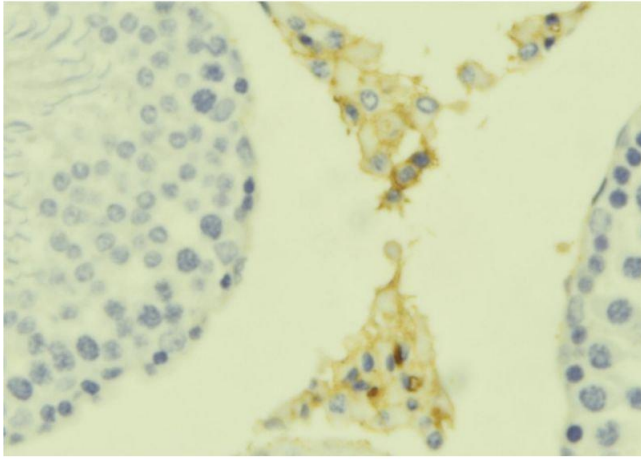
Format:	Liquid
Concentration:	1 mg/mL
Buffer:	Rabbit IgG in phosphate buffered saline , pH 7.4, 150 mM NaCl, 0.02 % sodium azide and 50 % glycerol.
Preservative:	Sodium azide
Precaution of Use:	This product contains Sodium azide: a POISONOUS AND HAZARDOUS SUBSTANCE which should be handled by trained staff only.
Storage:	-20 °C
Storage Comment:	Store at -20 °C.Stable for 12 months from date of receipt
Expiry Date:	12 months

Images



Western Blotting

Image 1. Western blot analysis of C1QTNF8 using LOVO whole cell lysates



Immunohistochemistry

Image 2. ABIN6279319 at 1/100 staining Mouse testis tissue by IHC-P. The sample was formaldehyde fixed and a heat mediated antigen retrieval step in citrate buffer was performed. The sample was then blocked and incubated with the antibody for 1.5 hours at 22;ãC. An HRP conjugated goat anti-rabbit antibody was used as the secondary