

Datasheet for ABIN6260382  
**anti-CA7 antibody (C-Term)**

## 2 Images

[Go to Product page](#)

## Overview

Quantity:	100 µL
Target:	CA7
Binding Specificity:	C-Term
Reactivity:	Mouse, Human, Rat
Host:	Rabbit
Clonality:	Polyclonal
Conjugate:	This CA7 antibody is un-conjugated
Application:	Western Blotting (WB), Immunohistochemistry (IHC), ELISA, Immunocytochemistry (ICC), Immunofluorescence (IF)

## Product Details

Immunogen:	A synthesized peptide derived from human CA7, corresponding to a region within C-terminal amino acids.
Isotype:	IgG
Specificity:	CA7 Antibody detects endogenous levels of total CA7.
Predicted Reactivity:	Pig,Bovine,Horse,Sheep,Rabbit,Dog
Purification:	The antiserum was purified by peptide affinity chromatography using SulfoLink™ Coupling Resin (Thermo Fisher Scientific).

## Target Details

Target:	CA7
---------	-----

## Target Details

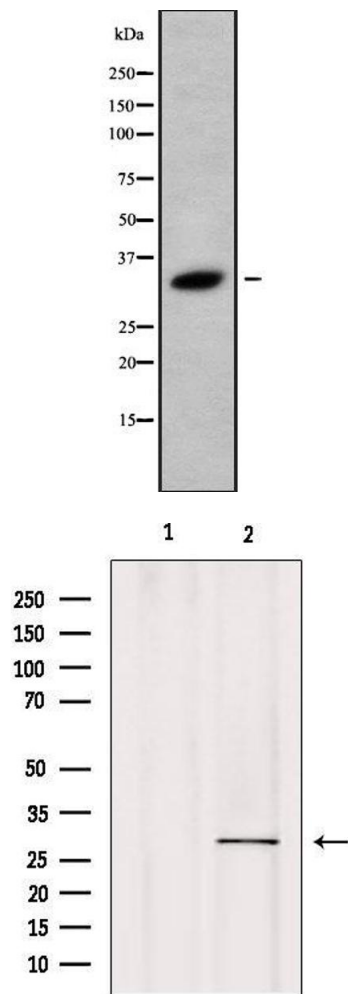
Alternative Name:	CA7 ( <a href="#">CA7 Products</a> )
Background:	Description: Reversible hydration of carbon dioxide. Gene: CA7
Molecular Weight:	30kDa
Gene ID:	766
UniProt:	<a href="#">P43166</a>

## Application Details

Application Notes:	WB 1:1000-3000, IF/ICC 1:100-1:500, IHC 1:50-1:200, ELISA(peptide) 1:20000-1:40000
Restrictions:	For Research Use only

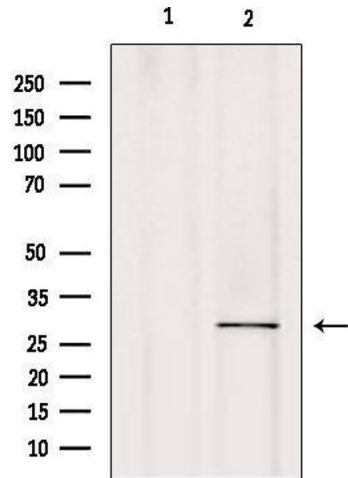
## Handling

Format:	Liquid
Concentration:	1 mg/mL
Buffer:	Rabbit IgG in phosphate buffered saline , pH 7.4, 150 mM NaCl, 0.02 % sodium azide and 50 % glycerol.
Preservative:	Sodium azide
Precaution of Use:	This product contains Sodium azide: a POISONOUS AND HAZARDOUS SUBSTANCE which should be handled by trained staff only.
Storage:	-20 °C
Storage Comment:	Store at -20 °C. Stable for 12 months from date of receipt.
Expiry Date:	12 months



#### Western Blotting

**Image 1.** Western blot analysis of CA7 using HepG2 whole cell lysates



#### Western Blotting

**Image 2.** Western blot analysis of extracts from mouse brain, using CA7 Antibody. Lane 1 was treated with the blocking peptide.