



[Go to Product page](#)

Datasheet for ABIN6260389

anti-CABP2 antibody (Internal Region)

1 Image

Overview

Quantity:	100 µL
Target:	CABP2
Binding Specificity:	Internal Region
Reactivity:	Human, Mouse
Host:	Rabbit
Clonality:	Polyclonal
Conjugate:	This CABP2 antibody is un-conjugated
Application:	Western Blotting (WB), ELISA

Product Details

Immunogen:	A synthesized peptide derived from human CABP2, corresponding to a region within the internal amino acids.
Isotype:	IgG
Specificity:	CABP2 Antibody detects endogenous levels of total CABP2.
Predicted Reactivity:	Pig,Bovine,Horse,Sheep,Dog
Purification:	The antiserum was purified by peptide affinity chromatography using SulfoLink™ Coupling Resin (Thermo Fisher Scientific).

Target Details

Target:	CABP2
---------	-------

Target Details

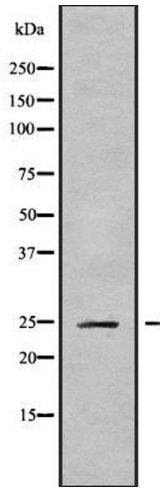
Alternative Name:	CABP2 (CABP2 Products)
Background:	Description: Required for sound encoding at inner hair cells (IHCs) synapses, likely via inhibition of the inactivation of voltage-gated calcium channel of type 1.3 (Cav1.3) in the IHCs (PubMed:28183797). Required for the normal transfer of light signals through the retina (By similarity). Gene: CABP2
Molecular Weight:	24 kDa
Gene ID:	51475
UniProt:	Q9NPB3

Application Details

Application Notes:	WB 1:1000-3000, ELISA(peptide) 1:20000-1:40000
Restrictions:	For Research Use only

Handling

Format:	Liquid
Concentration:	1 mg/mL
Buffer:	Rabbit IgG in phosphate buffered saline , pH 7.4, 150 mM NaCl, 0.02 % sodium azide and 50 % glycerol.
Preservative:	Sodium azide
Precaution of Use:	This product contains Sodium azide: a POISONOUS AND HAZARDOUS SUBSTANCE which should be handled by trained staff only.
Storage:	-20 °C
Storage Comment:	Store at -20 °C. Stable for 12 months from date of receipt.
Expiry Date:	12 months



Western Blotting

Image 1. Western blot analysis of CABP2 using MCF7 whole cell lysates