

Datasheet for ABIN6260407
anti-CASR antibody (C-Term)

3 Images

[Go to Product page](#)

Overview

| | |
|----------------------|--|
| Quantity: | 100 µL |
| Target: | CASR |
| Binding Specificity: | C-Term |
| Reactivity: | Human, Mouse, Rat |
| Host: | Rabbit |
| Clonality: | Polyclonal |
| Conjugate: | This CASR antibody is un-conjugated |
| Application: | Western Blotting (WB), ELISA, Immunohistochemistry (IHC), Immunofluorescence (IF), Immunocytochemistry (ICC) |

Product Details

| | |
|-----------------------|---|
| Immunogen: | A synthesized peptide derived from human Calcium Sensing Receptor, corresponding to a region within C-terminal amino acids. |
| Isotype: | IgG |
| Specificity: | Calcium Sensing Receptor Antibody detects endogenous levels of total Calcium Sensing Receptor. |
| Predicted Reactivity: | Pig,Bovine,Horse,Sheep,Rabbit,Dog,Chicken |
| Purification: | The antiserum was purified by peptide affinity chromatography using SulfoLink™ Coupling Resin (Thermo Fisher Scientific). |

Target Details

| | |
|-------------------|---|
| Target: | CASR |
| Alternative Name: | CASR (CASR Products) |
| Background: | <p>Description: G-protein-coupled receptor that senses changes in the extracellular concentration of calcium ions and plays a key role in maintaining calcium homeostasis (PubMed:7759551, PubMed:8702647, PubMed:8636323, PubMed:8878438, PubMed:17555508, PubMed:19789209, PubMed:21566075, PubMed:22114145, PubMed:23966241, PubMed:25292184, PubMed:25104082, PubMed:26386835, PubMed:25766501, PubMed:22789683). Senses fluctuations in the circulating calcium concentration and modulates the production of parathyroid hormone (PTH) in parathyroid glands (By similarity). The activity of this receptor is mediated by a G-protein that activates a phosphatidylinositol-calcium second messenger system (PubMed:7759551). The G-protein-coupled receptor activity is activated by a co-agonist mechanism: aromatic amino acids, such as Trp or Phe, act concertedly with divalent cations, such as calcium or magnesium, to achieve full receptor activation (PubMed:27434672, PubMed:27386547).</p> <p>Gene: CASR</p> |
| Molecular Weight: | 140kDa |
| Gene ID: | 846 |
| UniProt: | P41180 |
| Pathways: | Positive Regulation of Peptide Hormone Secretion , Carbohydrate Homeostasis |

Application Details

| | |
|--------------------|---|
| Application Notes: | WB 1:500-1:2000, IHC 1:50-1:200, IF/ICC 1:100-1:500, ELISA(peptide) 1:20000-1:40000 |
| Restrictions: | For Research Use only |

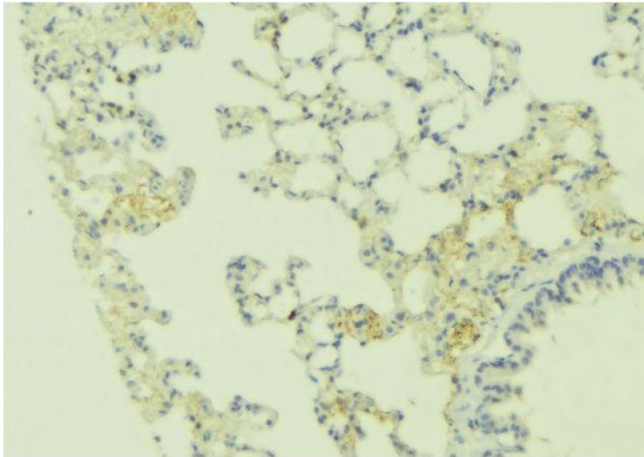
Handling

| | |
|--------------------|---|
| Format: | Liquid |
| Concentration: | 1 mg/mL |
| Buffer: | Rabbit IgG in phosphate buffered saline , pH 7.4, 150 mM NaCl, 0.02 % sodium azide and 50 % glycerol. |
| Preservative: | Sodium azide |
| Precaution of Use: | This product contains Sodium azide: a POISONOUS AND HAZARDOUS SUBSTANCE which |

Handling

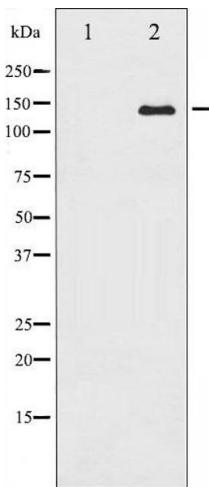
| | |
|------------------|---|
| | should be handled by trained staff only. |
| Storage: | -20 °C |
| Storage Comment: | Store at -20 °C. Stable for 12 months from date of receipt. |
| Expiry Date: | 12 months |

Images



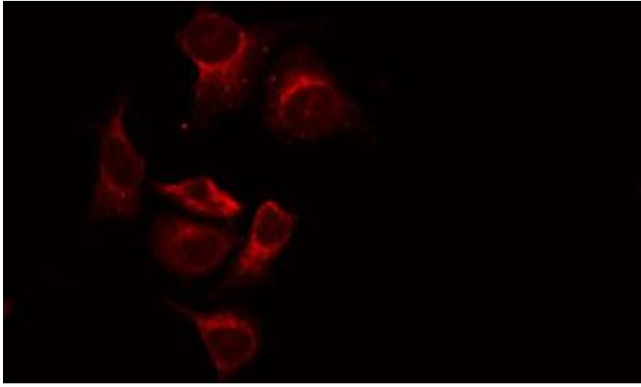
Immunohistochemistry

Image 1. ABIN6269242 at 1/100 staining Human lung tissue by IHC-P. The sample was formaldehyde fixed and a heat mediated antigen retrieval step in citrate buffer was performed. The sample was then blocked and incubated with the antibody for 1.5 hours at 22°C. An HRP conjugated goat anti-rabbit antibody was used as the secondary.



Western Blotting

Image 2. Western blot analysis of Calcium Sensing Receptor expression in LOVO whole cell lysates, The lane on the left is treated with the antigen-specific peptide.



Immunofluorescence (fixed cells)

Image 3. ABIN6269242 staining LOVO by IF/ICC. The sample were fixed with PFA and permeabilized in 0.1% Triton X-100, then blocked in 10% serum for 45 minutes at 25°C. The primary antibody was diluted at 1/200 and incubated with the sample for 1 hour at 37°C. An Alexa Fluor 594 conjugated goat anti-rabbit IgG (H+L) Ab, diluted at 1/600, was used as the secondary antibody.