

Datasheet for ABIN6260408  
**anti-CALCOCO2 antibody (Internal Region)**[Go to Product page](#)

## 3 Images

## Overview

Quantity:	100 µL
Target:	CALCOCO2
Binding Specificity:	Internal Region
Reactivity:	Human, Mouse, Rat
Host:	Rabbit
Clonality:	Polyclonal
Conjugate:	This CALCOCO2 antibody is un-conjugated
Application:	Western Blotting (WB), Immunofluorescence (IF), Immunohistochemistry (IHC), Immunocytochemistry (ICC)

## Product Details

Immunogen:	A synthesized peptide derived from human CALCOCO2, corresponding to a region within the internal amino acids.
Isotype:	IgG
Specificity:	CALCOCO2 Antibody detects endogenous levels of total CALCOCO2.
Purification:	The antiserum was purified by peptide affinity chromatography using SulfoLink™ Coupling Resin (Thermo Fisher Scientific).

## Target Details

Target:	CALCOCO2
Alternative Name:	CALCOCO2 ( <a href="#">CALCOCO2 Products</a> )

## Target Details

Background:	<p>Description: Xenophagy-specific receptor required for autophagy-mediated intracellular bacteria degradation. Acts as an effector protein of galectin-sensed membrane damage that restricts the proliferation of infecting pathogens such as Salmonella typhimurium upon entry into the cytosol by targeting LGALS8-associated bacteria for autophagy (PubMed:22246324). Initially orchestrates bacteria targeting to autophagosomes and subsequently ensures pathogen degradation by regulating pathogen-containing autophagosome maturation (PubMed:23022382, PubMed:25771791). Bacteria targeting to autophagosomes relies on its interaction with MAP1LC3A, MAP1LC3B and/or GABARAPL2, whereas regulation of pathogen-containing autophagosome maturation requires the interaction with MAP3LC3C (PubMed:23022382, PubMed:25771791). May play a role in ruffle formation and actin cytoskeleton organization and seems to negatively regulate constitutive secretion (PubMed:17635994).</p> <p>Gene: CALCOCO2</p>
-------------	---

Molecular Weight:	52 kDa
-------------------	--------

Gene ID:	10241
----------	-------

UniProt:	<a href="#">Q13137</a>
----------	------------------------

## Application Details

Application Notes:	WB 1:500-1:2000, IHC 1:50-1:200, IF/ICC 1:100-1:500
--------------------	---

Restrictions:	For Research Use only
---------------	-----------------------

## Handling

Format:	Liquid
---------	--------

Concentration:	1 mg/mL
----------------	---------

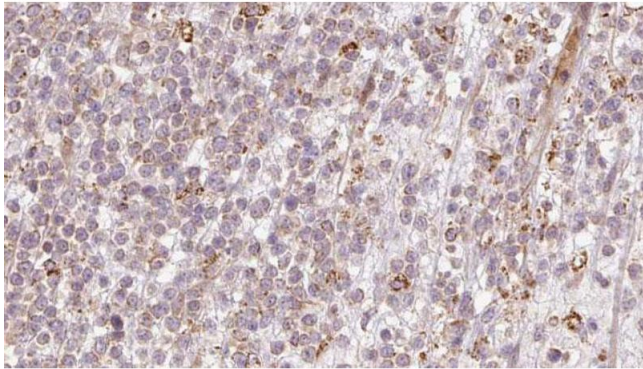
Buffer:	Rabbit IgG in phosphate buffered saline , pH 7.4, 150 mM NaCl, 0.02 % sodium azide and 50 % glycerol.
---------	---

Preservative:	Sodium azide
---------------	--------------

Precaution of Use:	This product contains Sodium azide: a POISONOUS AND HAZARDOUS SUBSTANCE which should be handled by trained staff only.
--------------------	--

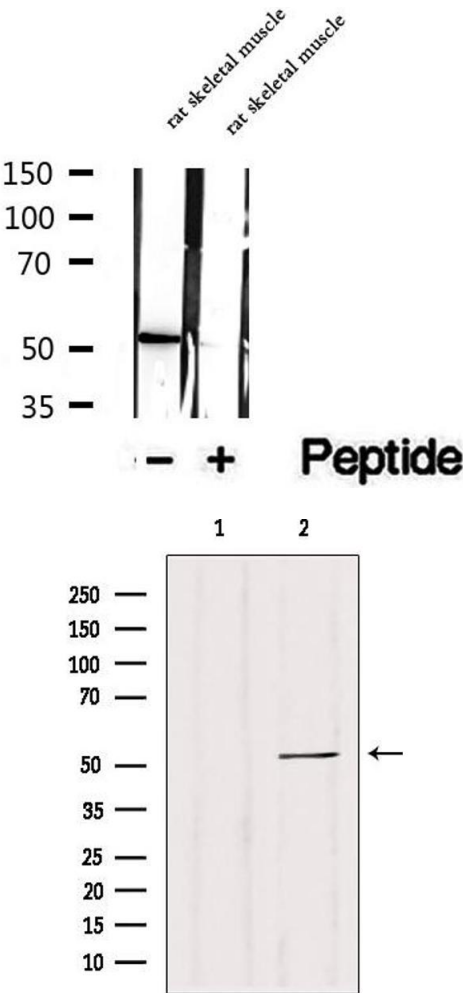
Storage:	-20 °C
----------	--------

Storage Comment:	Store at -20 °C. Stable for 12 months from date of receipt.
------------------	---



Immunohistochemistry

**Image 1.** ABIN6273204 at 1/100 staining Human lymph cancer tissue by IHC-P. The sample was formaldehyde fixed and a heat mediated antigen retrieval step in citrate buffer was performed. The sample was then blocked and incubated with the antibody for 1.5 hours at 22°C. An HRP conjugated goat anti-rabbit antibody was used as the secondary.



Western Blotting

**Image 2.** Western blot analysis of extracts of rat skeletal muscle tissue, using CALCOCO2 antibody.

Western Blotting

**Image 3.** Western blot analysis of extracts from 293, using CALCOCO2 antibody. Lane 1 was treated with the blocking peptide.